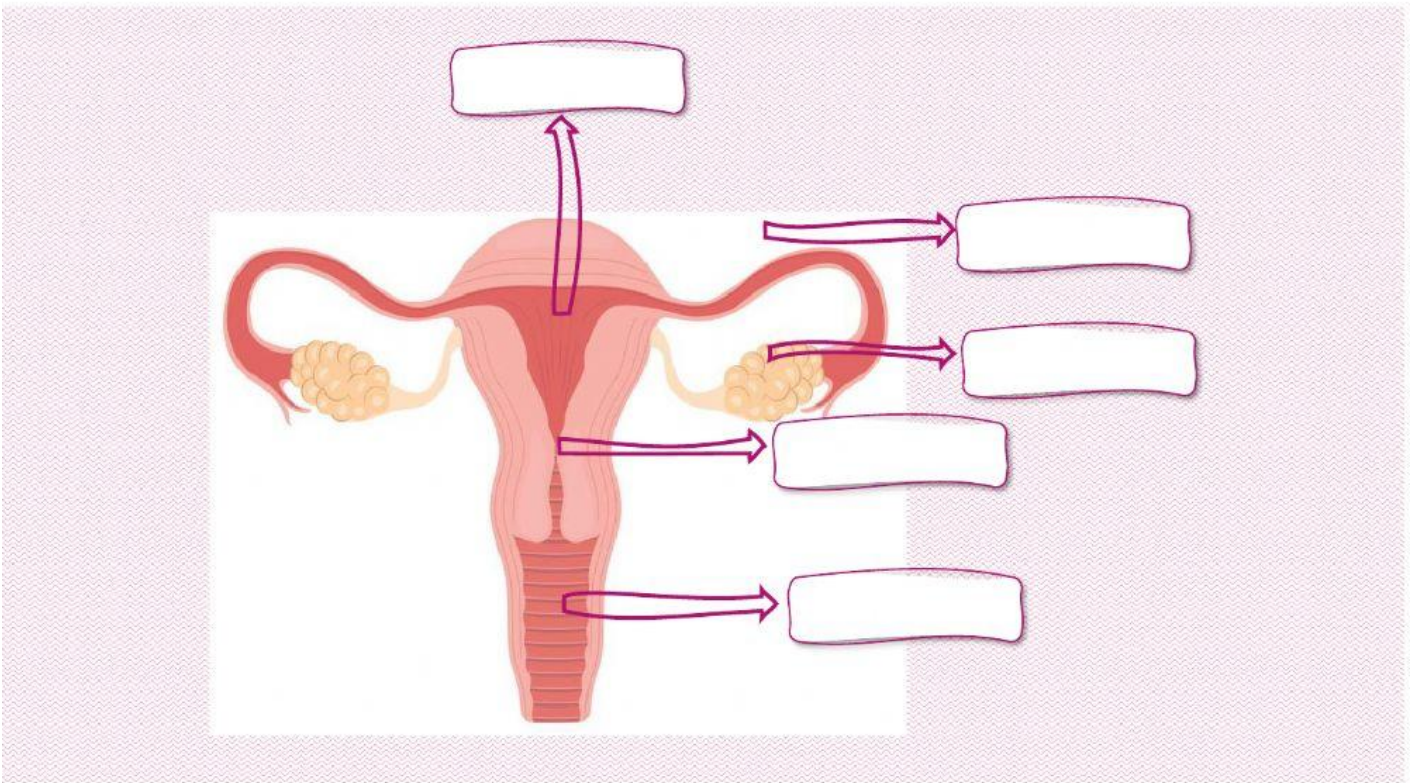




# Female Reproductive System

1. Label the parts of the female reproductive system in the picture.



2. Match the parts of the female reproductive system with its functions.

Ovaries

Uterus

Fallopian tubes

Vagina

Vulva

a pair of tubes running from the ovary to the uterus, through which an egg cell travels.

the outer folds that surround the openings of the vagina and the opening from the bladder called the urethra.

two organs on either side of the lower abdomen that release an egg cell monthly.

an organ, also called the womb, where the fertilized egg cell implants and grows into the unborn baby.

a muscular tube that receives the penis during sex, through which sperm travel on their way to fertilize the egg,