



LITERATURE TEST

7TH GRADE – IV PARTIAL



Student name: _____

Teacher's Name: Mrs Ayala Score: _____

School Year: 2020-2021 Points: **35%**

Topics: When it rained buffaloes, buffalo dance, Antelope, Jed Smith and Daniel Boone.

Date: _____

Teacher Comment:

PART I. MATCHING TYPE

5 points (1 pts. each)

Instruction: Read carefully the following statements and match with the correct character.

- | | |
|---|-----------------------------------|
| 1. Young man that sang in the storm | A. Judy O'Bryan |
| 2. "Shelter from the Storm" was written by | B. Christian Journey to the Cross |
| 3. John Bunyan is a character from the story | C. Worldly Wiseman |
| 4. Is a character from the story "Christian Journey to the Cross" | D. Martin Luther |
| 5. Ed McCully is a character from the story | E. Through Gates of Splendor |

PART II. SHORT ANSWER

5 points (1 pt. each)

Instruction: Read each question carefully and write the correct answer for each one.

1. Where did Martin Luther's Father work?

2. What did the Cottas give Luther so that he could finish school?

3. What did the Cottas want Luther to be?

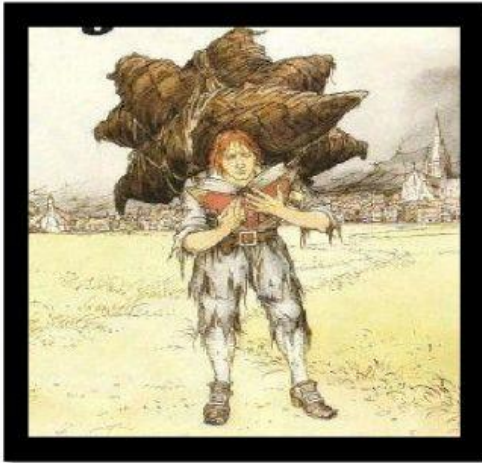
4. Into which language did Luther translate the Bible?

5. What did the load on Christian's back represent?

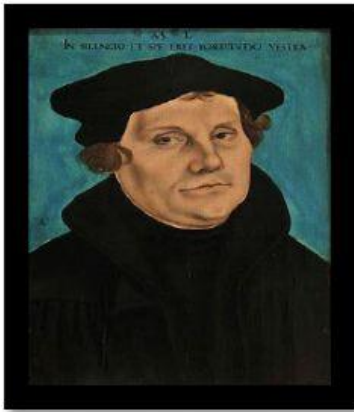
PART III. MULTIPLE CHOICE

5 points (1.66 pts. each)

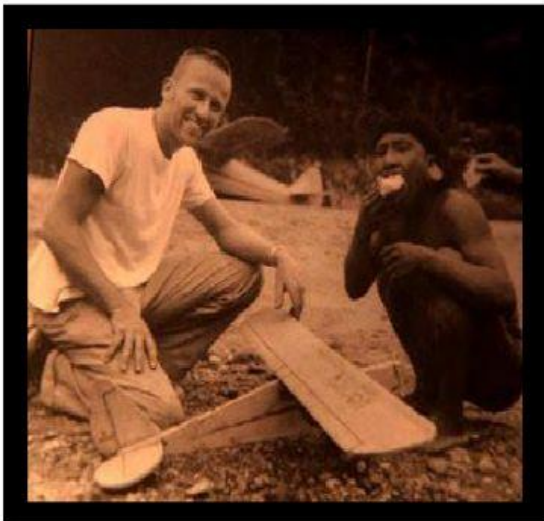
Instruction: Watch carefully each picture and select the correct title of each one.



- a. Shelter from the Storm
- b. Christian Journey to the Cross
- c. Through Gates of Splendor



- a. Shelter from the Storm
- b. Through Gates of Splendor
- c. Christian Journey to the Cross



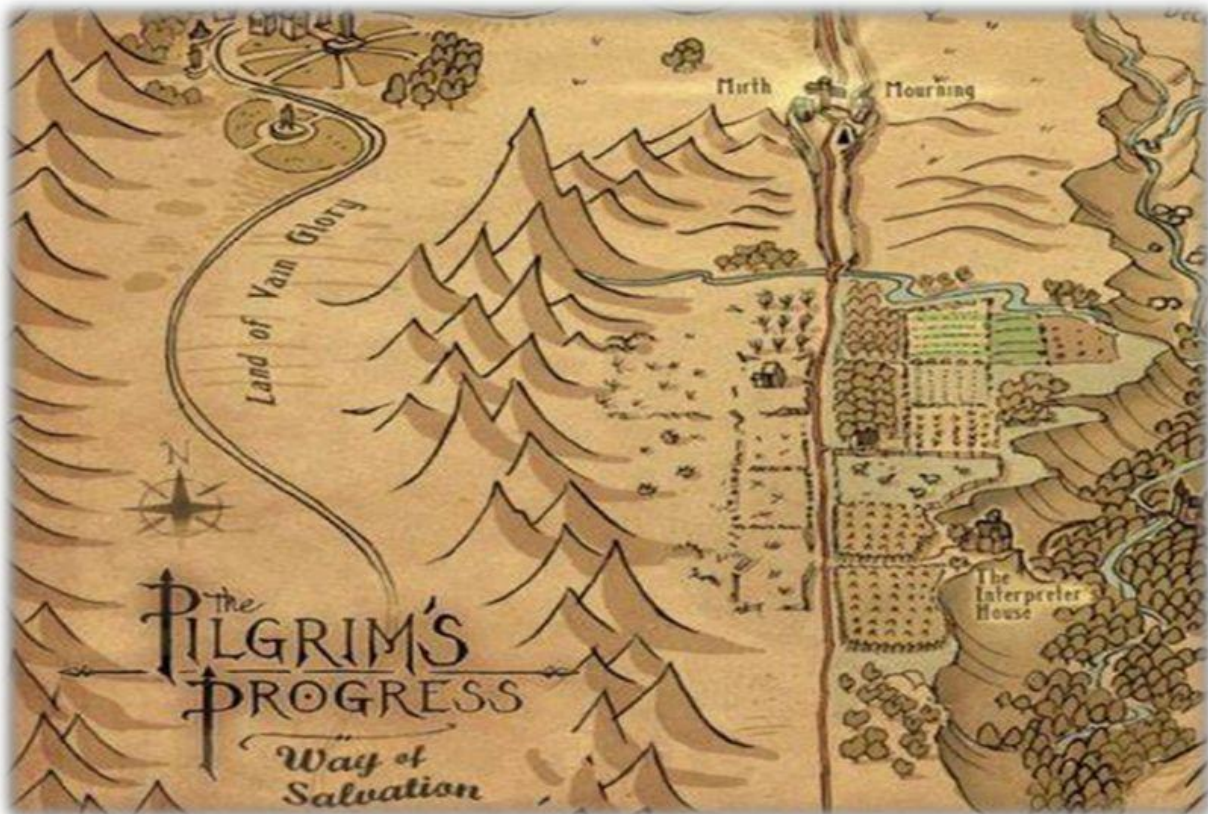
- d. Shelter from the Storm
- e. Through Gates of Splendor
- f. Christian Journey to the Cross

PART IV MULTIPLE CHOICE

5 points (1 pts. each)

Instruction: Read CAREFULLY and write the definition of each part of a drama.

1. "I come from the city of Destruction with a load of sins on my back; but I am on my way to Mount Zion, That I may be free from the Wrath to come... Is part of the story?
a. Christian's Journey to the Cross-b. CHOICE c. Neosho d. Jed Smith
2. Pete and Olivia are characters from the story....
a. Through gates of Splendor b. beaded moccasins c. Shelter from the Storm d. feathered headdress
3. "Alum rime" Daruma answered in WaoTededo. Is part of the story?
a. Buffalo Dance b. Through the Gates of Splendor c. hunter d. warrior
4. Luther spent the rest of his life preaching, teaching and writing, he translated the Bible into his native German tongue. Is part of the story?
a. A Shelter from the Storm b. Cap Garland c. The Father of English hymnology d. Royal
5. "Elisabeth Elliot" is the author of:
a. Daniel Boone b. Through Gates of Splendor c. Antelope! d. A Shelter from the Storm



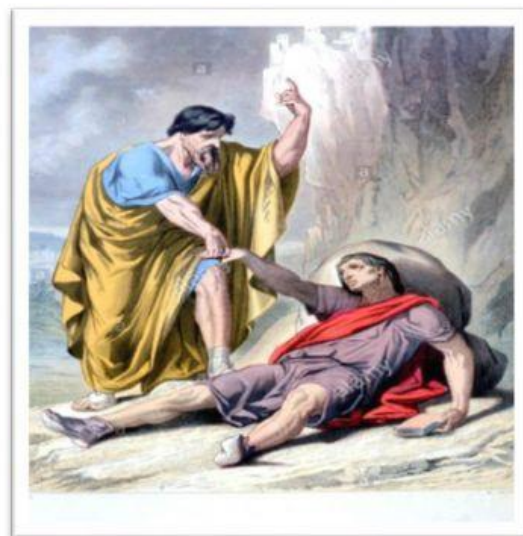
PART V. PRACTICE TYPE

5 points (2.5 pt. each)

Instruction: Read carefully the pictures and fill it with the parts of the story that completes the best the story map.

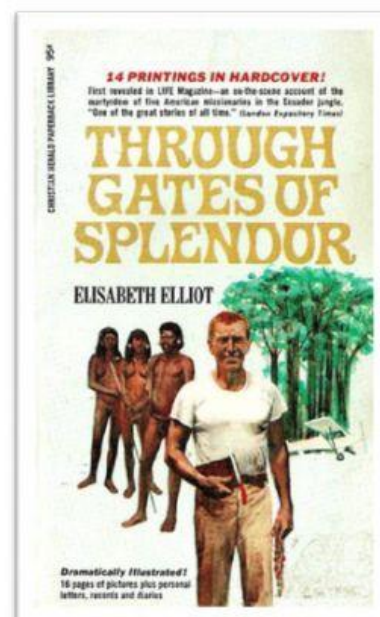
Christian Journey to the Cross

Setting	Characters	
Beginning	Middle	End



Through Gates of Splendor

Setting	Characters	
Beginning	Middle	End



Shelter from the Storm

Setting

--

Characters

--

Beginning

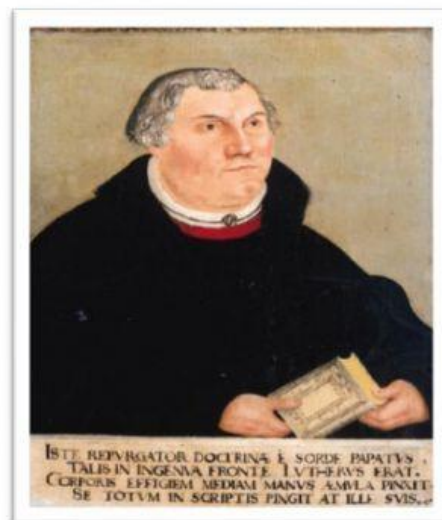
--

Middle

--

End

--



PART VI. PRACTICE TYPE

5 points (2.5 pt. each)

Instruction: In each square predict a different end for the titles that are in bold. (with five lines or more.)

Shelter from the Storm

--

Though Gates of Splendor

--



Act as if what you do makes a difference.



IT DOES.

Ms. Jocabed Ayala