

Hello!

Welcome to Opportunities for Serendipity English Course!



**Would you like to go cycling on
the North Yungas Road?**

.....

The most dangerous road

1 VOCABULARY; places and buildings

a Complete these famous tourist sights with a word from the list. Do you know what countries / cities they are in?

Bridge Castle Mountains Square Street

1 Trafalgar

2 The Golden Gate

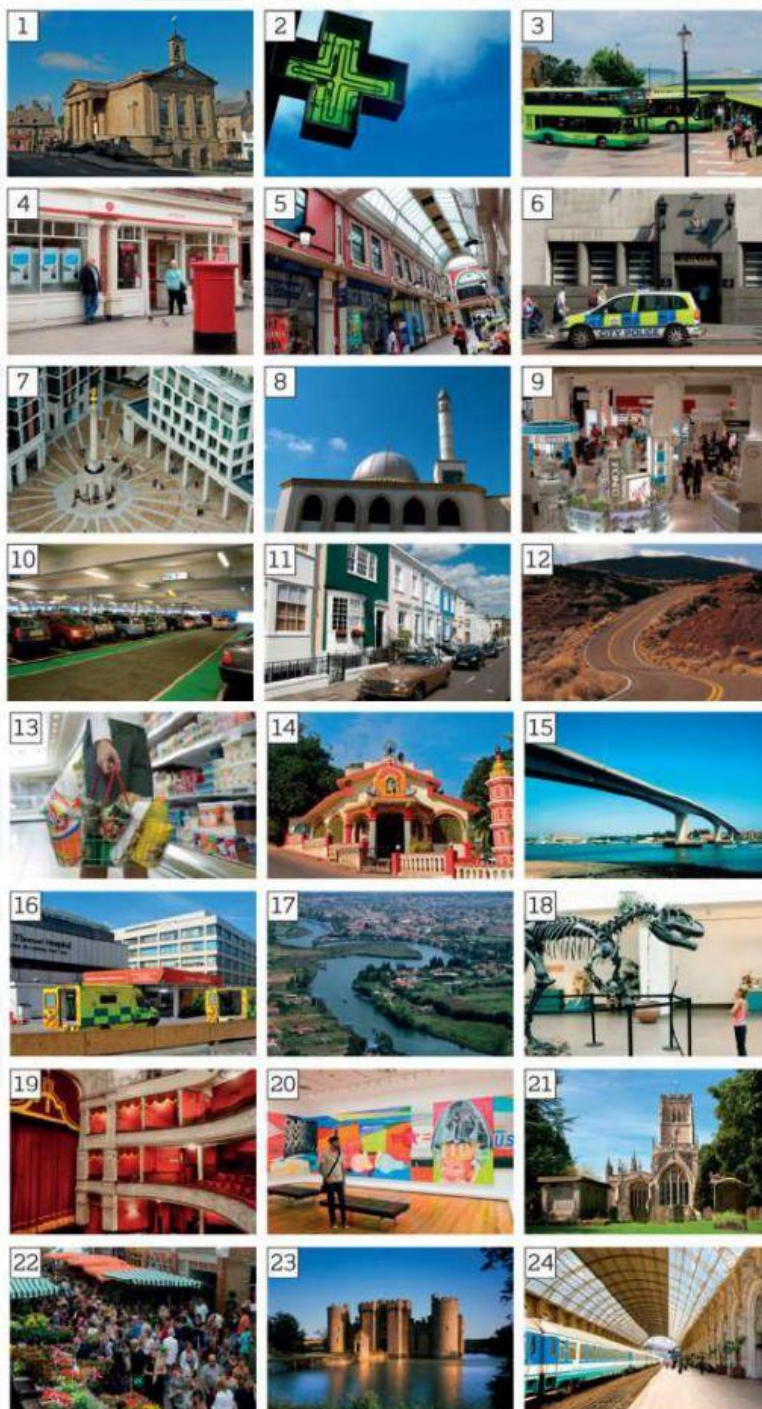
3 Wall

4 Edinburgh

5 The Rocky

b Listen and check. 5.2

Match the words and pictures



- ☐ an art gallery
- ☐ a bridge
- ☐ a bus station
- ☐ a car park
- ☐ a castle
- ☐ a chemist's / a pharmacy
- ☐ a church
- ☐ a department store
- ☐ a hospital
- ☐ a market
- ☐ a mosque
- ☐ a museum
- ☐ a police station
- ☐ a post office
- ☐ railway station
- ☐ a river
- ☐ a road
- ☐ a shopping centre / a mall
- ☐ a square
- ☐ a street
- ☐ a supermarket
- ☐ a temple

☐ a theatre

☐ a town hall



d Listen and check. 5.30

2 GRAMMAR; superlative adjectives

a Look at the photos. Do you know what countries they are in?



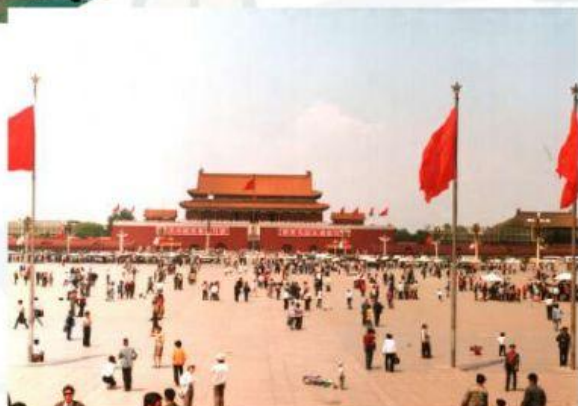
The Louvre is art gallery in the world.



Vasco da Gama Bridge is bridge in Europe.



The Yungas Road is in the world.



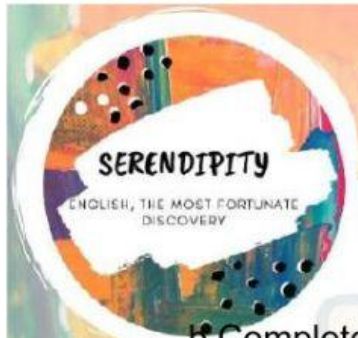
Tiananmen Square is square in the world.



Avenida 9 de Julio in Buenos Aires is street in the world.



Shinjuku Station in Tokyo is railway station in the world.



b Complete the captions with a phrase from the list. Listen and check.

5.4

the biggest

the busiest

the most dangerous

the longest

the most popular

the widest

c Complete the chart with superlatives from b.

Adjective	Comparative	Superlative
big	bigger	the biggest
long	longer	
wide	wider	
busy	busier	
dangerous	more dangerous	
popular	more popular	

d What letters do you add to a one-syllable adjective to make a superlative? What words do you put before longer adjectives?

It's **the hottest** month of the year.

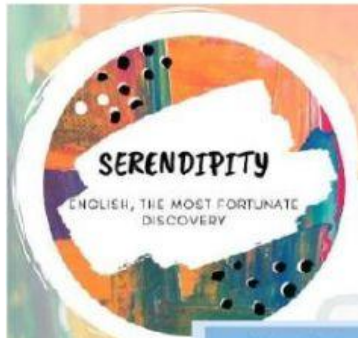
5 5)))

It's **the most dangerous** road in the world.

She's **the best** student in the class.

Monday is **the worst** day of the week.

- Use *the* + superlative adjective to say which is the (*biggest*, etc.) in a group.
- After superlatives, we use *in* (not *of*) + places, e.g. *the world*, *the class*.



adjective	comparative	superlative	
cold high	colder higher	the coldest the highest	add -est
big hot	bigger hotter	the biggest the hottest	double consonant, add -est
dry sunny	drier sunnier	the driest the sunniest	> -iest
dangerous	more dangerous	the most dangerous	the most + adjective
good bad far	better worse further	the best the worst the furthest	irregular

3 PRONUNCIATION; consonant groups

a Listen and repeat the adjectives in 2d.

5.6

Consonant groups

Words which have two or three consonants together, e.g. *fastest*, can be difficult to pronounce.

b Listen and repeat these superlatives.

5.7

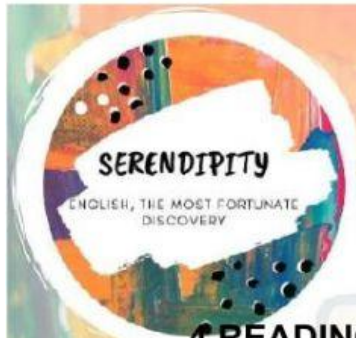
the most expensive

the most exciting

the oldest

the most beautiful

the smallest



4 READING

a Look at the photo. Would you like to go cycling there? Why (not)?



b Read the article: [Cycling on the most dangerous road in the world.](#)

Then answer the questions.

1. Where is The North Yungas Road?
2. Why is it called "Death Road"?
3. How wide is the road?
4. Why is it popular with cyclists?
5. When is the most dangerous time of year to go?
6. Why is the road similar to London Bridge and the Sydney Opera House?
7. Why didn't Marte enjoy cycling on the Yungas Road?

c What do the highlighted words mean?

d Is cycling popular in your country / region? Is there an area that is very popular for cyclists? Why?



5 SPEAKING

