

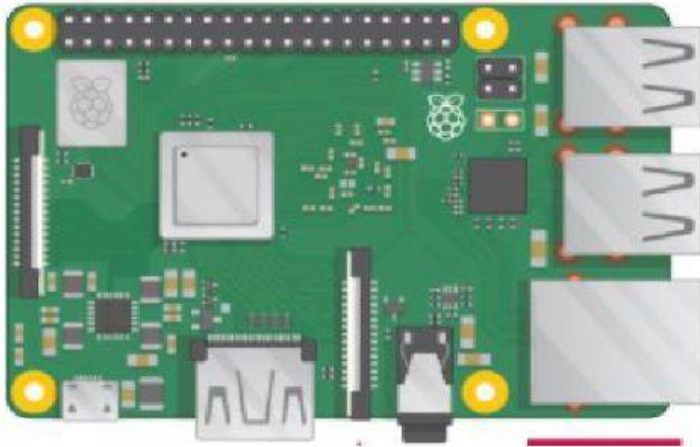
Learning Target: I can describe and explain the components of a Raspberry Pi.



Scan QR Code to watch video!

Raspberry Pi Interactive Review

Part 1 Directions: Drag and drop the following component parts next to their correct place on the Raspberry Pi diagram below.



Camera module port
Micro USB power
Ethernet port
USB port
Micro SD Card
HDMI port
USB port
GPIO pins (General Purpose Input/Output pins)
CPU (Central Processing Unit)
3.5 mm audio jack

Part 2 Directions: Drag and drop the components parts next to their description.

1. This component powers up the Raspberry Pi....
2. You can plug a mouse, keyboard, or game controllers into this component....
3. You plug this into your Raspberry Pi and connect it to your tv to get audio and video.....
4. This is where all of your disk storage is saved. It's so small and tiny!.....
5. You can plug this directly into your Raspberry Pi to get internet.....
6. You can attach other components to these pins....
7. You can insert a camera cord into this port...
8. I am the brain/control center of the Raspberry Pi....
9. You can plug an audio jack right here to get sound....

Camera module port	Micro USB power	USB port	GPIO pins	3.5 mm audio jack
HDMI port	CPU	Micro SD Card	Ethernet port	

Scan QR Code to take Quiz!



Created By: Chivas & Jordan Spivey