

# Natural Sciences

1. Fill in the titles and draw lines to the parts. Then complete the sentences.

A \_\_\_\_\_ cell

An \_\_\_\_\_ cell



Cytoplasm

Nucleus

Cell wall/membrane



All animal and plant cells have three basic parts: the \_\_\_\_\_, the \_\_\_\_\_ and the organelles. In plant cells there is also a \_\_\_\_\_ outside the membrane.

2. Say true or false.

a) Cells are always spherical \_\_\_\_\_

b) Animal and plant cells have chloroplast \_\_\_\_\_

c) Cells are living things \_\_\_\_\_

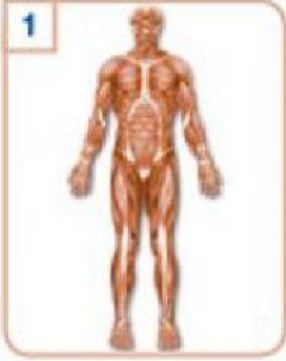
d) The nucleus protects the cell \_\_\_\_\_

e) Cytoplasm is a liquid protected by the membrane \_\_\_\_\_

f) Organelles carry out several life processes \_\_\_\_\_

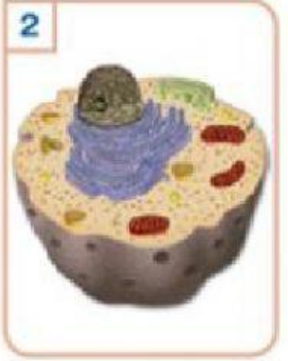
# Natural Sciences

3. Write organ, system, tissue or cell under a picture. Then write the letters in the boxes below.




1

a) \_\_\_\_\_




2

b) \_\_\_\_\_



3

c) \_\_\_\_\_



4

d) \_\_\_\_\_

Together, these form an apparatus or a system.

These group together to form organs.

These work together to form tissue. They are the smallest units of life.

These perform processes.

4. Complete the table

_____	Shape	Function
_____	Flat and circular	It carries oxygen from _____ _____
Nerve cell	_____	_____ _____
_____	Spherical (female) or oval with a long tail (male)	They _____ us to _____.

# Natural Sciences

5. Copy and correct the false sentences. If sentence is correct just copy it.

- a) Plant cells are usually circular.
- b) Plant cells have a rigid cell wall.
- c) Leaves, roots and the stem are the organs of a plant.
- d) The function of the leaves is to absorb water and minerals.

- a) \_\_\_\_\_.
- b) \_\_\_\_\_.
- c) \_\_\_\_\_.
- d) \_\_\_\_\_.

6. Write the words in the correct circle

absorb carbon dioxide   ●   contain chlorophyll   ●   formed by tissues   ●   leaves  
rigid wall   ●   rectangular or polygonal shape   ●   make food   ●   absorb sunlight

Cells

Tissue

Organ



# Natural Sciences

7. Write a title. Then complete the sentences below using your own words.

Title: \_\_\_\_\_

Cells are the basic building units of life, and there are about 100 trillion cells in the human body! But did you know that some living things are made of just one cell? They are called unicellular living things and some examples of these are bacteria and yeast.

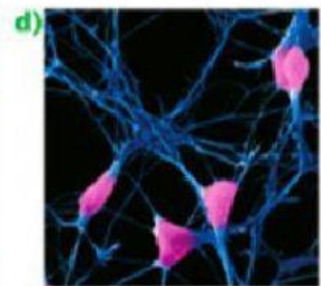
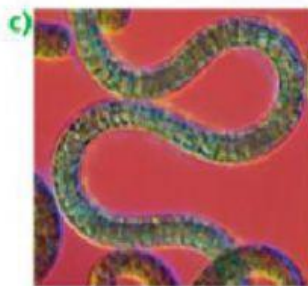
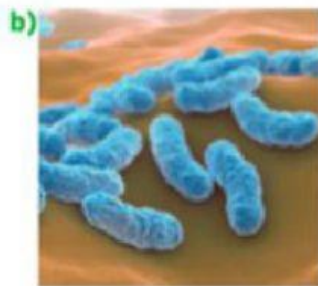
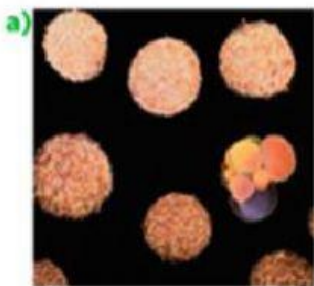
Because cells are so tiny, we need powerful microscopes to observe them. Thanks to these microscopes, scientists have been able to study cells and make discoveries. For example, about 200 years ago, a scientist called Louis Pasteur discovered a way to kill germs. His discovery is known as pasteurisation, and it has helped save millions of lives!

a) Human bodies have many cells but there are \_\_\_\_\_

b) Microscopes have helped \_\_\_\_\_

c) Louis Pasteur's discovery was important because: \_\_\_\_\_

8. Describe the shape of each group of cells: spherical, tubular, spiral or star-shaped.



9. Choose A or B. Write it in the box.

1-What is tissue made up of?

a) Cells

b) Muscles

2-What is a system?

a) Organs that work together

b) An unicellular organism

3- Which cells are star shaped?

a) Female reproductive cells

b) Nerve cells

1	2	3