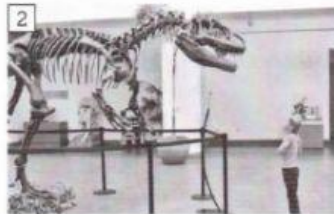
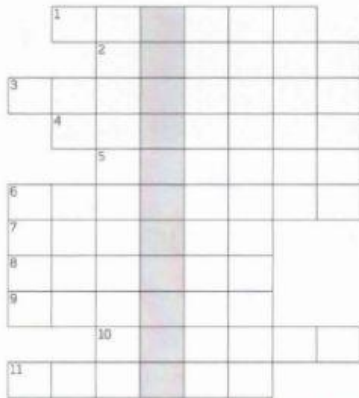


b Complete the puzzle. Can you find the hidden word?



3 PRONUNCIATION consonant groups

iChecker Listen and repeat the sentences.

- 1 It's the cheapest place to live.
- 2 It's the highest mountain in the world.
- 3 He's the healthiest person in the family.
- 4 It's the prettiest village in the country.
- 5 It's the most difficult language to learn.
- 6 It's the most polluted city in the area.
- 7 They're the most attractive couple I know.
- 8 She's the most intelligent person in the class.

4 LISTENING

a **iChecker** Listen to a radio interview with a travel writer.
What is his book called? _____

b **iChecker** Listen again. Complete the sentences.

- 1 Uluru is the _____ rock in the world.
- 2 It's _____ kilometres long.
- 3 The world's highest waterfall is in _____.
- 4 The tallest building in the world is _____ metres high.
- 5 The world's oldest city began in _____ BC.
- 6 The world's longest railway goes from _____ to Vladivostok.
- 7 The shortest runway in the world is _____ metres long.

5 READING

a Read the text and write T (true) or F (false).

- 1 Ulm Münster is the world's biggest church. _____
- 2 You can sometimes see the mountains from the top of the church. _____
- 3 Ulm Münster was the city's first church. _____
- 4 Construction of the church took over 500 years. _____
- 5 The church opens every day at 8 o'clock. _____
- 6 It's very expensive to visit Ulm Münster. _____

b Guess the meaning of the **highlighted** words. Check in your dictionary.

LIMIT

THE

THE

SKY'S

Ulm Münster in Germany is the tallest church in the world. The tallest part of the church is the steeple, which is 161.5 metres high and contains 768 steps. From the top of the church there is a view of the city, and on a clear day you can see the Alps.

Before the Münster was built, Ulm already had a church outside the city walls. However, the inhabitants of the city decided that they wanted a new church in the town centre and they agreed to pay for the building.

Construction of the church began in 1377 but the building wasn't completed until 31st May, 1890. At first the work was difficult because the heaviest parts fell down and the builders had to repair them. Then construction stopped from 1543 to 1817 for political reasons.

Today, tourists can visit the church every day of the year. Winter opening hours are from 9 a.m. to 4.45 p.m. and the church is open in the summer months from 8 a.m. to 7.45 p.m. Admission to the church is free, but the price of climbing the steeple is €3 for adults and €2 for children.

USEFUL WORDS AND PHRASES

Learn these words and phrases.

accidents /'æksɪdents/

fun /fʌn/

region /'rɪdʒən/

nearly /'nɪəli/

popular /'pɒpjələ/

wide (opposite narrow) /waɪd/

below (opposite above) /bi'ləʊ/