

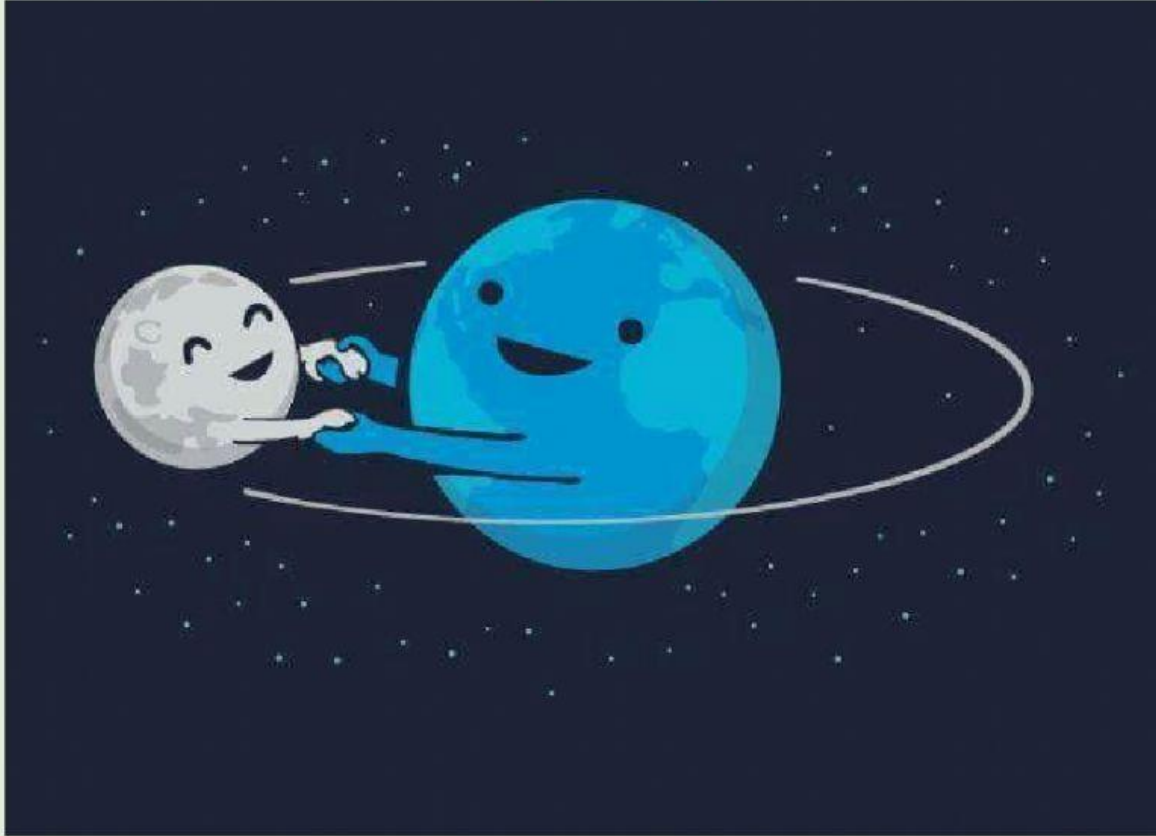


SCIENCE

CHAPTER 10-SOLAR SYSTEM AND BEYOND

LESSON 2-EARTH AND MOON

PART 2



Created by- Nisha Tanwar

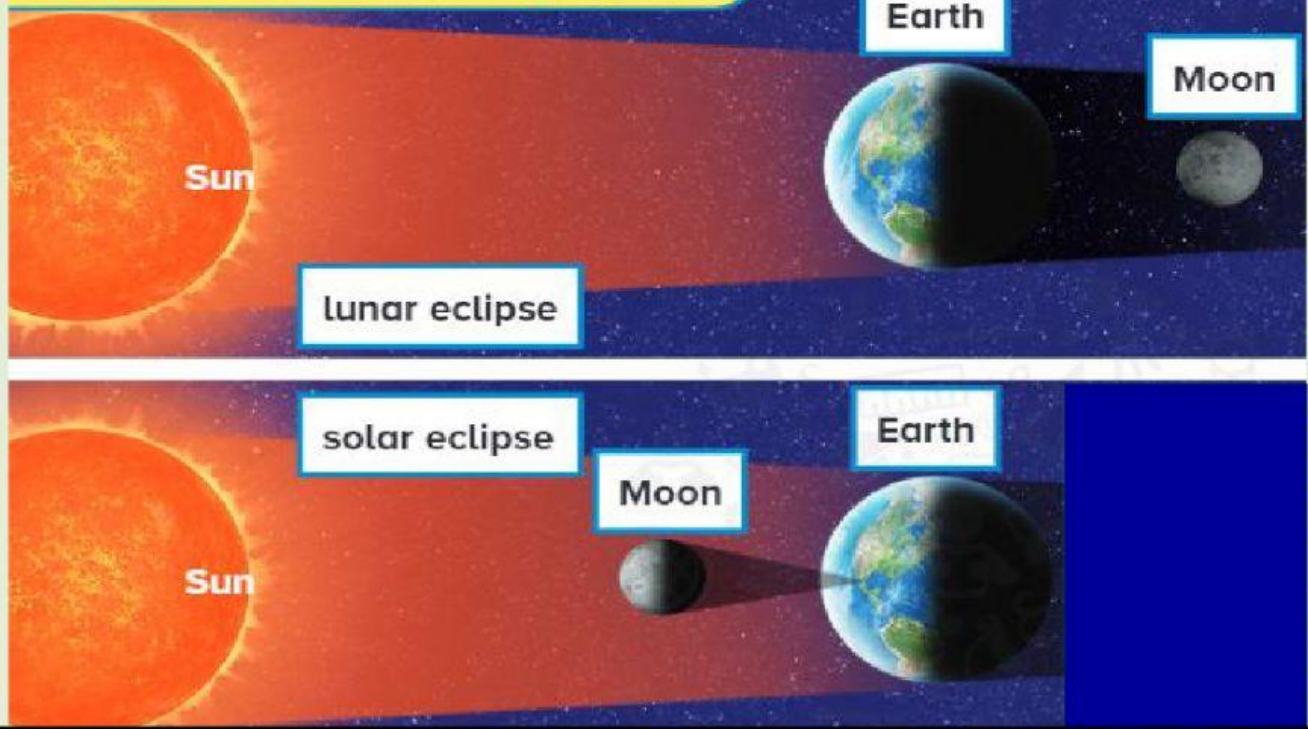
WHAT IS AN ECLIPSE?

An eclipse occurs when a shadow is cast by Earth or the Moon.

LUNAR ECLIPSE	SOLAR ECLIPSE
<ul style="list-style-type: none">• In a lunar eclipse, Earth casts a shadow on the Moon.• This happens when Earth is directly between the Sun and the Moon.• The Moon passes through Earth's shadow.	<ul style="list-style-type: none">• In a solar eclipse, the Moon casts a shadow on Earth.• Solar eclipses happen only during the new moon.• A partial solar eclipse is when part of the Sun is blocked. A total solar eclipse blocks all the Sun.

SOLAR AND LUNAR ECLIPSE

Two Kinds of Eclipses



**CLICK HERE TO
OPEN SOLAR AND
LUNAR ECLIPSE LAB**



TO SEE LUNAR AND SOLAR ECLIPSE →

Explore the mechanism of the solar and lunar eclipse!



Moon revolution around Earth



Earth rotation



Dimensions and distances in scale



Eclipse – view from Earth



Show the ecliptic plane

Month:



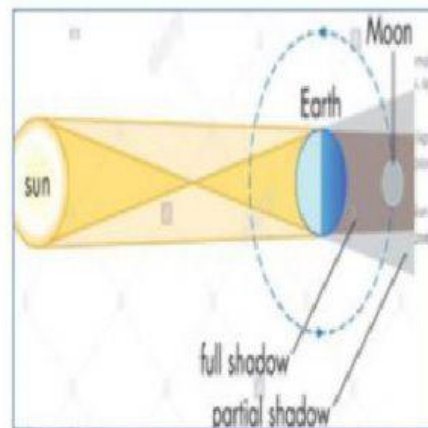
CHANGE MONTH



PRACTICE QUESTIONS

Q2: Connect the type of Eclipse to its correct answer

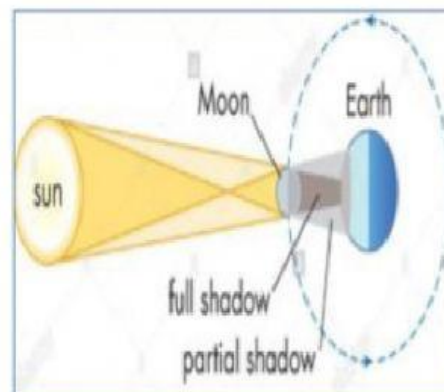
solar eclipse



**when Earth is
directly between
the Sun and the
Moon.**

At full Moon

lunar eclipse

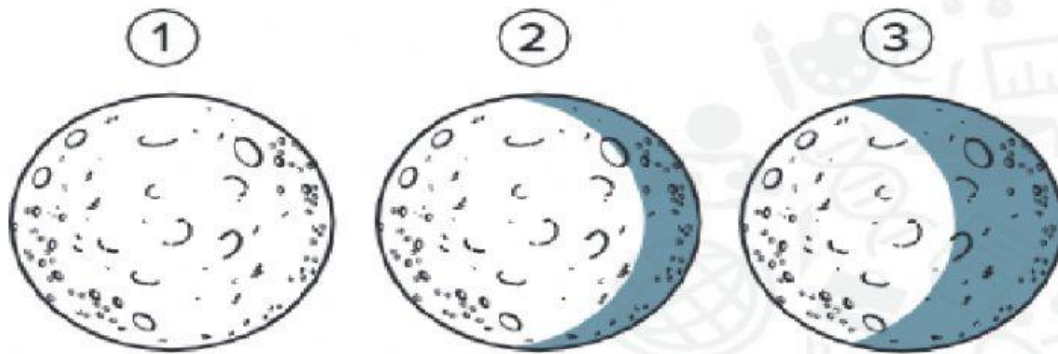


**When the Moon
between the Sun
and the Earth.**

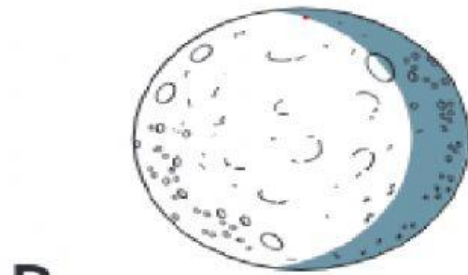
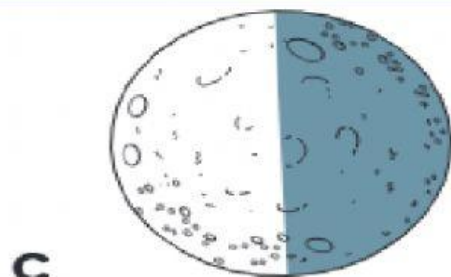
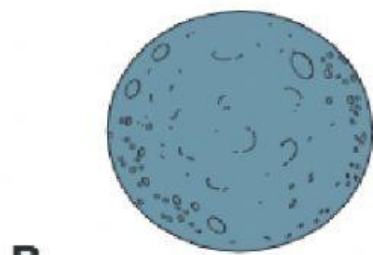
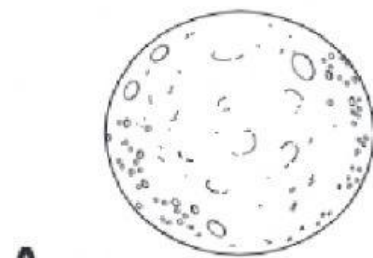
At new Moon

QUESTIONS FROM BOOK

1. Mariam observed the Moon every other night for one week. Look at what she saw.



Which phase will she see next?



How much time passes between a full moon and a new moon?

- A. 1 day
- B. 1 week
- C. 2 weeks
- D. 3 weeks

Test Prep What causes many of the craters on the Moon?

- A meteoroids striking the Moon
- B earthquakes on the Moon
- C landslides on the Moon
- D flooding on the Moon

How is the Moon different from Earth?

- A The Moon has no atmosphere.
- B The Moon has no mountains.
- C The Moon has different kinds of rock.
- D The Moon has different kinds of living things.