

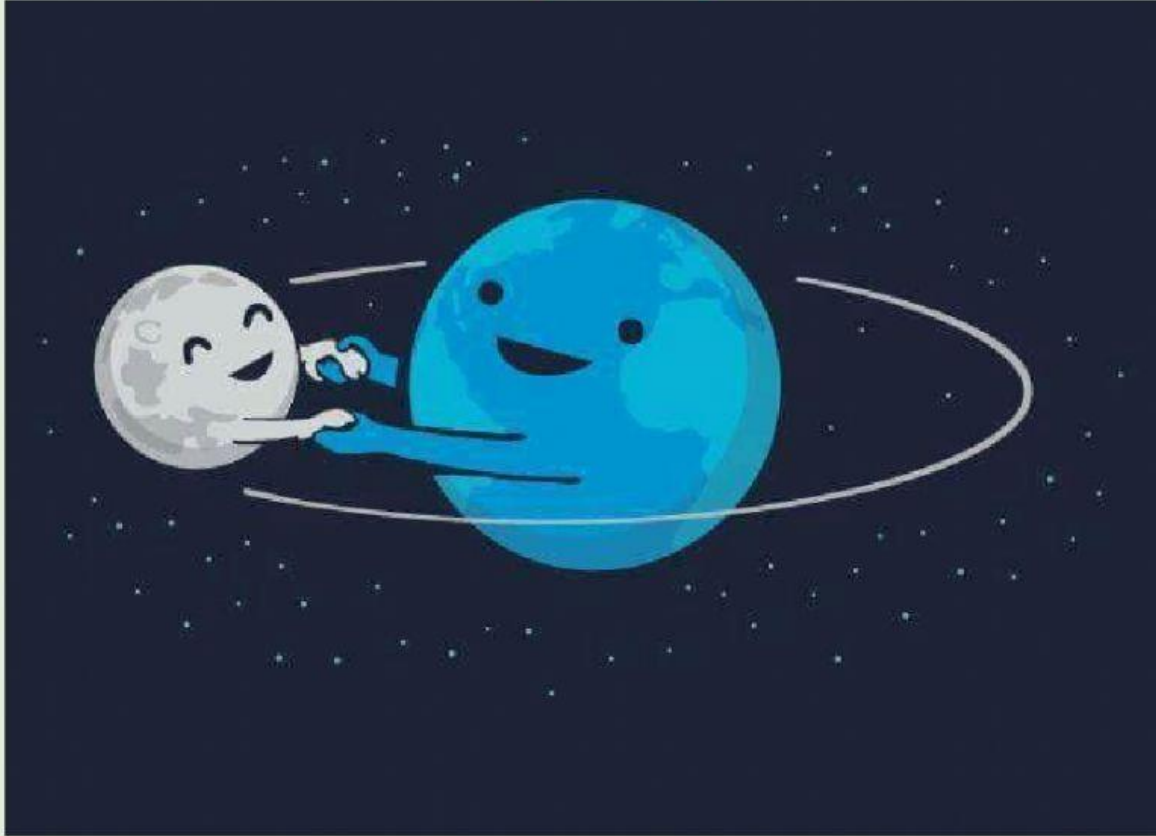


## SCIENCE

### CHAPTER 10-SOLAR SYSTEM AND BEYOND

#### LESSON 2-EARTH AND MOON

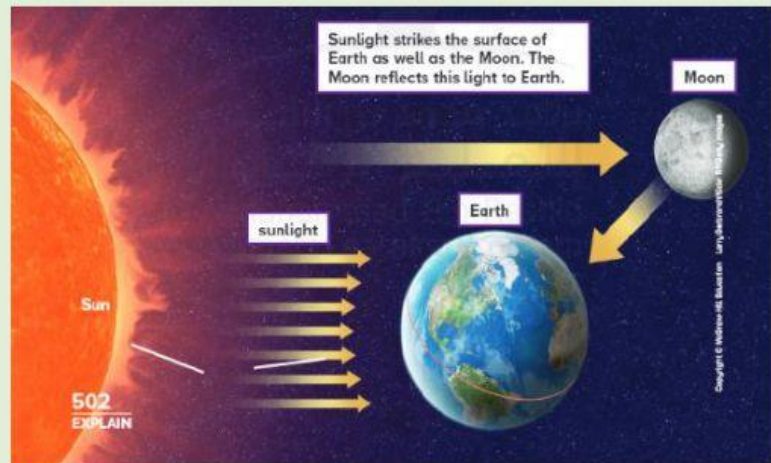
#### PART 1



Created by- Nisha Tanwar

## WHAT IS THE MOON LIKE?

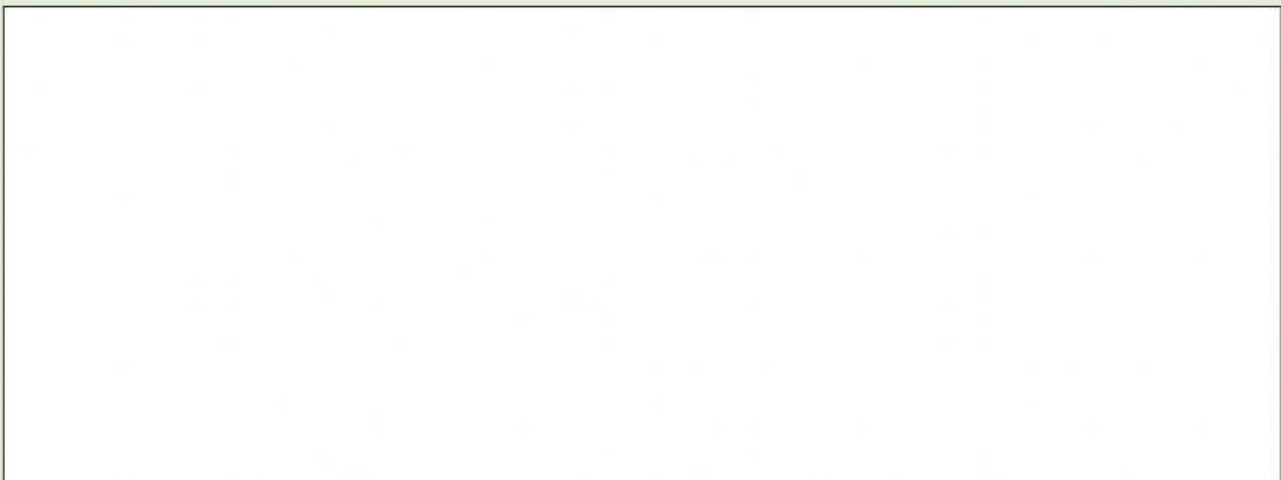
- The Moon does not make its own light.
- It reflects the light of the Sun.
- Moonlight is **REFLECTED SUNLIGHT!**



### IMPORTANT POINTS→

EARTH	<b><u>SAME</u></b>	MOON
Air	made of rocks Both orbit the sun	No air
Life		No life
Water		No atmosphere
atmosphere		Very little water

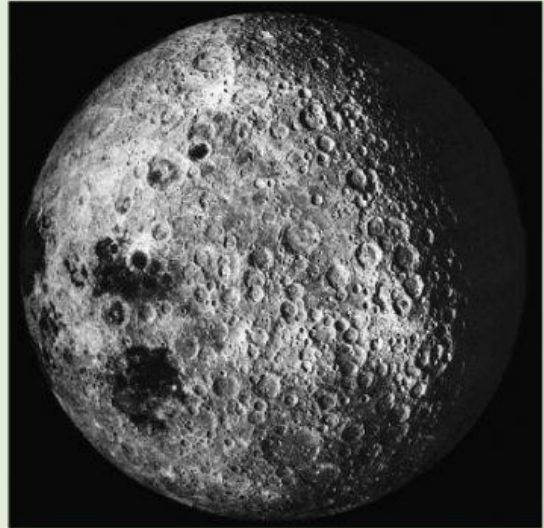
Watch this video about moon



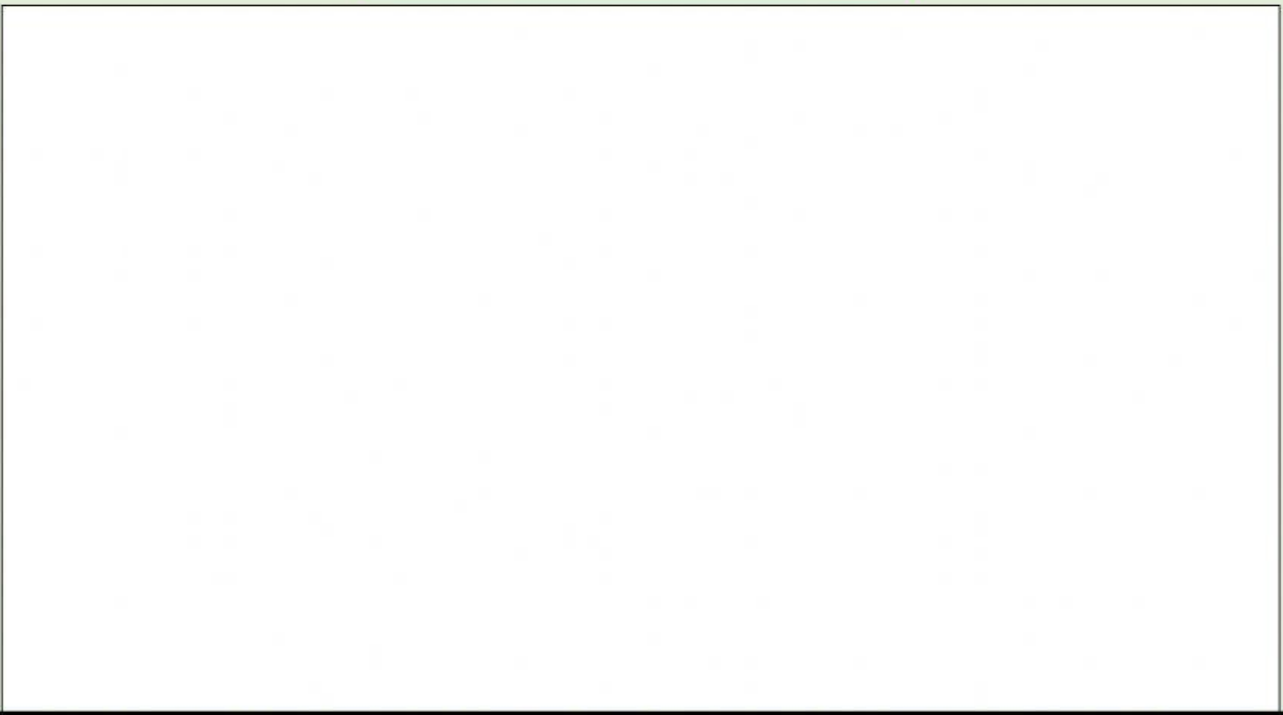
# **SURFACE FEATURES OF MOON**

## **CRATERS→**

- ❖ It is the hollow area or pit in the ground made by meteoroids hitting the moon.
- ❖ Moon has some mountains and some flat plains.



**Watch this video about craters**





## PHASES OF MOON

- ❖ As the moon orbits the Earth, the Sun shines on different parts of the moon and we see different parts
- ❖ Orbit around the Earth takes 29 days, almost a month

### 8 MOON PHASES

1 **New moon** →

moon is dark

2 **Waxing crescent moon** →

small part of the moon can be seen

3 **First quarter moon** →

the moon is quarter way around the earth

4 **Waxing gibbous moon** →

moon is almost full

5 **Full moon** →

entire lit side is seen

6 **Waning gibbous moon** →

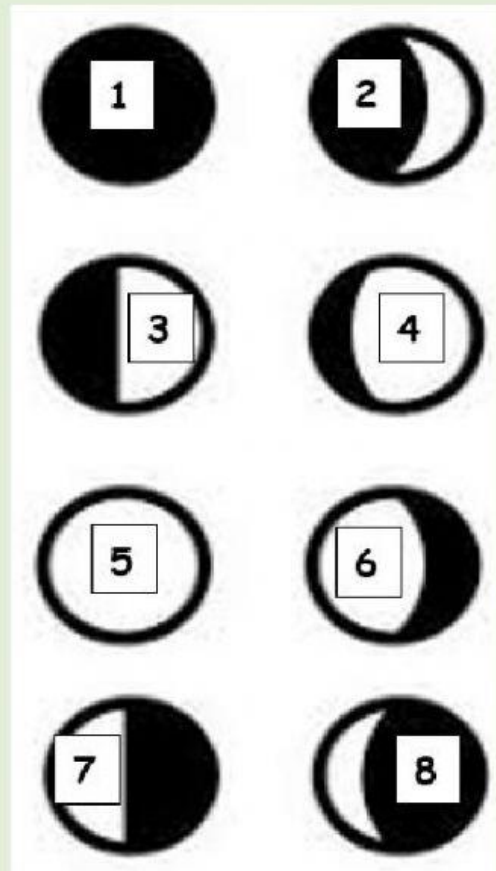
slightly than  $\frac{3}{4}$  of the way around the earth

7 **Third quarter moon** →

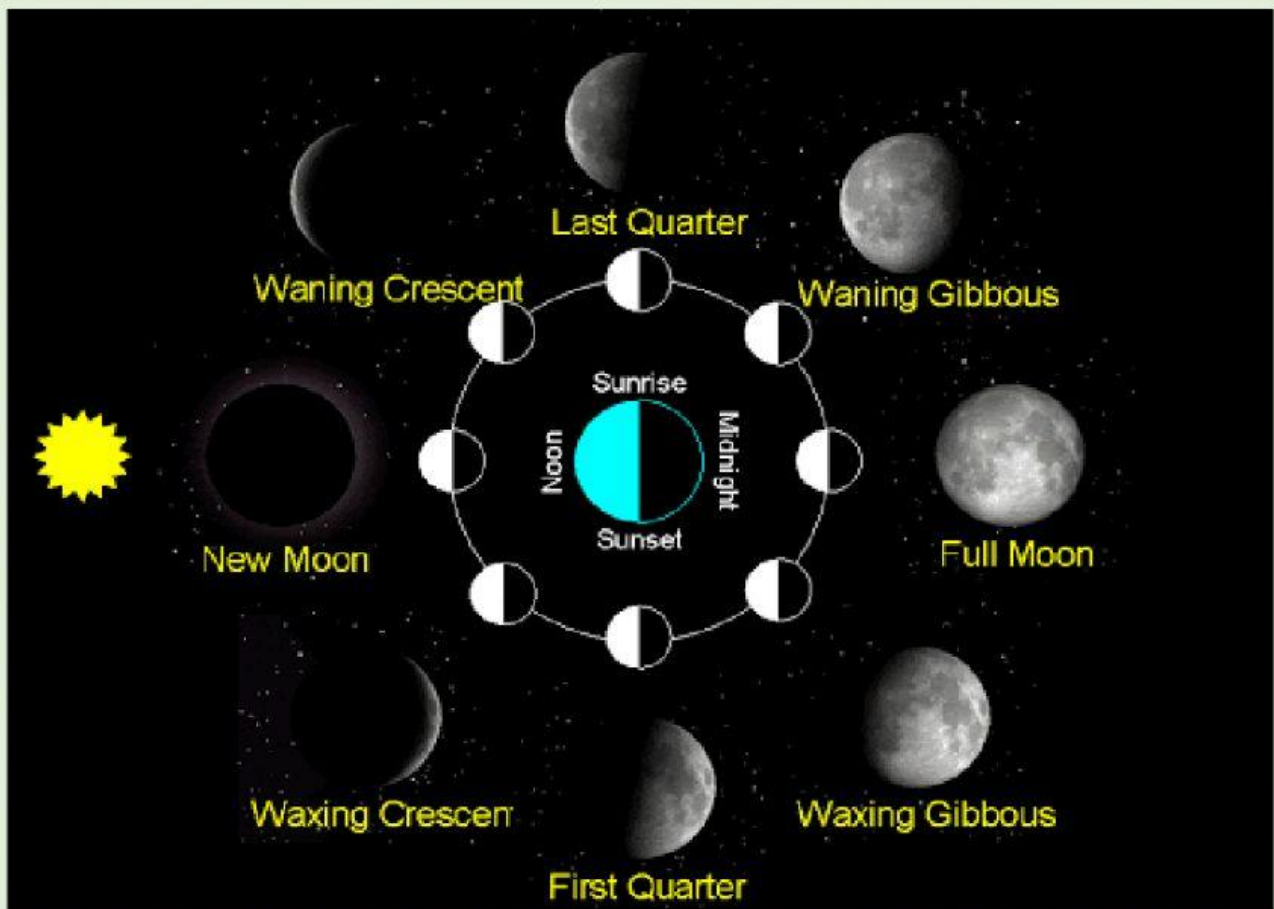
moon is  $\frac{3}{4}$  on its way around the earth

8 **Waning crescent moon** →

see only a small part of the moon



Watch this video about phases of moon





**CLICK HERE TO  
OPEN PHASES OF  
MOON LAB**



**TO SEE PHASES OF MOON IN LAB**

☐ Show Time Tickmarks

☒ Show Lunar Landmark

## **MOON GRAVITY AND ITS EFFECT**

- ❖ Pulls slightly on Earth on the sides facing the moon
- ❖ The water or land bulges slightly outward
- ❖ It causes tides – daily rise and fall of ocean's surface/level

## **PRACTICE QUESTIONS**

**Reflected - Largest, brightest – Tides – Gravity – 29 - Phases**

1. Moon ..... object in the sky.
2. Moonlight is ..... sunlight.
3. The Moon revolves around Earth in over ..... days.
4. The apparent shapes of the Moon in the sky are.....
5. The Moon's ..... causes tides.
6. .....are the daily rise and fall of the ocean's surface.

## DRAG AND DROP

Waxing Gibbous

First Quarter

Waxing Crescent

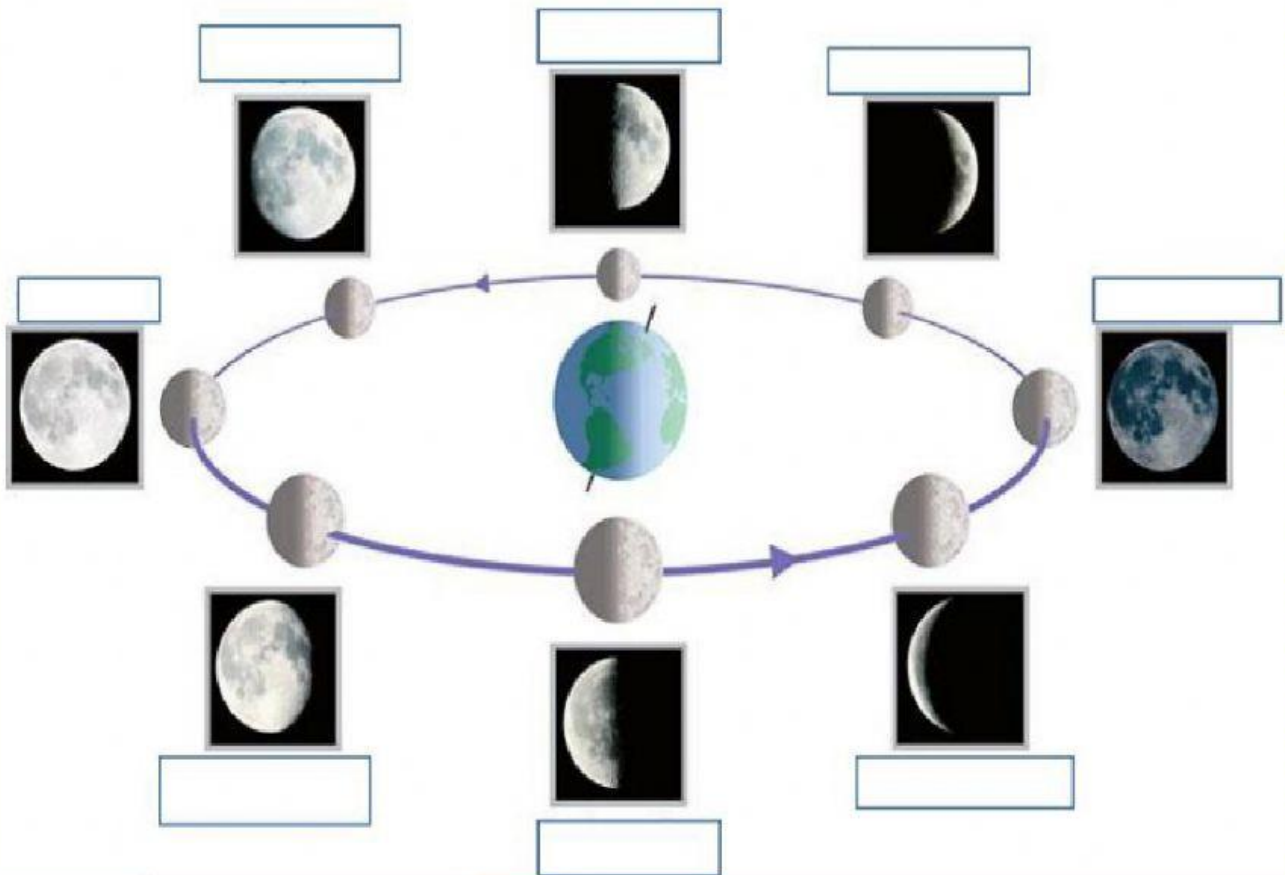
Full Moon

Waning Crescent

New Moon

Waning Gibbous

Third Quarter



## QUESTIONS FROM BOOK

1.

How much time passes between a full moon and a new moon?

- A. 1 day
- B. 1 week
- C. 2 weeks
- D. 3 weeks

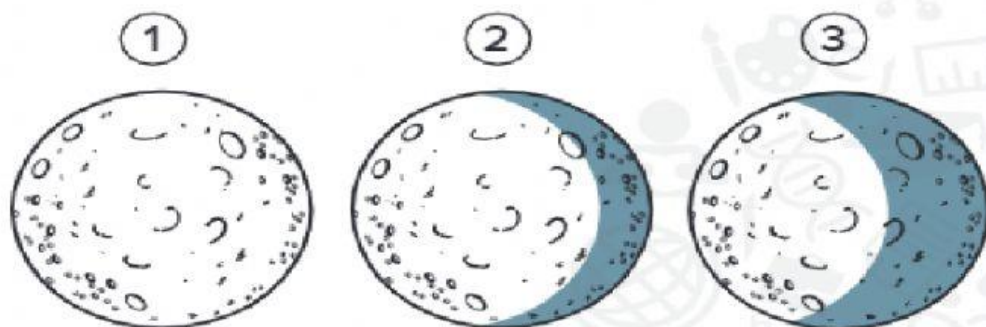


**Test Prep** What causes many of the craters on the Moon?

- 2.
- A** meteoroids striking the Moon
  - B** earthquakes on the Moon
  - C** landslides on the Moon
  - D** flooding on the Moon

3.

1. Mariam observed the Moon every other night for one week. Look at what she saw.



Which phase will she see next?

