

6. Writing; Describing your home.

- a. Read the website and the description of a flat in London. Would you like to stay there?

house swap

[Home](#) | [How it works](#) | [Search](#) | [News and views](#) | [Join our community](#) | [Help](#)

Do you want a cheap holiday? Write a description of your house or flat, and say where you want to go. Post the description on our website, and find someone to swap homes with.

My home

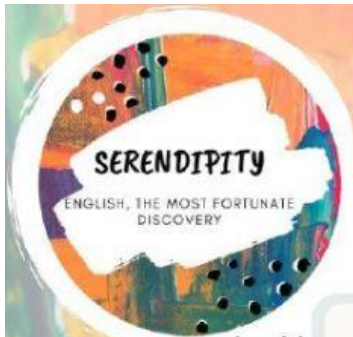
Flat in north London

My flat is in a quiet street in Hampstead, north-west London. It's on the first floor. It has two bedrooms, two bathrooms, a living room, a study, and a kitchen. The kitchen is quite big and there's a table and chairs so you can eat there. There's a sofa bed in the study, so you can use it as an extra bedroom. The bedrooms have a great view and you can see many London landmarks like the London Eye and St Paul's Cathedral. The flat doesn't have a garden, but it's very near Hampstead Heath, a beautiful big park. It's a 5-minute walk from shops, and bus and underground stations, and about a 30-minute train ride from Oxford Street in the centre of London.



Where I want to go

San Francisco, Siena,
Palma de Majorca



b. Number the information in the order it comes in the description.

- ☐ Details about some of the rooms
- ☐ How far it is from the city centre
- ☐ What floor the flat is on
- ☐ What rooms there are
- ☐ What services there are nearby
- ☐ What you can see from the flat
- ☐ Where it is

c. SO



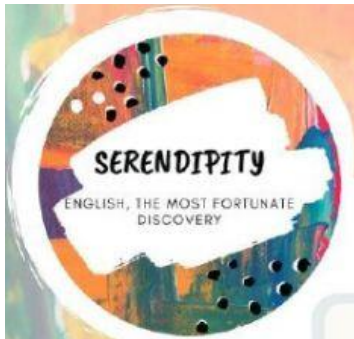
so

There's a sofa bed in the study, so you can use it as an extra bedroom.

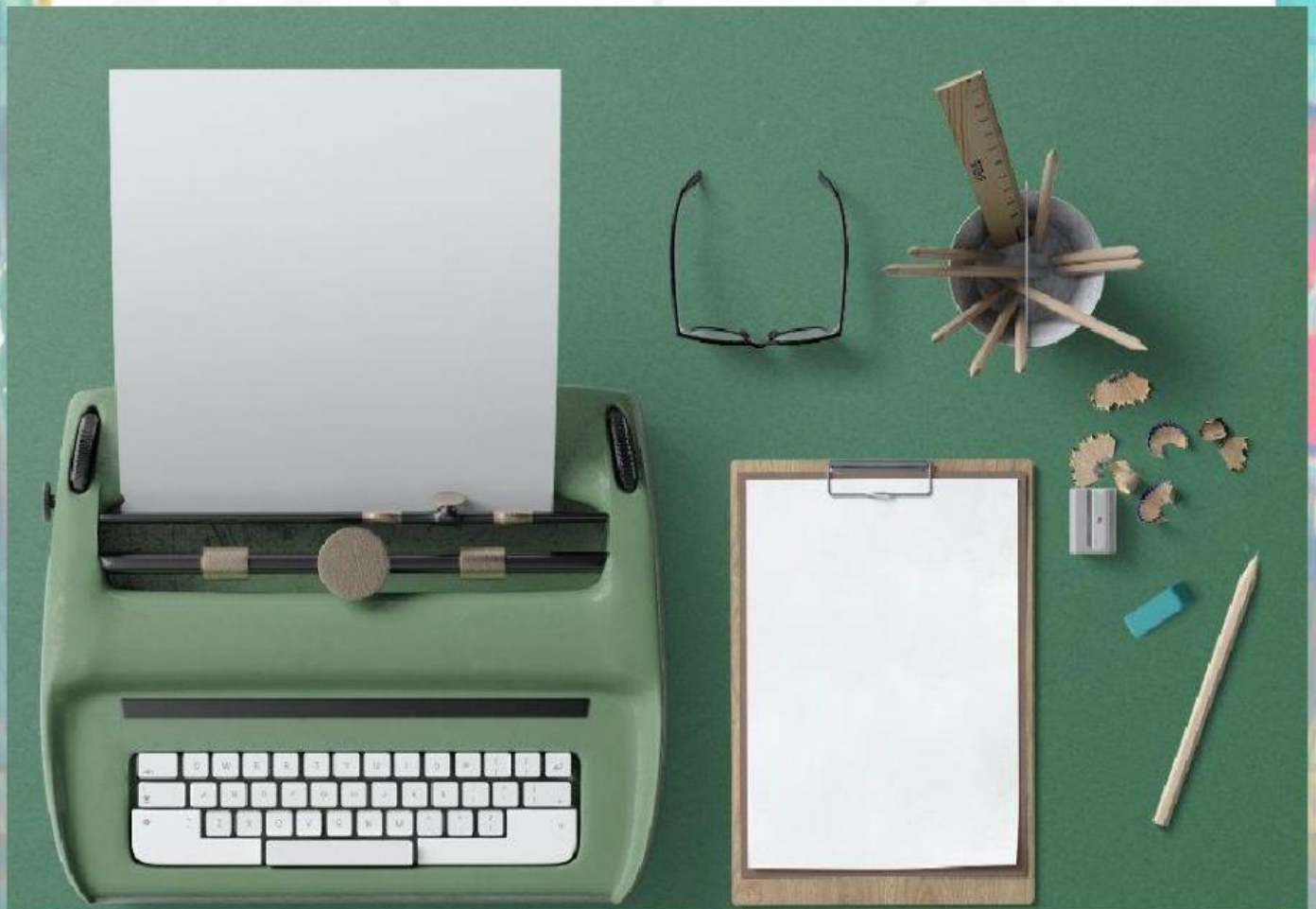
We can use **so** to express a result or consequence, e.g.

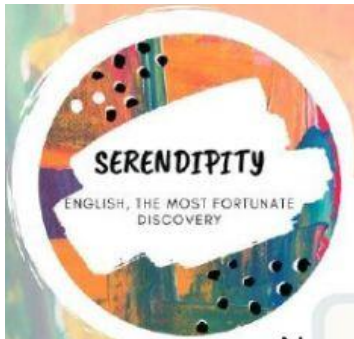
I was very tired, so I went to bed early.

My office is near my house, so I walk to work.

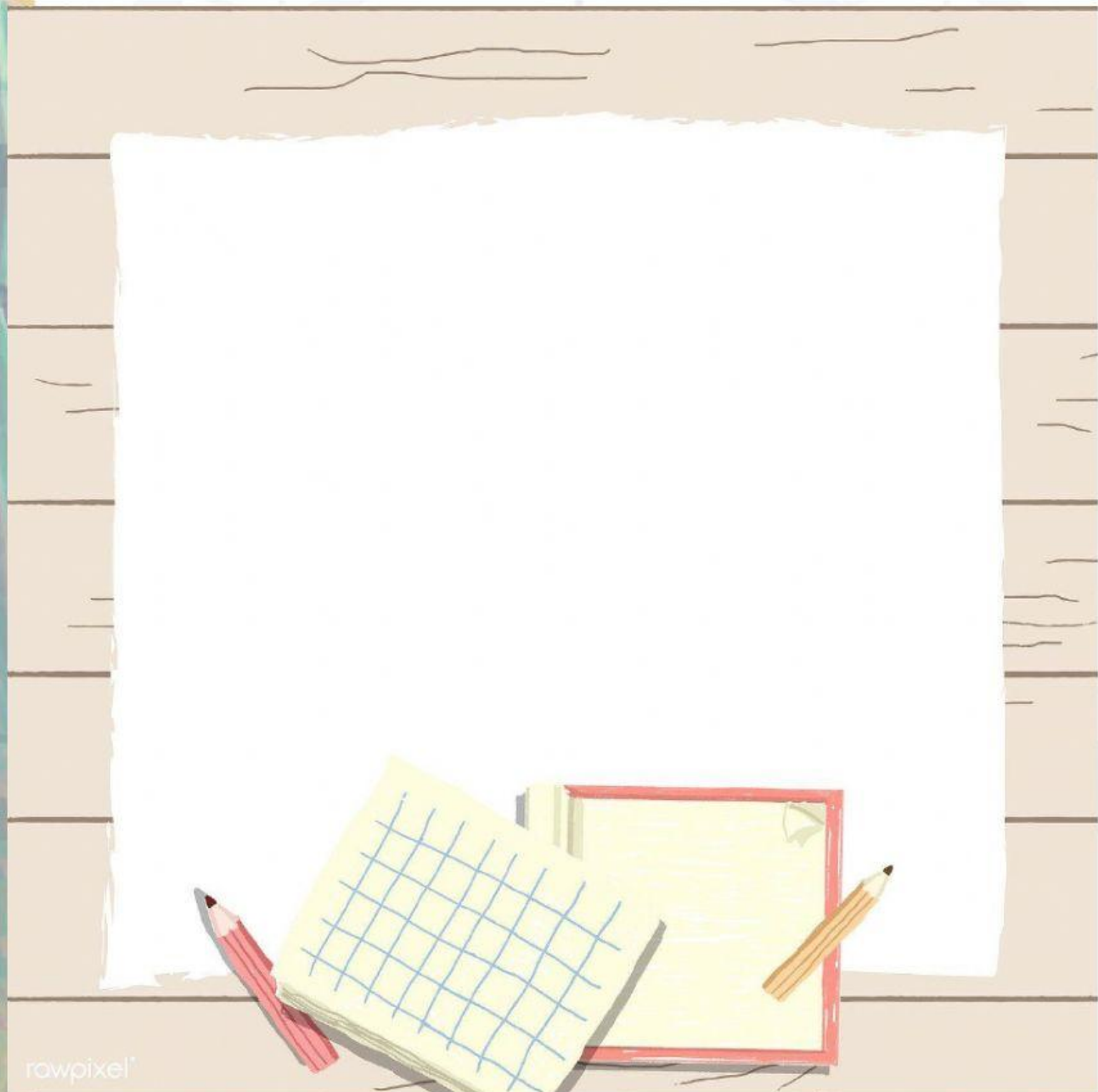


d. Make notes on the topics in exercise b about your house or flat.





e. Now write your description.



rowpixel

f. Check your description for mistakes.