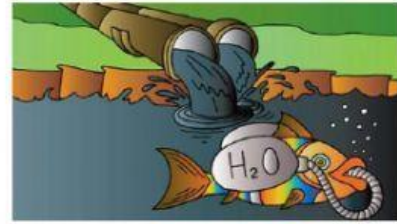


Pollution is the degradation of natural environment by external substances introduced directly or indirectly. Human health, ecosystem quality and aquatic and terrestrial biodiversity may be affected and altered permanently by pollution.

Pollution occurs when ecosystems can not get rid of substances introduced into the environment. The critical threshold of its ability to naturally eliminate substances is compromised and the balance of the ecosystem is broken.



Air Pollution and the sources of pollution are numerous. The identification of these different pollutants and their effects on ecosystems is complex. They can come from natural disasters or the result of human activity, such as oil spills, chemical spills, nuclear accidents . These can have terrible consequences on people and the planet where they live: destruction of the biodiversity, increased mortality of the human and animal species, destruction of natural



habitat, damage caused to the quality of soil, water and air .



environmental damage must be punishable by law, and polluters should pay compensation for the damage caused to the environment

Preventing pollution and protecting the environment necessitate the application of the principles of sustainable development. We have to consider to satisfy the needs of today without compromising the ability of future generations to meet their needs. This means that we should remedy existing pollution, but also anticipate and prevent future pollution sources in order to protect the environment and public health. Any

- 1 Why is pollution? Define it copying from the text.
- 2 What can be affected by pollution?
- 3 What can be affected permanently by pollution?
- 4 How can we prevent pllution?
- 5 What should happen to polluters, people who pollute the environmet
- 6 Why is pollution? Define it copying from the text.
- 7 What can be affected by pollution?
- 8 What can be affected permanently by pollution?
- 9 Where do pollutants come from?
- 10 What are the consequences of pollution to the planet?

