

Name _____

Date _____

NONFICTION TEXT FEATURES

Word Bank

boldface, caption, diagram, glossary, heading, highlighted text, index, map, photograph, sidebar, table of contents, title

Label all the text features shown.

Leopard Frog

Habitat	3
What they eat	4
Where they live	6
North America	7
Mexico	8
Index	9
Glossary	9



Southern Leopard Frog
(*Rana sphenoccephala*)

Did you know?

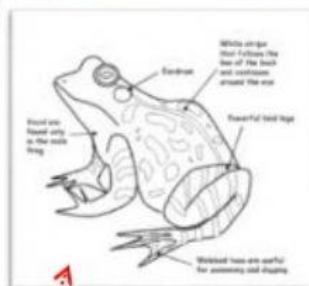
A genetic mutation gives rise to the Burns leopard frogs, which have no spots.

Leopard frogs, also called **meadow frogs**, are the archetypal "grass frogs" of North America, a collection of about 14 species within the true frog genus *Rana*. They are generally very similar, green with prominent black spotting (though actually more like that of a cheetah than that of a leopard). They can be told apart by their distribution and certain rather subtle ecological, behavioral, morphological and **genetic** traits. Their range extends throughout temperate and **subtropical** North America to northern Mexico, with some species found even further south. Once abundant in North America, their population has declined in recent years because of pollution and **deforestation**.

North America



Northern Leopard Frog Range



Deforestation: the removal of a forest.

Genetic: the genetic makeup of an organism or group of organisms

Subtropical: located between tropics and temperate areas.

Diet	4
Habitat	3
Mexico	8
North America	7
Species	7, 8