

Answer all the questions.

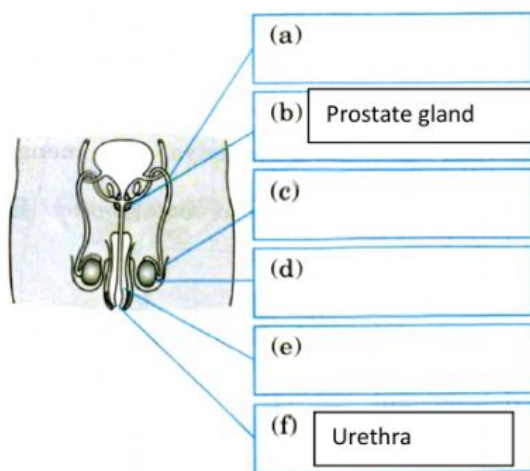
- _____ is the process of producing new individuals or offspring from living organisms.
- State two types of reproduction.
 - _____
 - _____
- _____ is the process of fusion of the nuclei of a sperm and an ova.
- Classify the following organisms into their type of reproduction.

Fish	Reptile	Amoeba	Durian	Fern	Hydra
------	---------	--------	--------	------	-------

Asexual reproduction	Sexual reproduction
1. _____	1. _____
2. _____	2. _____
3. _____	3. _____

- Label the male reproductive organs with the given information.

Scrotum	Penis	Testis	Sperm duct
---------	-------	--------	------------



Reproductive organ	Function
a)	Channels sperms
b) Prostate gland	Produces a fluid that activates sperms
c)	Protects the testis
d)	Produces sperm
e)	Channels sperms to the vagina
f) Urethra	Channels sperms from the testis

Front view of the male reproductive system

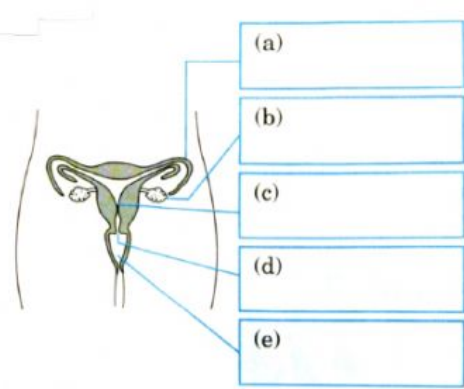
- _____ is the male gamete.

7. Tick (/)the changes that occur in the male during puberty.

	Growth of a moustache and beard
	Enlargement of the pelvis
	Voice becomes hoarse
	Growth of armpit hair

8. Label the female reproductive organs with the given information.

Cervix	Fallopian tube	Vagina	Ovary	Uterus
--------	----------------	--------	-------	--------



A front view of the female system

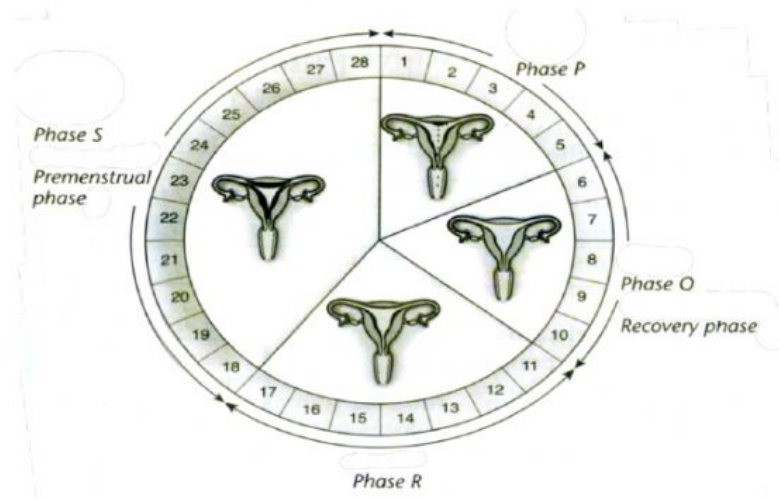
Reproductive organ	Function
a)	The place where fertilisation occurs
b)	Produces ova
c)	Implants and protects the embryo
d)	Connects the uterus to the vagina
e)	Receive sperms from the penis

9. _____ is the female gamete.

10. Tick (/)the changes that occur in the male during puberty.

	Beginning of menstruation
	Enlargement of the pelvis
	Enlargement of the bones and muscles
	Growth of armpit hair

Study the menstrual cycle below.



11. State the number of days for each menstrual cycle.

12. Based on the diagram given above, arrange the changes in the uterine wall according to their phase (starting from the first day) to explain the menstrual cycle. Match them correctly.

P	Ovulation occurs during the fertile phase
Q	The uterine lining breaks down, menstruation occurs
R	The uterine lining continues to thicken
S	The uterine lining starts to thicken

13. The tissue of the uterine wall breaks down at phase P. Name phase P.

14. Tick (/) the contents of the menstrual discharge.

<input type="checkbox"/>	Dead ovum	<input type="checkbox"/>	Blood	<input type="checkbox"/>	Embryo	<input type="checkbox"/>	Tissue of the uterus wall
--------------------------	-----------	--------------------------	-------	--------------------------	--------	--------------------------	---------------------------

15. The development of human



Process	(a)	(b)	(c)	(d)
Fertilisation	Consists of one cell only	Consists of a ball of cells	Has limbs which can be identified	A fetus that is born

16. Complete the table by filling in the nutrients required by a pregnant mother. Then, choose the answers on the importance of avoiding the intake of substances that are harmful to the foetus.

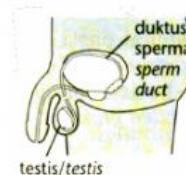
Protein	Iron	Calcium	Folic acid	Phosphorus
---------	------	---------	------------	------------

Nutrition	Importance
a)	For proper development of the nervous system in the foetus
b)	To build foetus tissues

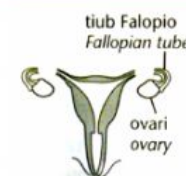
17. Name the device, substances or method used in birth control. Circle the correct answers to explain their functions.

Diaphragm	Spemicide	Ligation	Implant
Condom	Contraceptive pills	Intrauterine contraceptive devices (IUCD)	Vasectomy

a) _____ is a surgery to cut the sperm duct and two ends are tied up.



b) _____ is a surgery to cut the Fallopian tube and two ends are tied up.



c) _____ is a rubber sheath worn on the penis of the male.



18. State the ways to overcome sterility based on the explanation.

Surgery	Nutrition	Hormone treatment	In vitro fertilisation
---------	-----------	-------------------	------------------------

Ways	Explanation
a)	To increase the production of sperms or ova
b)	Rectify the deformity of the reproductive organ
c)	Fertilisation of the sperm and the ovum is conducted outside the body and the embryo produced is put into the female's uterus (test tube baby)