

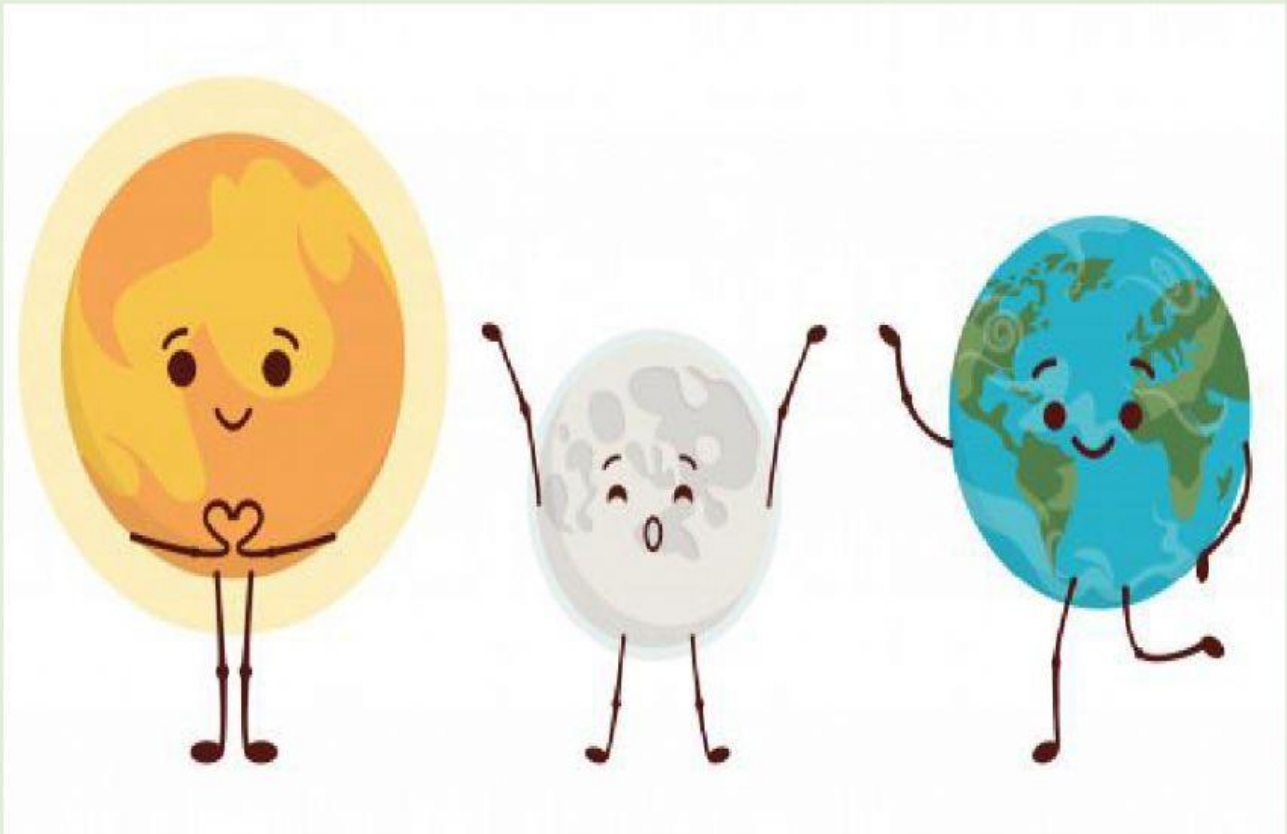


SCIENCE

CHAPTER 10-SOLAR SYSTEM AND BEYOND

LESSON 1-EARTH AND SUN

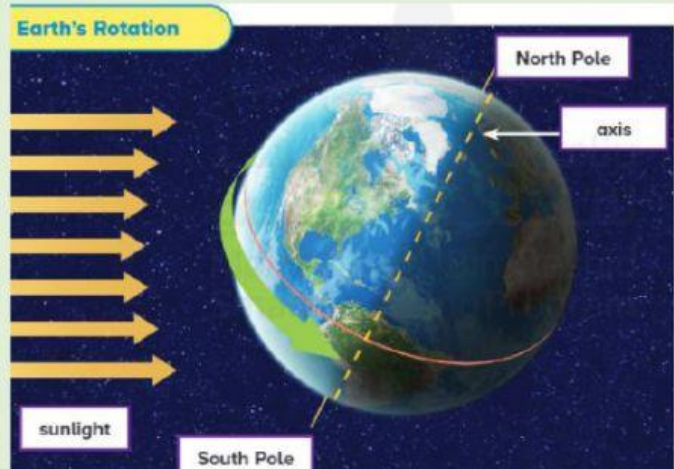
PART 1



Created by- Nisha Tanwar

WHAT CAUSES DAY AND NIGHT

- The earth's rotation around its axis causes day and night.
- A rotation takes 24 hours



Watch this video about earth rotation

CLICK HERE TO
OPEN EARTH
ROTATION LAB



SHADOWS

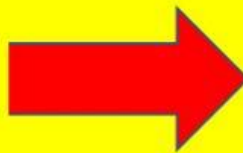
A shadow forms when light is blocked.

- ❖ As the position of the Sun changes, your shadow changes too.
- ❖ EARLY IN THE MORNING, YOUR SHADOW IS LONG.
- ❖ IT SHRINKS UNTIL MIDDAY.
- ❖ THEN IT GROWS LONGER AGAIN UNTIL SUNSET.

Watch this video about changing shadows



**CLICK HERE TO
OPEN SHADOW LAB**

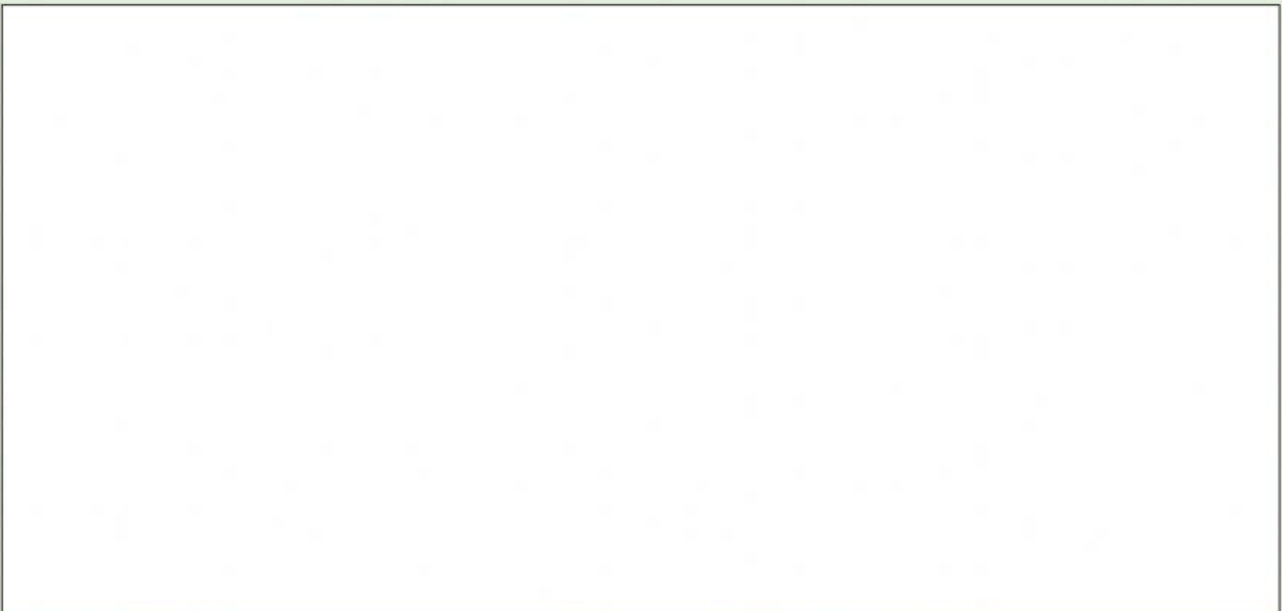


APPARENT MOTION

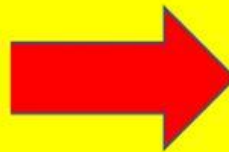
Apparent motion is the way something appears, or seems, to move.

- ❖ The Sun appears to rise in the east.
- ❖ It seems to set in the west. Apparent motion is not real motion.

Watch this video about apparent motion



**CLICK HERE TO DO
EDUSHARE
ACTIVITY**



PRACTICE QUESTIONS:

1. The spinning of the earth on its axis is:
 - A. Rotation
 - B. Revolution
2. For one rotation on its axis earth takes:
 - A. 24 hours
 - B. 60 minutes
 - C. 24 days
3. The axis is a real line from north pole to south pole.
 - A. True
 - B. False
4. It is the movement of the sun that causes day and night.
 - A. True
 - B. False
5. What causes day and night?
 - A. Rotation of the sun
 - B. Rotation of the earth
6. Which process takes Earth 24 hours to complete?

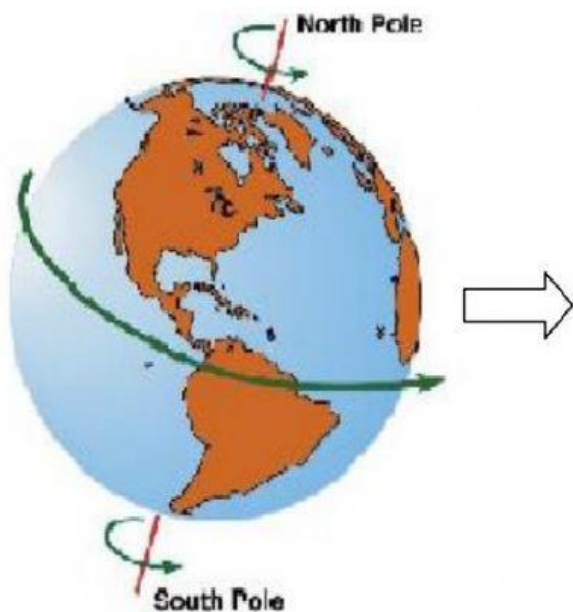
A. Rotation

B. Revolution

C. shadows

D. seasons

FILL THE BLANKS IN THIS DIAGRAM



: The Earth moves around its own axis.

It takes

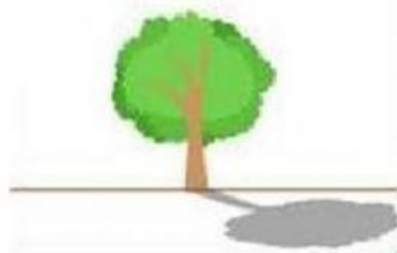
It produces

✓ Choose what the tree's shadow will look for each given picture.

1-



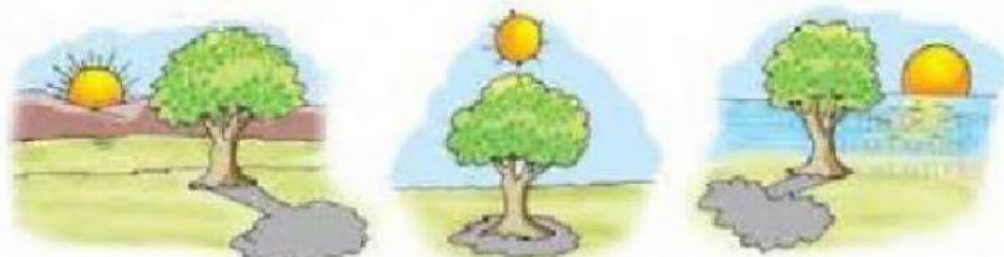
2-



Shadows are longest in the .



Shadows are shortest in the .



QUESTIONS FROM BOOK

Your shadow is short when you go outside. What time of day is it?

- A** early morning
- B** late afternoon
- C** after sunset
- D** near noon

What causes Earth's changing seasons?

- A** Earth's rotation around the Sun
- B** the Sun's rotation around Earth
- C** Earth's tilted axis and revolution around the Sun
- D** Earth's rotation and the Moon's revolution around Earth

We see the Sun rise and set because

- A.** Earth revolves around the Sun.
- B.** Earth rotates on its axis.
- C.** the Sun revolves around Earth.
- D.** the Moon revolves around Earth.