

David Attenborough

Sir David Attenborough is a famous British wildlife film-maker. His TV shows have helped people learn lots about animals and their environments for over 60 years!

His Early Life

Attenborough loved to collect fossils and stones when he was a little boy.

He studied zoology at university so he could learn all about animals and their habitats.



Television

In 1952, many people didn't have a TV, but Attenborough got a job at the BBC. He started to make TV shows about animals.

The first TV show was called 'Animal Patterns'. He talked about the colours and patterns of many amazing animals.

In 1979, Attenborough made a show called 'Life on Earth'. It was very popular. Since then, he has written and presented many more shows. Lately, he made 'Blue Planet 2' which showed people how awful plastic pollution is for our world.

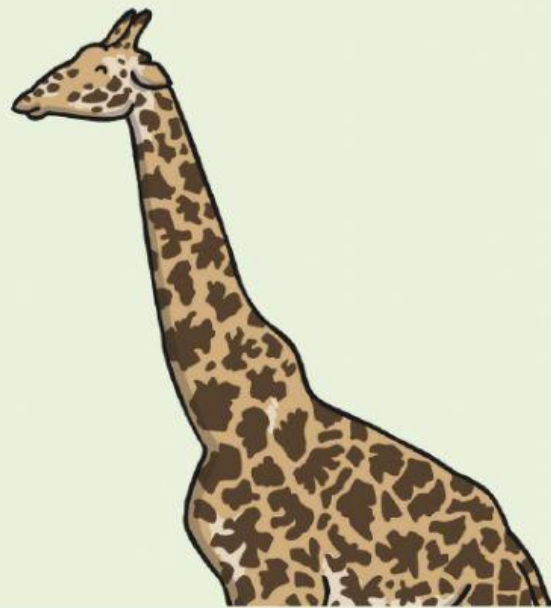
Interesting Facts

Date of Birth: 8th May 1926

Home: London, England

Career:

- He joined the BBC in 1952.
- He became Sir David Attenborough in 1985.



Did You Know...?

- There is a ship called RRS Sir David Attenborough!
- He is the oldest person to have ever visited the North Pole!



1. **Who is Sir David Attenborough? Tick one**

- ☐ a famous racing driver
- ☐ a famous actor
- ☐ a famous wildlife film-maker

2. **What did he collect when he was young? Tick one.**

- ☐ fossils and stones
- ☐ stones and shells
- ☐ animals and their habitats

3. **When did Sir David Attenborough start working at the BBC? Tick one.**

- ☐ in 1965
- ☐ in 2019
- ☐ in 1952

4. **What was the name of his first TV show? Tick one.**

- ☐ 'Amazing Animals'
- ☐ 'Animal Patterns'
- ☐ 'Life on Earth'

5. **What did people learn from watching 'Blue Planet 2'? Tick one.**

- ☐ They learnt about plastic pollution.
- ☐ They learnt about the patterns of many amazing animals.
- ☐ They learnt how to use a TV.

6. When is Sir David Attenborough's birthday? Tick one

☐ 6th July

☐ 8th May

☐ 10th June

Find and type in a word which means:

7. How an animal moves or acts.
8. The air, water, and land in or on which people, animals, and plants live.
9. The natural environment in which an animal or plant usually lives.

