

Lesson 4 Read and respond

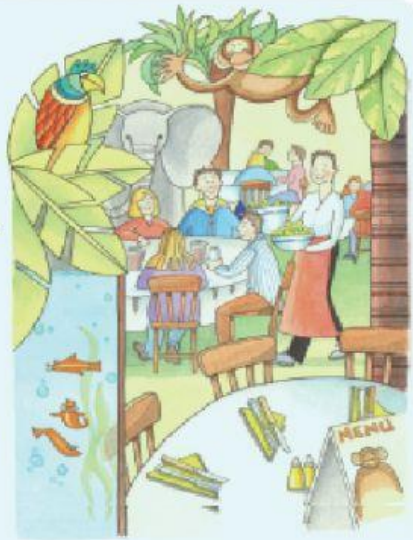
126 1 Before you read

127 Look at the pictures. Now close your eyes and listen to a café. Which picture was it? Read and choose which café you would like to go to.

Cafés

The Jungle Café

This café is in a town. The café is inside a building, but it looks like a jungle! You can hear jungle birds and insects. You can see some jungle animals and some fish. There is a menu for adults and a menu for children. The food is delicious!



The Tree House Café

This café is in the countryside. The café is outside. In fact, it's in a tree house! To get to the café, you walk up some stairs, and then you climb up a ladder. You can see a lovely view. You can hear birds in the branches. You can sit and look up at the trees or down at the ground. The café is open in summer and closed in winter.



Lesson 4 Read and respond

1 Which café?

Read the sentences. Write **Jungle Café**, **Tree House Café**, or **Both cafés**.

- 1 It is inside a building. Jungle Café
- 2 It is closed in winter. _____
- 3 You can hear birds there. _____
- 4 You must climb up a ladder to get there. _____
- 5 You can see leaves and branches. _____
- 6 You can watch the fish. _____