

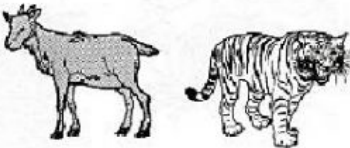
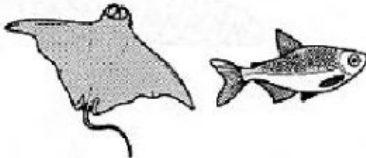

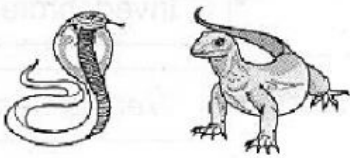

**SCIENCE YEAR 4 (UNIT 3 : VERTEBRATES & INVERTEBRATES)**

**INSTRUCTION : FILL IN THE BLANK WITH THE CORRECT ANSWER**

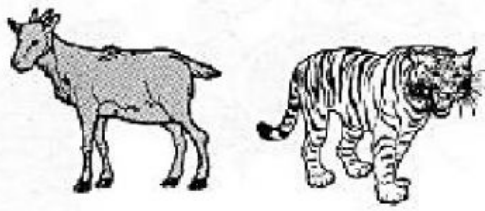
4. The table below shows the classification of vertebrates animal. LS3.2.3



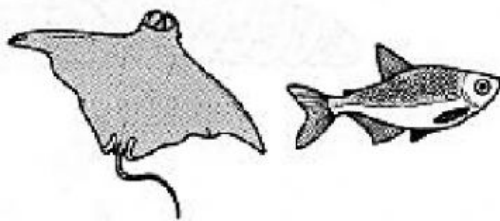
(a) Complete the table with the correct characteristics.

Group of animals	Characteristics
 Group P	i. _____ blooded ii. Breathe through their _____ iii. Breed by _____ iv. Body covered with _____
 Group Q	i. _____ blooded ii. Breathe through the _____ iii. Breed by _____ iv. Body covered with _____ and have _____
 Group R	i. _____ blooded ii. Breathe through the _____ iii. Breed by _____ iv. Body covered with _____ and _____
 Group S	i. _____ blooded ii. Breathe through their _____ iii. Breed by _____ iv. Body covered with _____
 Group T	i. _____ blooded ii. Breathe through their _____ and _____ iii. Breed by _____ iv. Live in _____ and on _____

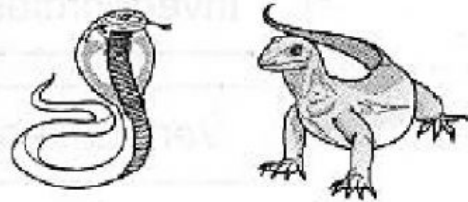
**SCIENCE YEAR 4 (UNIT 3 : VERTEBRATES & INVERTEBRATES)**



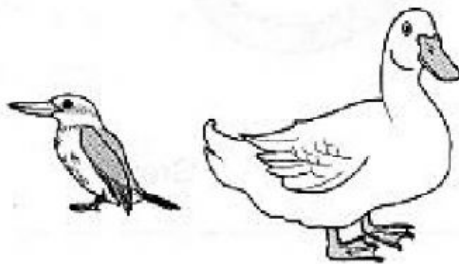
Group P



Group Q



Group S



Group R



Group T

(b) Name the following groups.

Group P: \_\_\_\_\_

Group S: \_\_\_\_\_

Group Q: \_\_\_\_\_

Group T: \_\_\_\_\_

Group R: \_\_\_\_\_