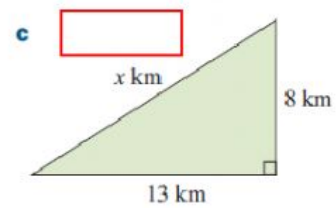
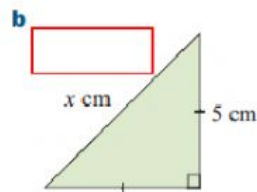
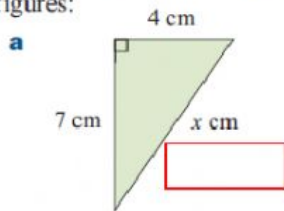
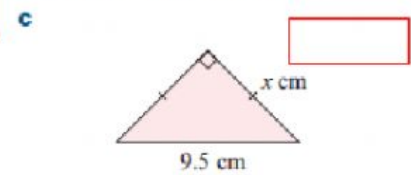
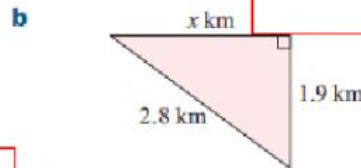
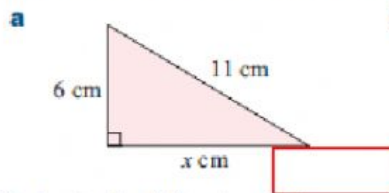


HOMEWORK 3.1

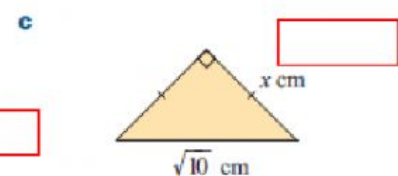
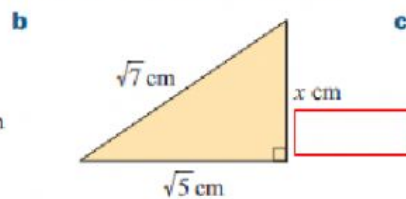
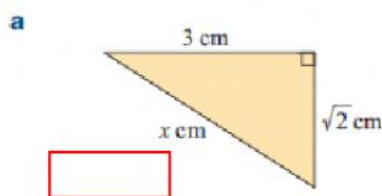
- 1 Find the length of the hypotenuse in the following triangles, giving your answers correct to 3 significant figures:



- 2 Find the length of the third side these triangles, giving your answers correct to 3 significant figures:



- 3 Find x in the following, giving your answers in simplest surd form:



4. Find the diagonal length of a square field os side 50 m.

5. A fishing boat sails from Bastia in Corsica. It travels 15 km due east, then 25 km due south. It then returns directly to its starting point. What is the total distance the boat travels?

