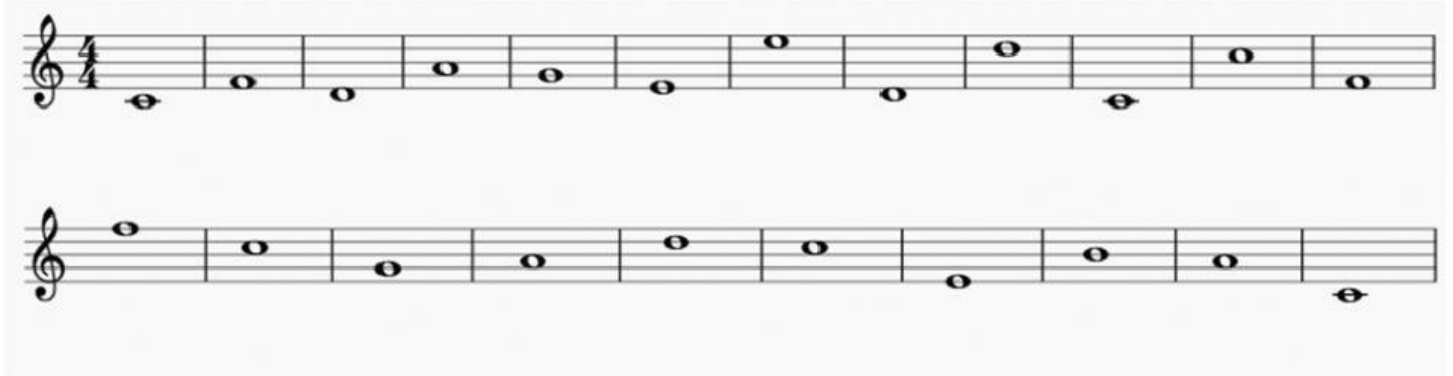
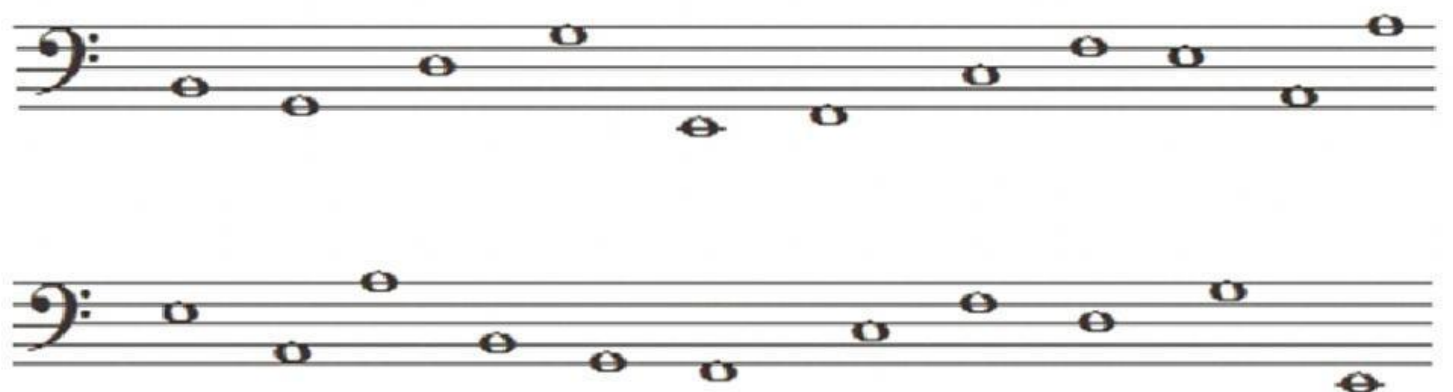


Unit 1 Musical Language Review

Exercise 1: Put the name under the notes in treble clef in 2nd.



Exercise 2: Put the name under the bass clef notes in 4th.



Exercise 3: Complete these progressions taking the semibreve as the unit of measure:

a)

$\frac{1}{\text{semibreve}}$	$\frac{2}{\text{minim}}$	$\frac{4}{\text{crotchet}}$	$\frac{8}{\text{quaver}}$
------------------------------	--------------------------	-----------------------------	---------------------------

b)

semibreve	=	
minim	=	
crotchet	=	
quaver	=	

Exercise 4: Join with arrows the number that corresponds to these figures and vice versa, taking the semibreve as the unit of measure:



4

1



16

2



2

4



8

8



Exercise 5: Two incorrect measures have been deliberately included in this 4/4 musical phrase. Indicate which ones are **OK** and which ones are **WRONG**:

Exercise 6: In this exercise there are two wrongly placed bar lines. Put a cross (an X) on the corresponding numbers.

Exercise 7: Drag the music fragments to their respective bars. Remember that those fragments whose sum of the values of their musical notes add up to 2 will be entered in the boxes of the measure of 2/4. In 3/4, those that the sum of the values of their notes add up to 3 will be entered.

2 4						



3 4				

Exercise 8: Being the unit of time the crotchet, how many times are the following figures worth.

a  equals _____ beats

a  equals _____ beats

a  equals _____ beats

a  equals _____ beats

Exercise 9: Drag snippets under the corresponding measure in the example below, replacing the tie with a dot where possible.

