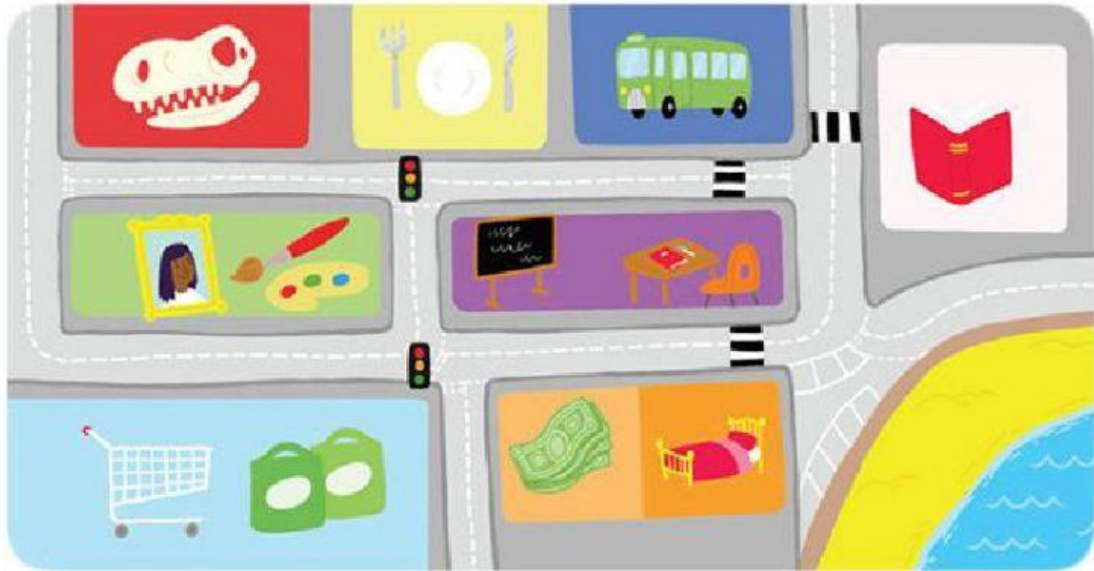


UNIT 2 VOCABULARY: WHERE IS IT?

I. LOOK AND COMPLETE THE QUESTIONS AND ANSWERS.



next to - far from - opposite - Where's

1. Where's the bank?

It's next to the hotel.

2. Where's the art gallery?

It's _____ the museum.

3. _____ the shopping centre?

It's _____ the book shop.

4. _____ the restaurant?

It's _____ the bus station.