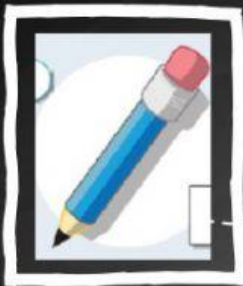
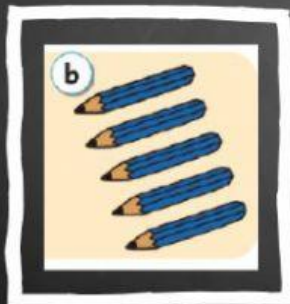


More questions! ≤



WHAT'S THIS?
IT'S A PENCIL.

WHAT COLOUR IS IT?
IT'S BLUE AND PINK.



WHAT ARE THESE?
THEY ARE PENCILS.

WHAT COLOUR ARE THEY?
THEY ARE BLUE.



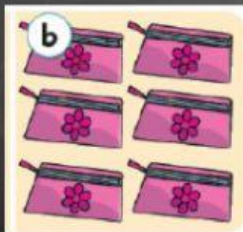
Activar Windows
Vea Configuración para activar Windows.

LET'S PRACTISE! ≤



WHAT'S THIS?
IT'S A PENCIL CASE. / THEY ARE PENCIL CASES.

WHAT COLOUR IS IT?
IT'S BROWN AND YELLOW. / THEY'RE BROWN AND YELLOW.



WHAT ARE THESE?
IT'S A PENCIL CASE. / THEY ARE PENCIL CASES.

WHAT COLOUR ARE THEY?
IT IS PINK. / THEY ARE PINK.



Activar Windows
Vea Configuración para activar Windows.



WHAT'S THIS?
IT'S A RUBBER. / THEY ARE RUBBERS.

WHAT COLOUR IS IT?
IT'S GREEN AND BROWN. / THEY'RE GREEN AND BROWN.



WHAT ARE THESE?
IT'S A RUBBER. / THEY ARE RUBBERS.

WHAT COLOUR ARE THEY?
THEY ARE YELLOW AND WHITE. / IT IS YELLOW AND WHITE.

Activar Windows
Vea Configuración para activar Windows.



WHAT'S THIS?
IT'S A CHAIR. / THEY ARE CHAIRS.

WHAT COLOUR IS IT?
IT'S YELLOW AND BROWN. / THEY'RE YELLOW AND BROWN.



WHAT ARE THESE?
IT'S A CHAIR. / THEY ARE CHAIRS.

WHAT COLOUR ARE THEY?
IT IS PURPLE AND BROWN. / THEY ARE PURPLE AND BROWN.

Activar Windows
Vea Configuración para activar Windows.