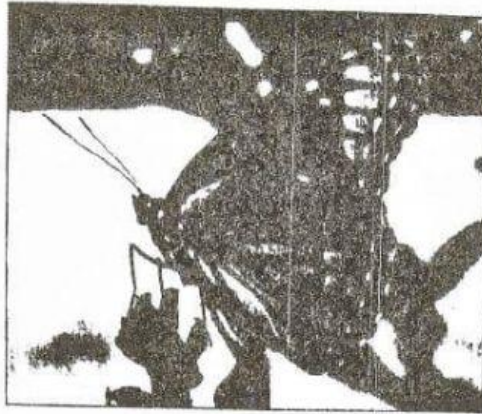


## Set 1

Read the text, 'Butterflies'. Pay attention to the underlined phrases/sentences. They are important points to be highlighted.

Read the text below and answer questions 1 – 10.

### Butterflies



Butterflies play an important role in the environment. They are agents of pollination and therefore, they help to sustain the production of plants which are sources of food for people and animals.

A butterfly undergoes a few stages of growth. After the male and female butterflies mate, the female butterfly lays eggs on the underside of the leaves. A female butterfly can lay up to a few hundred eggs at one time. The eggs hatch into caterpillars after four days.

The caterpillars are very hungry, so they eat the leaves of the plants. They later grow to an inch long with legs on both sides. Now, they can eat a whole leaf in less than an hour!

The caterpillar moves fast to look for a place to spin a cocoon that is attached to the leaf. Once this is done, the skin splits behind the caterpillar's head and it wiggles out from the old skin. The caterpillar has now become a pupa.

The pupa stays in this stage for two weeks because of the many changes that take place inside the shell of the pupa. The shell of the pupa hardens to protect the butterfly that is growing inside.

Finally, the shell bursts open and a butterfly emerges. It takes a couple of hours before it can fly because its wings are tiny, wet and wrinkly. The butterfly pumps body fluid into the wings to make them grow big and strong. After the wings have hardened, the butterfly flies off in search of its first meal. It rests on the flowers and uses its straw-like tongue to suck the nectar. This is the reason why butterflies are attracted to all types of flowers.

**Questions 1 – 8**

Answer the questions below.

Choose **no more than five words and/or a number** from the text for each answer.

For each question, write your answer in the space provided.

1 The role of butterflies as \_\_\_\_\_ is to sustain the production of plants. [1 mark]

2 What happens after the male and female butterflies mate?  
\_\_\_\_\_ [1 mark]

3 Four days later, the eggs \_\_\_\_\_ [1 mark]

4 What does the caterpillar eat?  
\_\_\_\_\_ [1 mark]

5 Before becoming a pupa, the caterpillar \_\_\_\_\_ around itself. [1 mark]

6 The shell of the pupa is hard \_\_\_\_\_ that is going through many changes inside it. [1 mark]

7 When can the butterfly start to fly?  
\_\_\_\_\_ [1 mark]

8 The butterfly feeds on \_\_\_\_\_ [1 mark]

**Questions 9 and 10**

Complete the table below with a word from the text.

For each question, write your answer in the space provided on your answer sheet.

Meaning	Word	
9 from which something can be obtained		[1 mark]
10 liquid		[1 mark]

[10 marks]

Choose the correct answers to fill in the blanks.

source	After the wings have hardened
agents of pollination	The female butterfly lays eggs
The leaves of the plants	hatch into caterpillars
nectar	fluids
to protect the butterfly	They eat a whole leaf
spins a cocoon	all types of flowers