

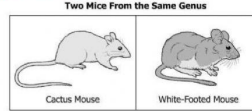
31 of 48

																		H																												He																																																																																																																																																																																																																																																																																																																																																																																																																																																																																																																																																																																																																																																																																																																																																																																																																																																																																																																																																																																																																																																																																																																																																																																																																																																																																																																																																																																																																																																																																																																																																																																																																																																																																																																																																																											
1																		2																		3		4																		5		6		7		8		9		10																																																																																																																																																																																																																																																																																																																																																																																																																																																																																																																																																																																																																																																																																																																																																																																																																																																																																																																																																																																																																																																																																																																																																																																																																																																																																																																																																																																																																																																																																																																																																																																																																																																																																																																																																							
H																		He																		Li		Be																		B		C		N		O		F		Ne																																																																																																																																																																																																																																																																																																																																																																																																																																																																																																																																																																																																																																																																																																																																																																																																																																																																																																																																																																																																																																																																																																																																																																																																																																																																																																																																																																																																																																																																																																																																																																																																																																																																																																																																																							
3																		4																		5		6																		7		8		9		10		11		12																																																																																																																																																																																																																																																																																																																																																																																																																																																																																																																																																																																																																																																																																																																																																																																																																																																																																																																																																																																																																																																																																																																																																																																																																																																																																																																																																																																																																																																																																																																																																																																																																																																																																																																																																							
6.5																		7																		8		9																		10		11		12		13		14																																																																																																																																																																																																																																																																																																																																																																																																																																																																																																																																																																																																																																																																																																																																																																																																																																																																																																																																																																																																																																																																																																																																																																																																																																																																																																																																																																																																																																																																																																																																																																																																																																																																																																																																																									
Na																		Mg																		Al		Si		P		S		Cl		Ar		K		Ca		Sc		Ti		V		Cr		Mn		Fe		Co		Ni		Cu		Zn		Ga		Ge		As		Se		Br		Kr																																																																																																																																																																																																																																																																																																																																																																																																																																																																																																																																																																																																																																																																																																																																																																																																																																																																																																																																																																																																																																																																																																																																																																																																																																																																																																																																																																																																																																																																																																																																																																																																																																																																																																																																							
19																		20																		21		22																		23		24		25		26		27		28		29		30		31		32		33		34		35		36																																																																																																																																																																																																																																																																																																																																																																																																																																																																																																																																																																																																																																																																																																																																																																																																																																																																																																																																																																																																																																																																																																																																																																																																																																																																																																																																																																																																																																																																																																																																																																																																																																																																																																																																							
K																		Ca																		Sc		Ti		V																		24		25		26		27		28		29		30		31		32		33		34		35		36																																																																																																																																																																																																																																																																																																																																																																																																																																																																																																																																																																																																																																																																																																																																																																																																																																																																																																																																																																																																																																																																																																																																																																																																																																																																																																																																																																																																																																																																																																																																																																																																																																																																																																																																							
37																		38																		39		40																		41		42		43		44		45		46		47		48		49		50		51		52		53		54																																																																																																																																																																																																																																																																																																																																																																																																																																																																																																																																																																																																																																																																																																																																																																																																																																																																																																																																																																																																																																																																																																																																																																																																																																																																																																																																																																																																																																																																																																																																																																																																																																																																																																																																							
Rb																		Sr																		Y		Zr		Nb																		44		45		46		47		48		49		50		51		52		53		54																																																																																																																																																																																																																																																																																																																																																																																																																																																																																																																																																																																																																																																																																																																																																																																																																																																																																																																																																																																																																																																																																																																																																																																																																																																																																																																																																																																																																																																																																																																																																																																																																																																																																																																																											
55																		56																		57		58																		59		60		61		62		63		64		65		66		67		68		69		70		71		72		73		74		75		76		77		78		79		80		81		82		83		84		85		86																																																																																																																																																																																																																																																																																																																																																																																																																																																																																																																																																																																																																																																																																																																																																																																																																																																																																																																																																																																																																																																																																																																																																																																																																																																																																																																																																																																																																																																																																																																																																																																																																																																																																																											
Cs																		Ba																		La		Ce																		62		63		64		65		66		67		68		69		70		71		72		73		74		75		76		77		78		79		80		81		82		83		84		85		86																																																																																																																																																																																																																																																																																																																																																																																																																																																																																																																																																																																																																																																																																																																																																																																																																																																																																																																																																																																																																																																																																																																																																																																																																																																																																																																																																																																																																																																																																																																																																																																																																																																																																																																	
87																		88																		89		90																		91		92		93		94		95		96		97		98		99		100		101		102		103		104		105		106		107		108		109		110		111		112		113		114		115		116		117		118																																																																																																																																																																																																																																																																																																																																																																																																																																																																																																																																																																																																																																																																																																																																																																																																																																																																																																																																																																																																																																																																																																																																																																																																																																																																																																																																																																																																																																																																																																																																																																																																																																																																																																											
Fr																		Ra																		Ac		Th																		92		93		94		95		96		97		98		99		100		101		102		103		104		105		106		107		108		109		110		111		112		113		114		115		116		117		118																																																																																																																																																																																																																																																																																																																																																																																																																																																																																																																																																																																																																																																																																																																																																																																																																																																																																																																																																																																																																																																																																																																																																																																																																																																																																																																																																																																																																																																																																																																																																																																																																																																																																																													
105																		106																		107		108																		109		110		111		112		113		114		115		116		117		118		119		120		121		122		123		124		125		126		127		128		129		130		131		132		133		134		135		136		137		138		139		140		141		142		143		144		145		146		147		148		149		150		151		152		153		154		155		156		157		158		159		160		161		162		163		164		165		166		167		168		169		170		171		172		173		174		175		176		177		178		179		180		181		182		183		184		185		186		187		188		189		190		191		192		193		194		195		196		197		198		199		200		201		202		203		204		205		206		207		208		209		210		211		212		213		214		215		216		217		218		219		220		221		222		223		224		225		226		227		228		229		230		231		232		233		234		235		236		237		238		239		240		241		242		243		244		245		246		247		248		249		250		251		252		253		254		255		256		257		258		259		260		261		262		263		264		265		266		267		268		269		270		271		272		273		274		275		276		277		278		279		280		281		282		283		284		285		286		287		288		289		290		291		292		293		294		295		296		297		298		299		300		301		302		303		304		305		306		307		308		309		310		311		312		313		314		315		316		317		318		319		320		321		322		323		324		325		326		327		328		329		330		331		332		333		334		335		336		337		338		339		340		341		342		343		344		345		346		347		348		349		350		351		352		353		354		355		356		357		358		359		360		361		362		363		364		365		366		367		368		369		370		371		372		373		374		375		376		377		378		379		380		381		382		383		384		385		386		387		388		389		390		391		392		393		394		395		396		397		398		399		400		401		402		403		404		405		406		407		408		409		410		411		412		413		414		415		416		417		418		419		420		421		422		423		424		425		426		427		428		429		430		431		432		433		434		435		436		437		438		439		440		441		442		443		444		445		446		447		448		449		450		451		452		453		454		455		456		457		458		459		460		461		462		463		464		465		466		467		468		469		470		471		472		473		474		475		476		477		478		479		480		481		482		483		484		485		486		487		488		489		490		491		492		493		494		495		496		497		498		499		500		501		502		503		504		505		506		507		508		509		510		511		512		513		514		515		516		517		518		519		520		521		522		523		524		525		526		527		528		529		530		531		532		533		534		535		536		537		538		539		540		541		542		543		544		545		546		547		548		549		550		551		552		553		554		555		556		557		558		559		560		561		562		563		564		565		566		567		568		569		570		571		572		573		574		575		576		577		578		579		580		581		582		583		584		585		586		587		588		589		590		591		592		593		594		595		596		597		598		599		600		601		602		603		604		605		606		607		608		609		610		611		612		613		614		615		616		617		618		619		620		621		622		623		624		625		626		627		628		629		630		631		632		633		634		635		636		637		638		639		640		641		642		643		644		645		646		647		648		649		650		651		652		653		654		655		656		657		658		659		660		661		662		663		664		665		666		667		668		669		670		671		672		673		674		675		676		677		678		679		680		681		682		683		684		685		686		687		688		689		690		691		692		693		694		695		696		697		698		699		700		701		702		703		704		705		706		707		708		709		710		711		712		713		714		715		716		717		718		719		720		721		722		723		724		725		726		727		728		729		730		731		732		733		734		735		736		737		738		739		740		741		742		743		744		745		746		747		748		749		750		751		752		753		754		755		756		757		758		759		760		761		762		763		764		765		766		767		768		769		770		771		772		773		774		775		776		777		778		779		780		781		782		783		784		785		786		787		788		789		790		791		792		793		794		795		796		797		798		799		800		801		802		803		804		805		806		807		808		809		810		811		812		813		814		815		816		817		818		819		820		821		822		823		824		825		826		827		828		829		830		831		832		833		834		835		836		837		838		839		840		841		842		843		844		845		846		847		848		849		850		851		852		853		854		855		856		857		858		859		860		861		862		863		864		865		866		867		868		869		870		871		872		873		874		875		876		877		878		879		880		881		882		883		884		885		886		887		888		889		890		891		892		893		894		895		896		897		898		899		900		901		902		903		904		905		906		907		908		909		910		911		912		913		914		915		916		917		918		919		920		921		922		923		924		925		926		927		928		929		930		931		932		933		934		935		936		937		938		939		940		941		942		943		944		945		946		947		948		949		950		951		952		953		954		955		956		957	

The shaded row in the table is called a —

- ☐ A column Which way does a column go?
- ☐ B family Families and groups are the same thing, so these can't be right.
- ☐ C group Which way do the Periods go?
- ☐ D period

32 of 48



When there is a picture, LOOK CLOSELY AT IT.

White-footed mice having thicker fur than cactus mice is probably influenced most by the differences in the — Where do Cactus Grow?

- ☐ A food that they eat
- ☐ B time of day they are active
- ☐ C environmental climates where they live
- ☐ D amount of predators they encounter

33 of 48 During human fertilization, an egg and a sperm cell unite. Which structures in these cells carry the genes that will be transferred to the offspring?

- ☐ A Vacuoles
- ☐ B Ribosomes
- ☐ C Chromosomes
- ☐ D Cell membranes

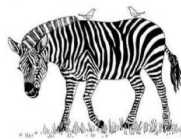
34 of 48 Which facility relies on a nonrenewable source of energy? Nonrenewable - doesn't come back.

- ☐ A A wind farm that uses wind turbines Does the wind come back, will there be more?
- ☐ B A dam that uses the power of water Will there be more water?
- ☐ C A power station that burns coal Will there be more coal?
- ☐ D A solar farm that collects sunlight Will there be more sunlight?

35 of 48 As the frequency of a wave decreases, the wave's — Means - waves per second go down.

- ☐ A period decreases
- ☐ B amplitude increases
- ☐ C speed decreases
- ☐ D wavelength increases

36 of 48



This picture shows a zebra with two tick birds on its back. The tick birds alert the zebras that predators are near as well as remove and eat ticks found on zebras. What is the primary type of interaction between the tick birds and the zebras? So do the ticks help or hurt the Zebra? Does eating the ticks, (getting food) help the bird?

- ☐ A Mutualism Mutual - both
- ☐ B Parasitism What is a parasite?
- ☐ C Competition They compete, like when you compete against another team in a sport.
- ☐ D Commensalism One gets help, the other is not hurt or helped. Even if you don't remember this you should have gotten the answer already.

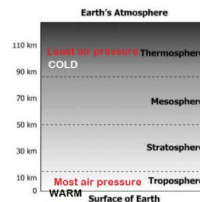
37 of 48 Which change will most likely increase the strength of a magnetic field produced by an electromagnet?

- ☐ A Reduce the number of turns of the coil
- ☐ B Switch the direction in which the battery is connected Only one key word means increase.
- ☐ C Remove the iron nail
- ☐ D Add a battery

38 of 48 The physical expression of a trait in an organism is known as the — This one is hard, you have to remember.

- ☐ A chromosome A DNA molecule
- ☐ B genotype the complete set of genetic material, which genes you have, some are dominate some are recessive.
- ☐ C phenotype the observable trait, like blue eyes or brown.
- ☐ D double helix has the DNA, Half of the helix is from mom, the other from dad, that's why it is double.

39 of 48



Which statement correctly describes a difference between the mesosphere and the stratosphere?

- ☐ A The mesosphere has more active weather than the stratosphere. higher lower
- ☐ B The mesosphere contains fewer oxygen molecules than the stratosphere.
- ☐ C Air pressure is lower in the stratosphere than in the mesosphere.
- ☐ D Temperatures decrease with altitude only in the stratosphere.

You can get rid of two answers

40 of 48 Which organisms are producers in this food web? Which ones make food, all the others are eaters (consumers)

