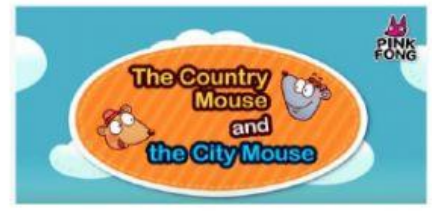
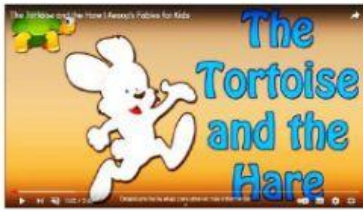


# Let's remember the fables



## Read and choose the best answer

a) WHO RAN A RACE?



b) WHO WORKED IN THE SUMMER?



c) WHO LIVED IN A FARM?



d) DID THE HARE WIN THE RACE?

YES, IT DID.

NO, IT DIDN'T.



e) DID THE GRASSHOPPER WORK IN THE SUMMER?

YES, IT DID.

NO, IT DIDN'T.



f) DID THE ANT HELP THE GRASSHOPPER IN WINTER?

YES, IT DID.      NO, IT DIDN'T.



g) DID THE CITY MOUSE LIKE THE COUNTRY MOUSE'S FOOD?

YES, IT DID.      NO, IT DIDN'T.



h) DID THE COUNTRY MOUSE LIKE THE CITY?

YES, IT DID.      NO, IT DIDN'T.