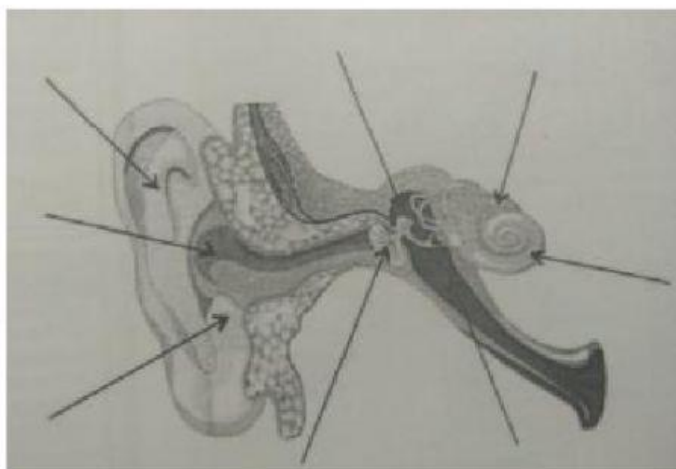


Label the parts of the ear!



1. Pinna
2. Cochlea
3. Ear drum
4. Middle ear
5. Ear canal

- a. A structure consisting of three bones
- b. The outer visible part of ear, which help in funneling sound waves inside the ear.
- c. The passage from where sound waves pass through and reach the ear drum.
- d. The part that coverts sound waves in signals for the brain.
- e. A thin that vibrates on receiving sound

1. What is a to-and-fro movement about a fixed position called?
  - a. Sound
  - b. Vibration
  - c. Vacuum
  - d. Frequency
2. Through which of the following can sound not travel?
  - a. Solids
  - b. Liquids
  - c. Gases
  - d. Vacuum
3. Which of the following is the unit of intensity of sound?
  - a. Hertz
  - b. Second
  - c. Decibel
  - d. Centimetre
4. Which of the following is the degree of highness or lowness of sound?
  - a. Amplitude
  - b. Echo
  - c. Pitch
  - d. Compression
5. This is a thin layer-like structure in the ear that vibrates on receiving sounds.
  - a. Cochlea
  - b. Eardrum
  - c. Pinna
  - d. Ear canal
6. This is the visible part of the ear.
  - a. Pinna
  - b. Malleus
  - c. Incus
  - d. Stapes

