

1. **Join with arrows** (click on the name and drag to the picture).

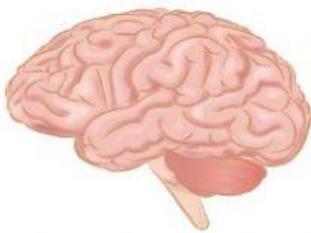


SKULL

RIBS

SPINAL COLUMN

2. **Join with arrows the parts of the brain and choose the right answer to describe the action each part controls.**



CEREBELLUM

It controls coordination and balance

It controls involuntary actions

It controls voluntary actions

CEREBRUM

It controls coordination and balance

It controls involuntary actions

It controls voluntary actions

BRAIN STEM

It controls coordination and balance

It controls involuntary actions

It controls voluntary actions

3. Join with arrows the parts of the eye.



EYEBROW

EYELID

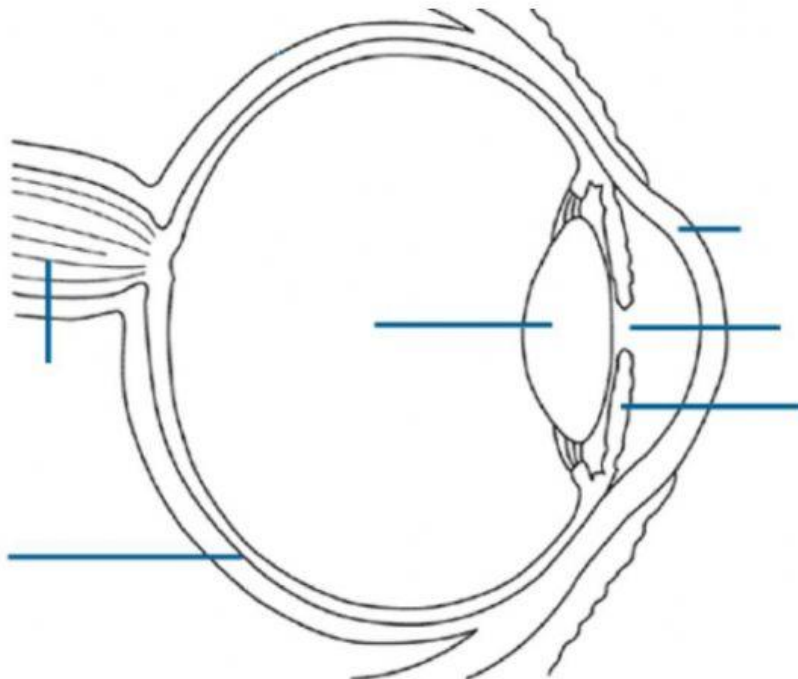
IRIS

EYELASHES

PUPIL

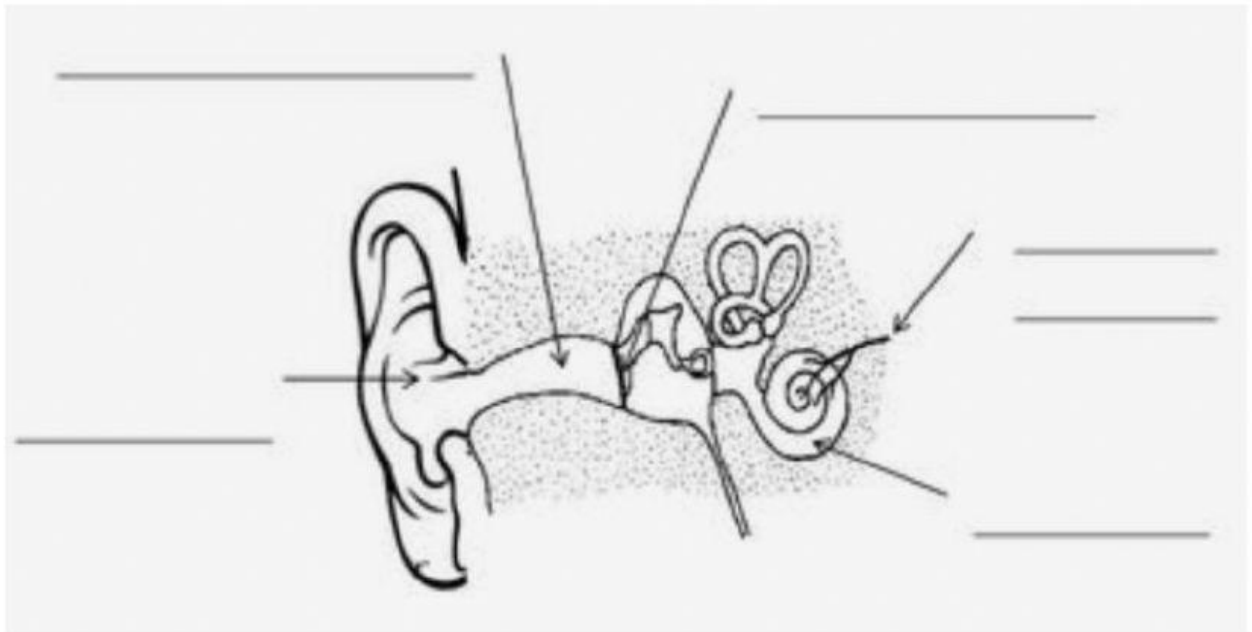
4. Write the name of each part of the eye (drag the words).

IRIS PUPIL RETINA LENS NERVE CORNEA



5. Label the parts of the ear

NERVE OUTER EAR EARDRUM MIDDLE EAR COCHLEA



6. Complete the text (by choosing the right word/s):

Our senses of _____ and _____ are connected.

SMELL

- Air enters the _____ through two holes called the _____.
- The _____ nerve detects the smells and sends the information to the _____.

TASTE

- Tiny taste _____ on the _____ identify different tastes: sour, _____, salty and bitter.
- This information is sent to the _____ via the _____.

7. Choose the right answer for each question.

a) What is the control center of the nervous system?

Heart

Brain

Lungs

b) Which word is missing?

Bones, joints and brain internal organs muscles make up the locomotor system.

c) What carries information from our sense organs to the brain?

Nerves

Muscles

Skin

8. Drag:

MUSCLES

BONES

