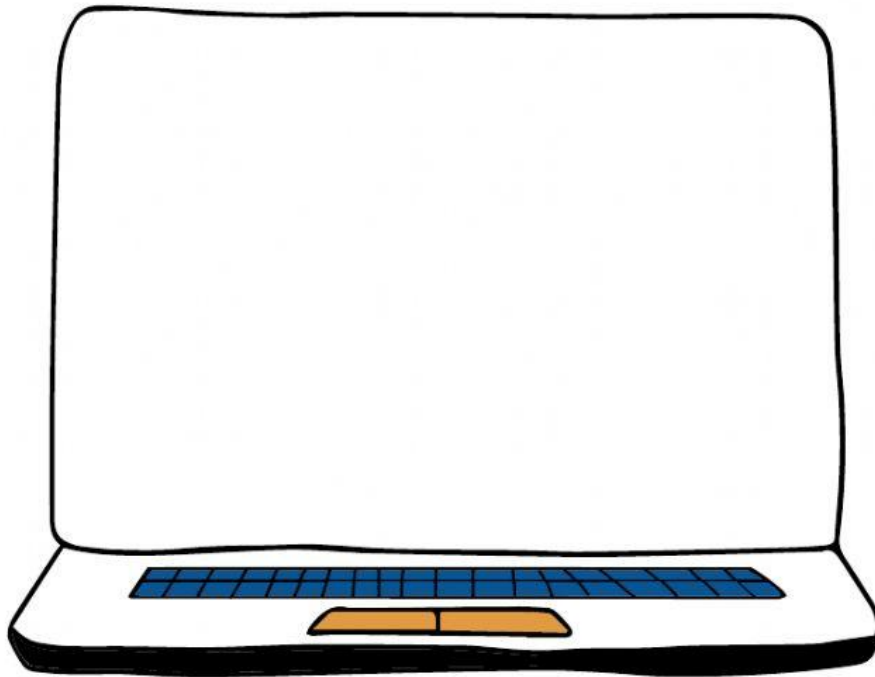


THE PERCENT PROPORTION



$$\frac{\text{part}}{\text{whole}} = \frac{\%}{100}$$

percent: always has a "%" or the word "percent" after it

whole: always comes right after the percent "percent of the whole"

part: the leftover number (if there are no more numbers, this is your variable.)

For each problem, identify the part, whole, and percent.

1. What percent of 200 is 28?

percent =

whole =

part =

2. 161 is 46% of what amount?

percent =

whole =

part =

3. What is 35% of 140?

percent =

whole =

part =

4. 27 out of 50 is what percent?

percent =

whole =

part =