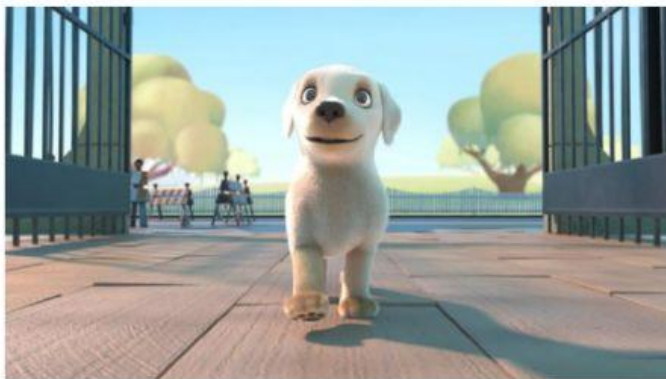


PRE-WATCHING ACTIVITIES: (ANTES DE VER EL VIDEO)



- A. GUESS: (ADIVINA)
- WHAT ANIMAL IS IT?
 1. IT'S A CAT.
 2. IT'S A DOG.
 3. IT'S A LION.

 - WHAT COLOUR IS THE PUPPY?
 1. THE PUPPY IS WHITE.
 2. THE PUPPY IS BLACK.
 3. THE PUPPY IS YELLOW.

 - WHERE DOES THE PUPPY GO?
 1. THE PUPPY GOES TO THE HOSPITAL.
 2. THE PUPPY GOES TO THE SUPERMARKET.
 3. THE PUPPY GOES TO THE CANINE UNIVERSITY.

WATCH THE VIDEO: <https://www.youtube.com/watch?v=07d2dXHYb94>

POST WATCHING ACTIVITIES:

B) Decide if these statements are true or false and then, check with the summary and the film.

- 1) The short film is about a dog and its owner.
- 2) It is an animated film.
- 3) It is set in a park.
- 4) The protagonist is a bright animal.

C) Complete the plot summary to find out information about the short film you are going to watch.

DOG - PEOPLE - SCHOOL - FILM - PUPPY - VETERANS - ORGANISATION

"A small 1) _____ with a big dream"

Pip is about a 2) _____ who starts attending a special 3) _____. This institution teaches dogs how to guide 4) _____ who cannot see or have other disabilities.

This animated short 5) _____ was presented by Southeastern Guide Dogs, a non-profit 6) _____ which trains dogs to assist people with vision loss and 7) _____ with disabilities.