

Name:

Date:

Fractions

Fourth Grade - Teacher Begonia

Comparing Fractions

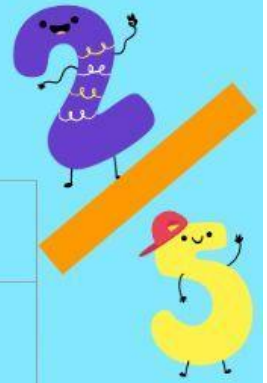
All fractions have value. You can compare two or more fractions using the following symbols.

>

<

=

Comparing Fractions



Greater Than	Less Than	Equal To

Drag the symbol in the corresponding box.



Comparing Fractions

Same **denominator** compare numerators

$$\frac{3}{5} < \frac{4}{5}$$

The larger numerator is the **greater fraction**.

Write the corresponding relationship between the fractions
greater than >, less than <, or equal to =.

$$\frac{5}{15} \quad \square \quad \frac{8}{15}$$

$$\frac{3}{8} \quad \square \quad \frac{2}{8}$$

$$\frac{5}{6} \quad \square \quad \frac{4}{6}$$

Comparing Fractions



Same **numerators** compare denominators

$$\frac{3}{6} > \frac{3}{8}$$

The **smaller denominator** is the **greater fraction**.

Write the corresponding relationship between the fractions greater than >, less than <, or equal to =.

$$\frac{5}{12} \square \frac{5}{8}$$

$$\frac{2}{5} \square \frac{2}{9}$$

$$\frac{4}{16} \square \frac{4}{6}$$