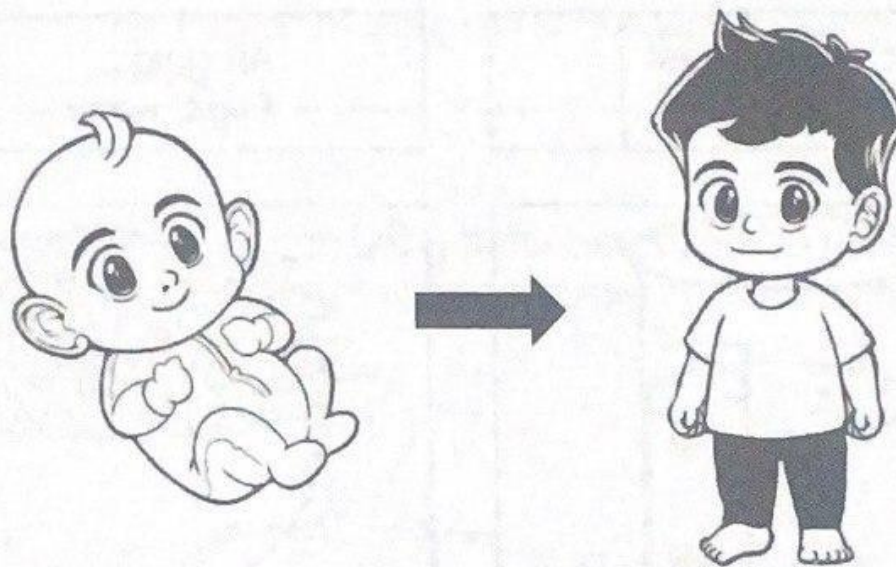


Bahagian A
[10 markah]
Jawab semua soalan.

1. Gambar di bawah menunjukkan dua peringkat manusia.
The diagram below shows two stages of human.



Apakah yang ditunjukkan dalam gambar di atas?
What is shown in the above diagram?

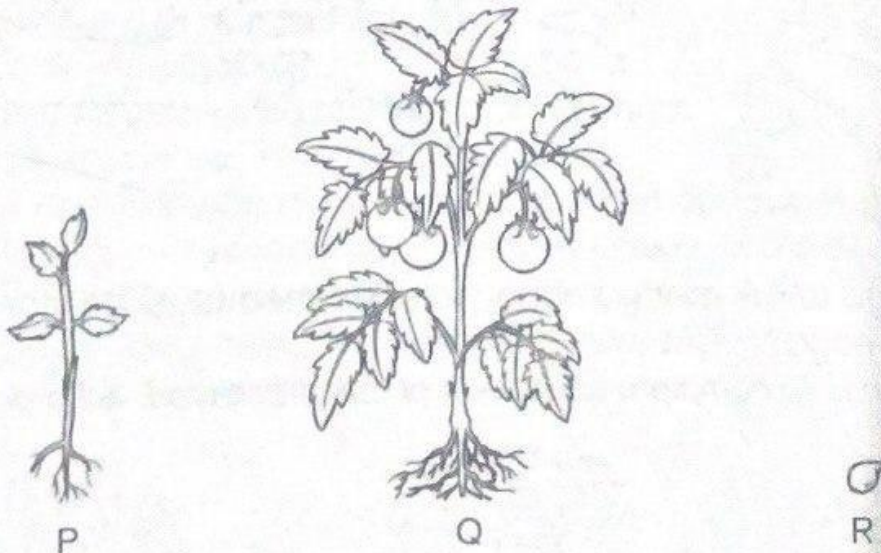
- A Manusia membiak
Humans reproduce
- B Manusia membesar
Humans grow
- C Manusia mewarisi ciri daripada keturunan
Humans inherit features from their ancestors
2. Apakah maksud pewarisan?
What is the meaning of inheritance?
- A Proses mempelajari sesuatu.
The process of learning something.
- B Proses manusia mengubah warna kulit.
The process of humans changing skin colour.
- C Ciri-ciri yang diwarisi daripada ibu, bapa atau keturunan.
Features inherited from parents or ancestors.

3. Gambar di bawah menunjukkan seekor anak kucing dan ibunya.
The diagram below shows a kitten and its mother.



Apakah yang kamu perhatikan dalam gambar di atas?
What do you observe in the above diagram?

- A Anak kucing dan ibunya serupa
The kitten and its mother are similar
- B Anak kucing dan ibunya berbeza
The kitten and its mother are different
- C Anak kucing dan ibunya tidak berkaitan
The kitten and its mother are unrelated
4. Gambar di bawah menunjukkan tiga peringkat tumbesaran pokok tomat.
The diagram below shows the three stages of tomato plant growth.



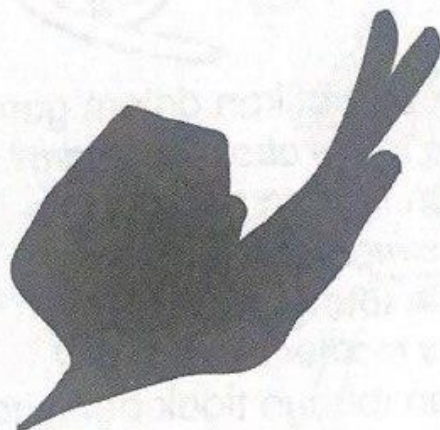
Urutan peringkat tumbesaran yang manakah betul?
Which sequence of growth stages is correct?

- A P → Q → R B Q → R → P C R → P → Q

5. Apakah sumber utama cahaya?
What is the main source of light?

- A Api
Fire
- B Lampu
Lamps
- C Matahari
Sun

6. Gambar di bawah menunjukkan satu bayang-bayang seni tangan.
The diagram below shows a hand shadow play.

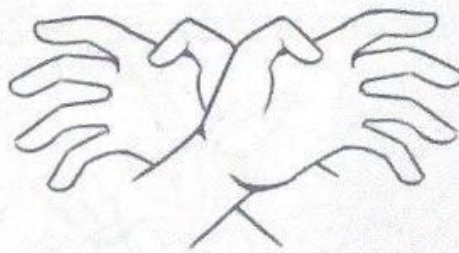


Tangan yang manakah menghasilkan bayang-bayang di atas?
Which hands produce the above shadow?

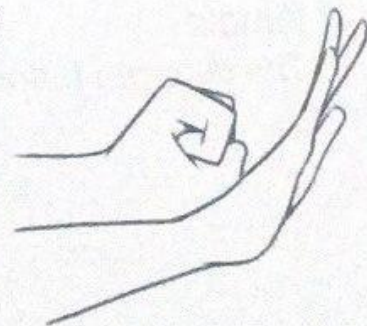
A



B



C



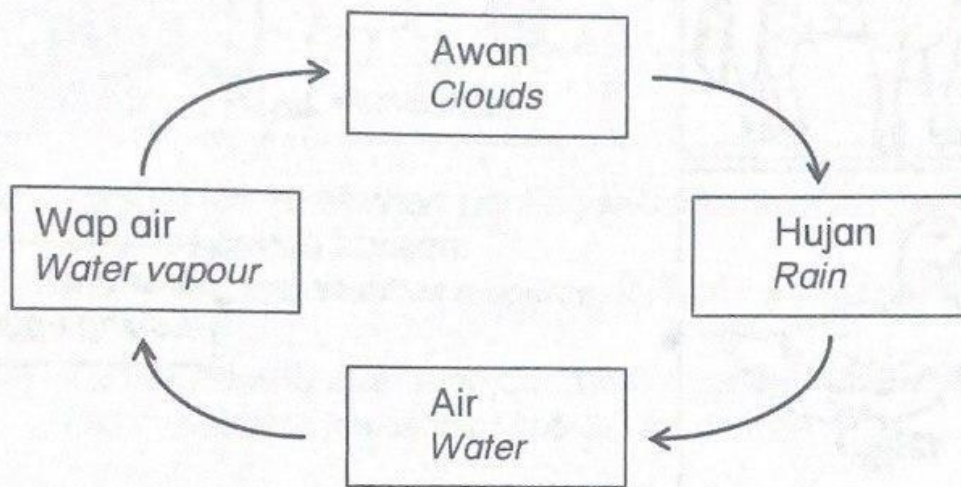
7. Tugas saya untuk menyambungkan dan memutuskan litar elektrik.
Siapakah saya?

My function is to complete and break an electric circuit. Who am I?

- A Suis
Switch
- B Mentol
Bulb
- C Sel kering
Dry cell

8. Apakah yang berlaku apabila gula dan garam diaduk di dalam air?
What happens when sugar and salt are stirred in water?
- A Gula dan garam larut
Sugar and salt dissolve
 - B Gula dan garam tidak larut
Sugar and salt do not dissolve
 - C Gula larut tetapi garam tidak larut
Sugar dissolves but salt does not dissolve

9. Gambar di bawah menunjukkan kitaran air semula jadi.
The diagram below shows the natural water cycle.



Apakah yang berlaku dalam kitaran air semula jadi?
What happens in the natural water cycle?

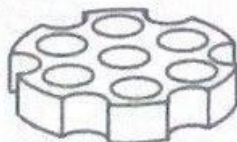
- A Air bertukar menjadi tanah.
Water turns into soil.
- B Air mengalir ke dalam tanah dan sungai.
Water flows into the ground and rivers.
- C Air menjadi wap air, membentuk awan dan turun sebagai hujan.
Water becomes water vapour, forms clouds, and falls as rain.

10. Komponen yang manakah berbentuk silinder?
Which component is cylindrical in shape?

A



B

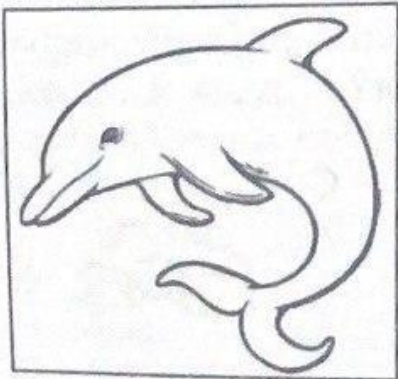
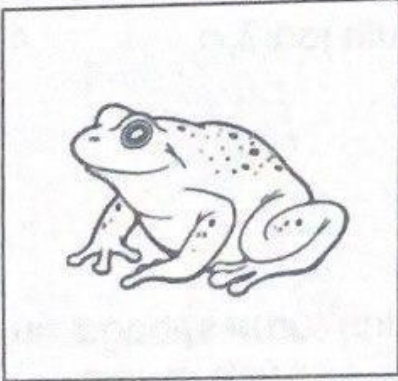
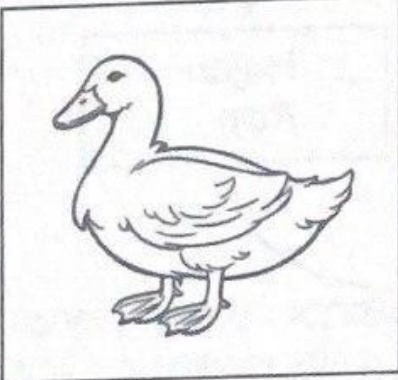
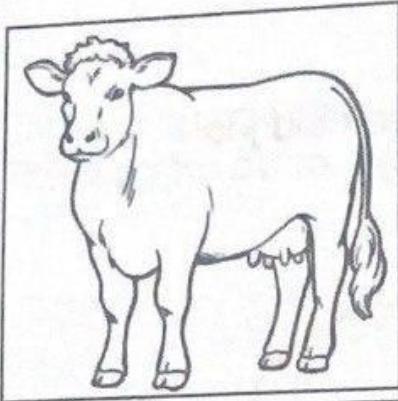


C



Bahagian B
[20 markah]
Jawab semua soalan.

- I. Padankan haiwan dengan cara membiak yang betul.
Match the animals with the correct ways of reproduction.

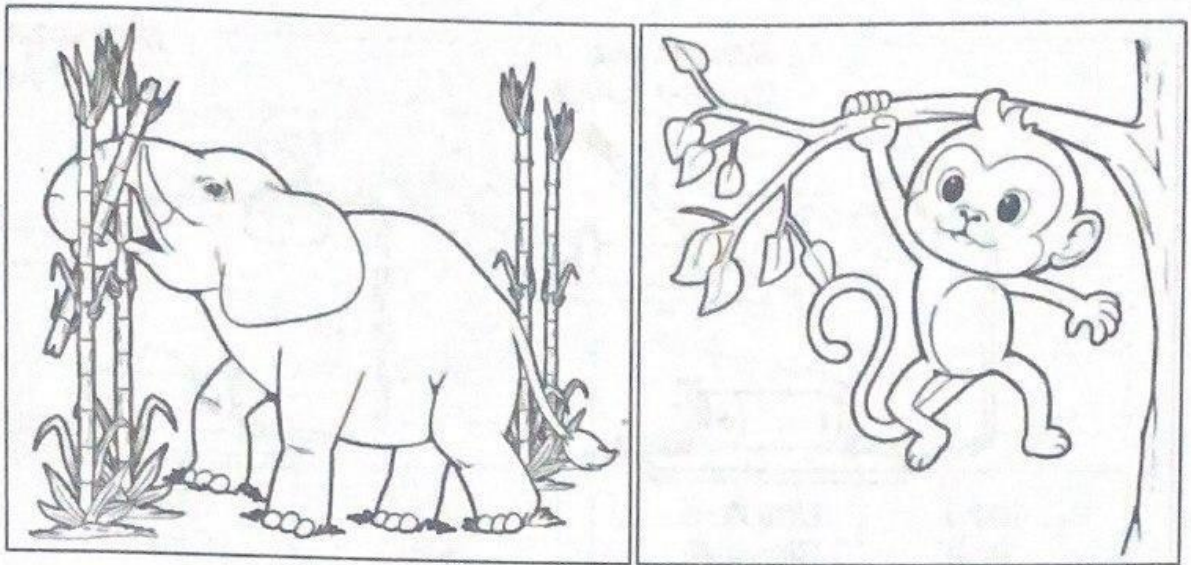


Bertelur
Laying eggs

Melahirkan anak
Giving birth

[4 markah/4 marks]

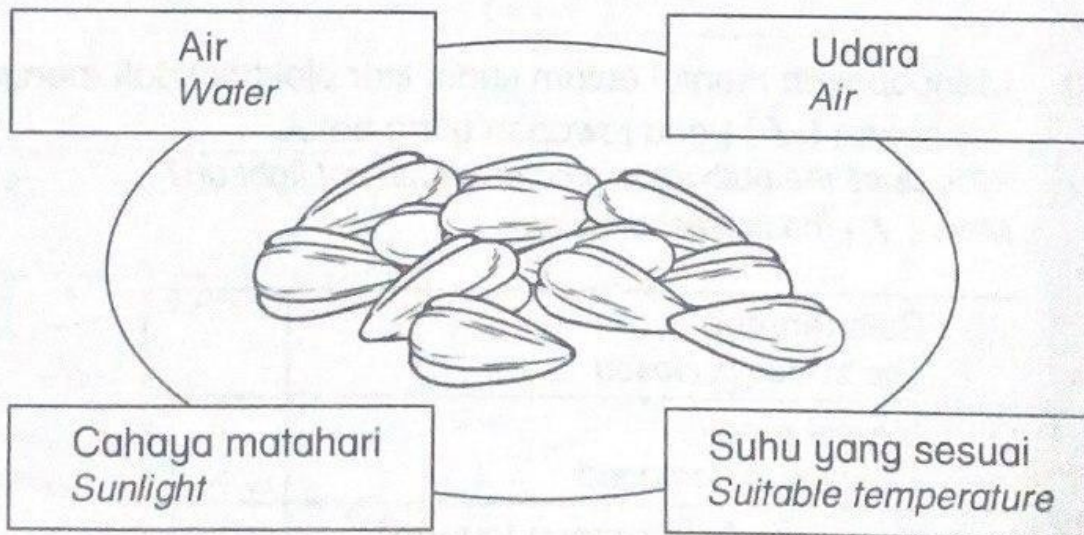
2. (a) Gariskan jawapan yang betul berdasarkan gambar di bawah.
Underline the correct answers based on the diagrams below.



- (i) Tumbuhan-tumbuhan penting sebagai sumber (makanan / udara) kepada haiwan.
Plants are important as a source of (food / air) for animals.
- (ii) Tumbuh-tumbuhan menjadi (ubat / habitat) untuk haiwan.
Plants become (medicine / habitat) for animals.

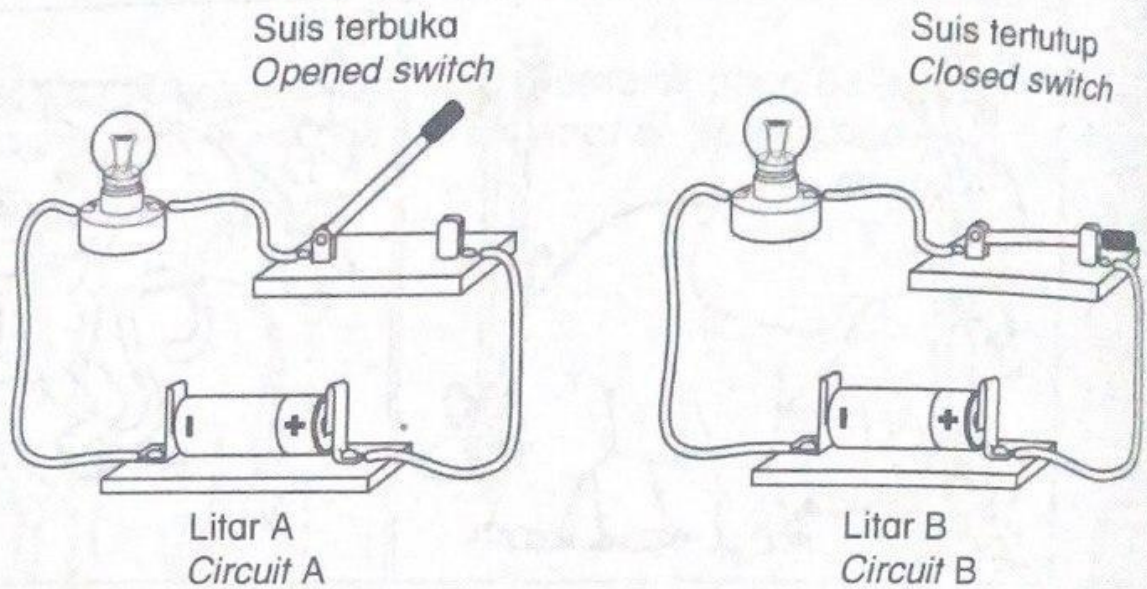
[2 markah/2 marks]

- (b) Warnakan keperluan asas untuk biji benih bercambah.
Colour the basic needs for seeds to germinate.



[2 markah/2 marks]

3. (a) Gambar di bawah menunjukkan dua litar elektrik.
The diagram below shows two electric circuits.



Isi tempat kosong dengan jawapan yang betul berdasarkan gambar di atas.
Fill in the blanks with the correct answers based on the above diagram.

Mentol dalam litar _____ menyala kerana suis dalam keadaan _____.

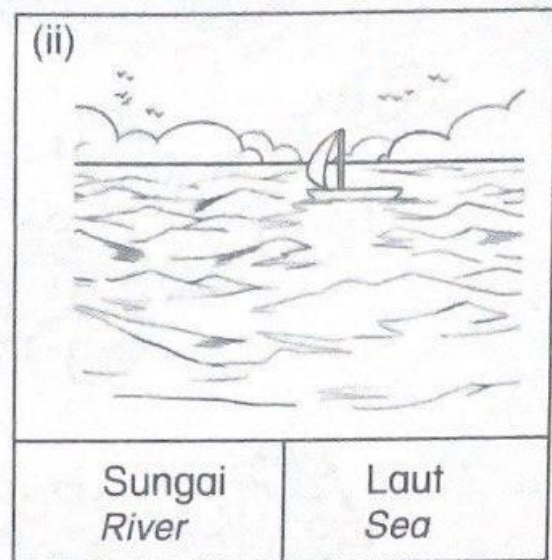
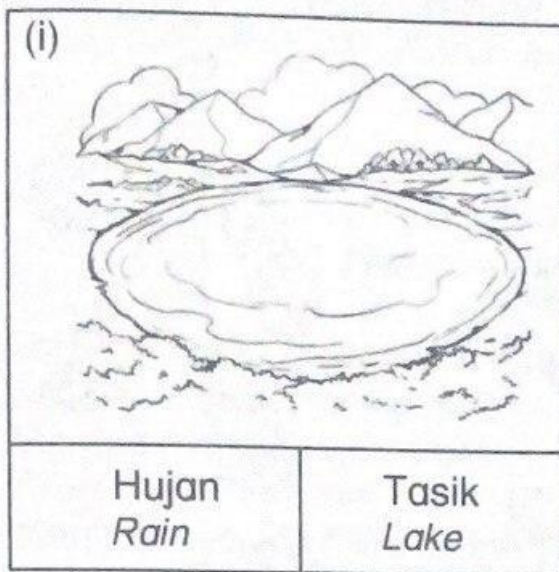
The bulb in circuit _____ lights up because the switch is _____.

[2 markah/2 marks]

- (b) Mengapakah mentol dalam suatu litar elektrik tidak menyala?
Tandakan (✓) pada jawapan yang betul.
Why does the bulb in an electric circuit not light up?
Mark (✓) the correct answers.

(i) Suis tertutup The switch is closed	
(ii) Mentol rosak The bulb is damaged	
(iii) Sel kering kekurangan tenaga The dry cell is out of energy	

4. (a) Bulatkan sumber air semula jadi berdasarkan gambar.
Circle the natural water sources based on the diagrams.

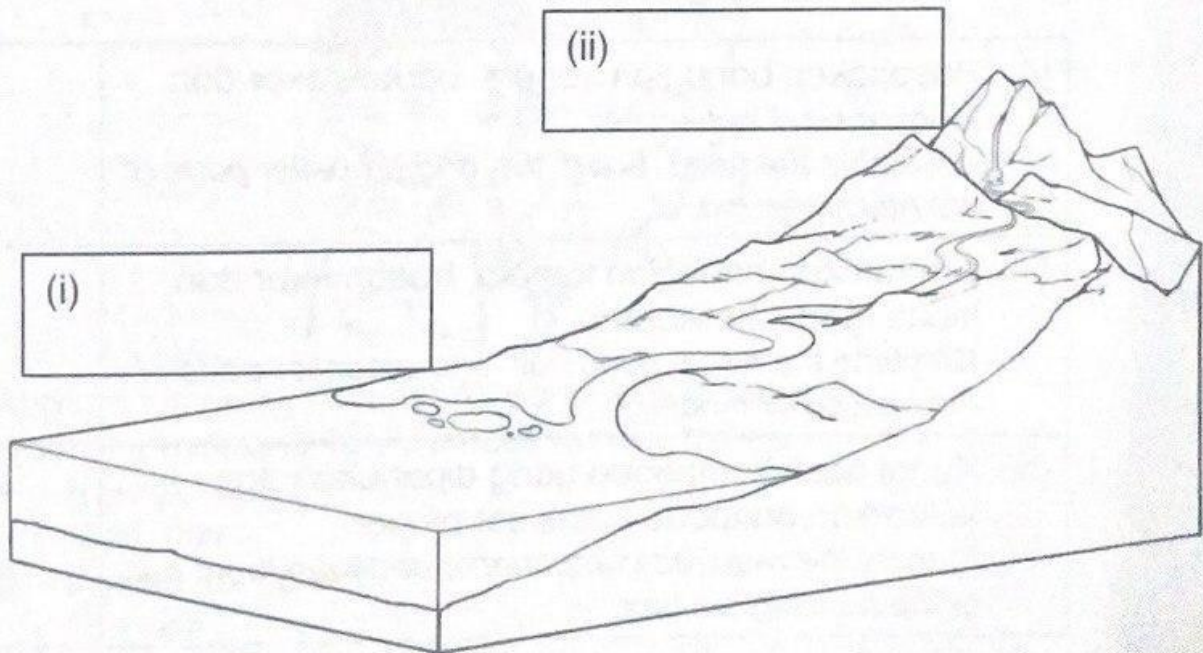


[2 markah/2 marks]

- (b) Labelkan gambar aliran air semula jadi di bawah.
Label the diagram of the natural water flow below.

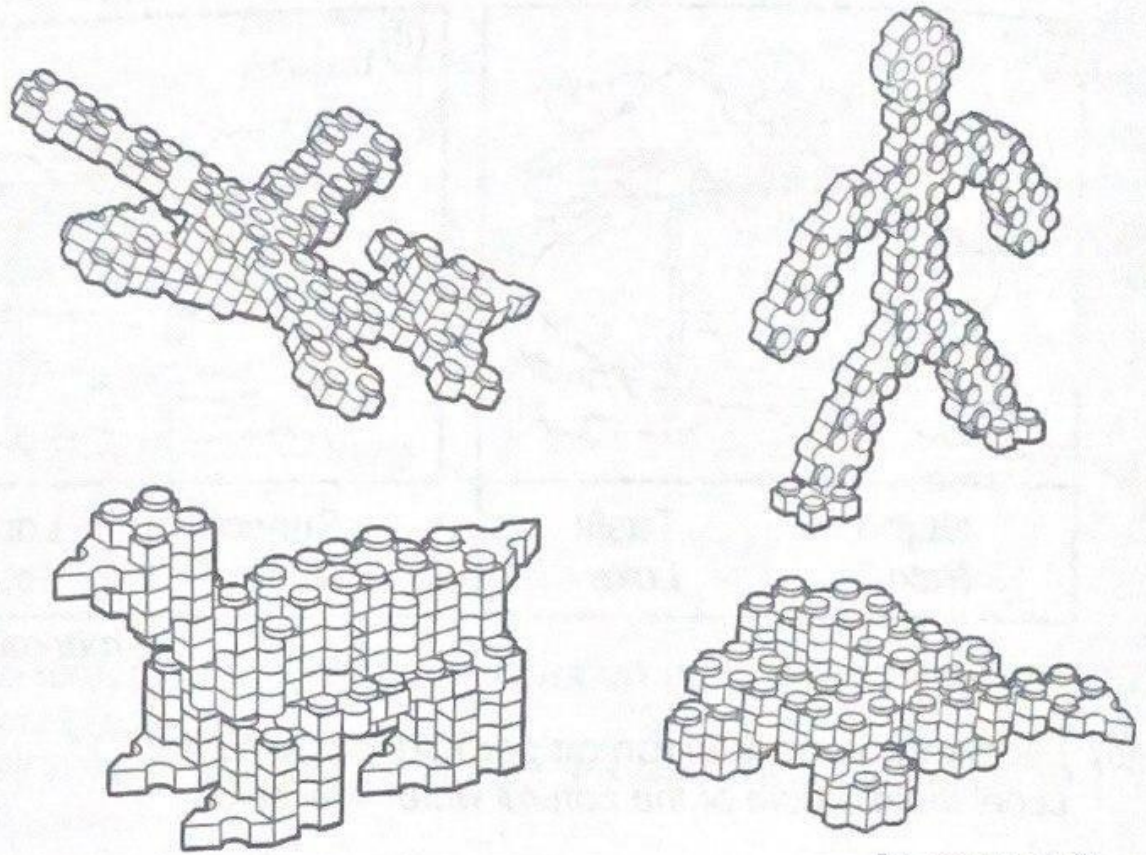
Kawasan tanah tinggi
Highland

Kawasan tanah rendah
Lowland



[2 markah/2 marks]

5. (a) Warnakan model binaan berbentuk haiwan.
Colour the animal-shaped building models.



[2 markah/2 marks]

- (b) Tuliskan nombor bagi langkah-langkah membina model helikopter mengikut urutan yang betul.
Number the steps to build a helicopter model in the correct order.

<p>(i) Pasangkan bahagian kepala, badan, ekor dan kipas model helikopter. <i>Assemble the head, body, tail, and propeller parts of the helicopter model.</i></p>	
<p>(ii) Cantumkan bahagian kepala, badan ekor dan kipas model helikopter. <i>Combine the head, body, tail, and propeller parts of the helicopter model.</i></p>	
<p>(iii) Kenal pasti komponen yang diperlukan dan keluarkan daripada kotak set binaan. <i>Identify the required components and take them out of the building set box.</i></p>	

[2 markah/2 marks]