

# CAMBRIDGE PRIMARY SCIENCE 1





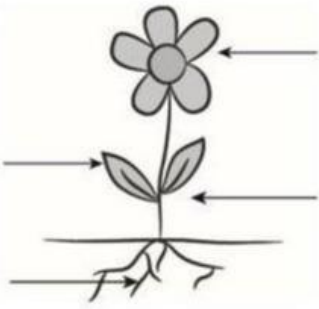
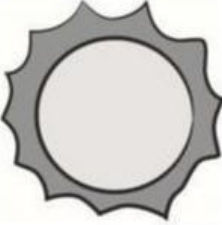

## Unit 1. Check the progress

Name: \_\_\_\_\_

Date: \_\_\_\_\_

Class: \_\_\_\_\_

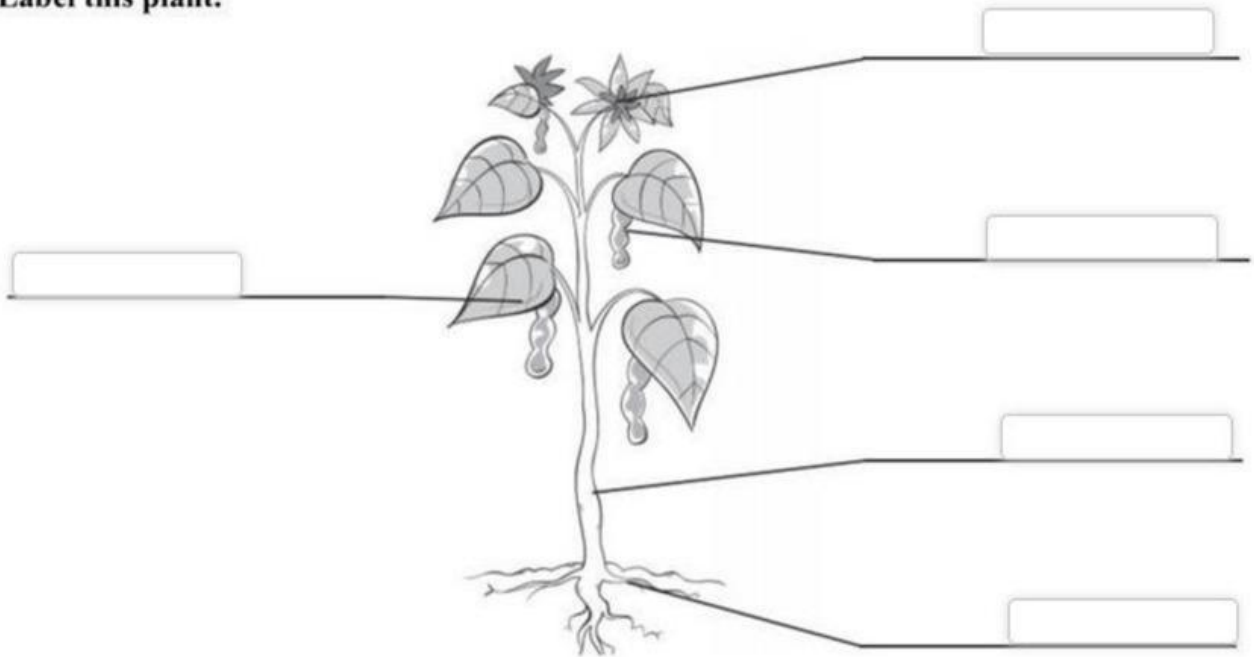
### 1. Write the missing words.

<p>living</p>  <p>Plants and animals are <input type="text"/>.</p>	<p>non-living</p>  <p>A rock is <input type="text"/>.</p>	
<p>plant</p>  <p>The <input type="text"/> grows.</p>	<p>animals</p>  <p>There are lots of <input type="text"/>.</p>	
<p>leaf</p> <input type="text"/>		<p>flower</p> <input type="text"/>
<p>root</p> <input type="text"/>		<p>stem</p> <input type="text"/>
<p>light</p>  <p>The sun makes <input type="text"/>.</p>	<p>water</p>  <p>Plants need <input type="text"/>.</p>	

Colour in only the things that are alive.



3. Label this plant.



leaf

flower

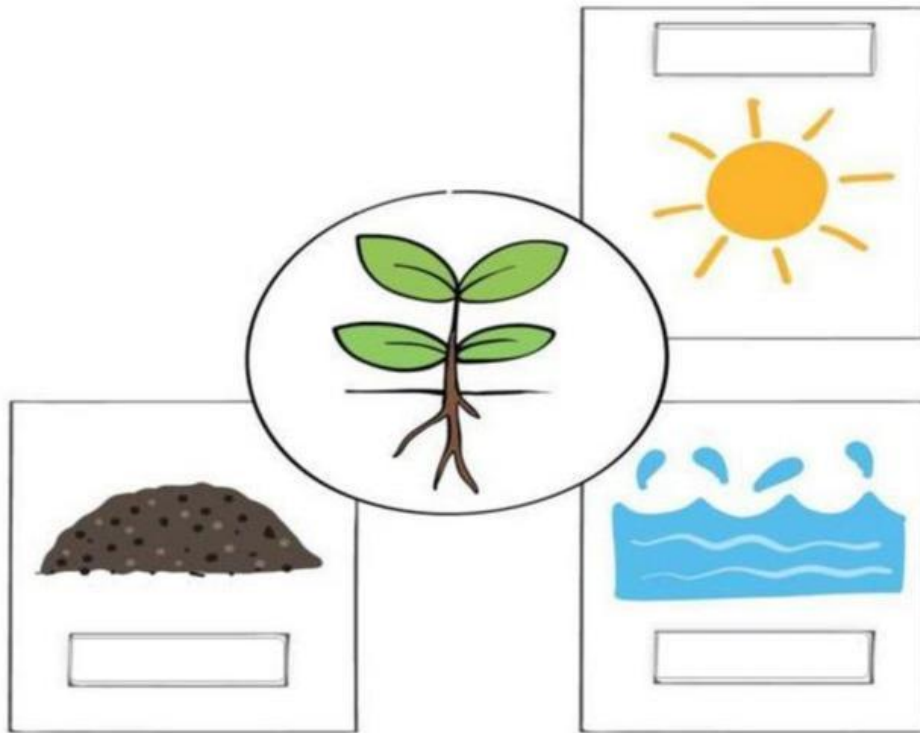
fruit

stem

roots

4. Choose and write.

soil                      sunlight                      water



5. Read and circle the best answer.

1. Plants and animals are ..... They are living things.

- A. alive                      B. not a live

2. The ..... moves water to the leaves.

- A. flower                      B. stem                      C, fruit

3. Plants can't grow in the cave because there is no .....

- A. food                      B. light                      C. water

4. The seeds need ..... and light to grow.

- A. food                      B. water

\_\_ THE END \_\_