

Questions 1-5

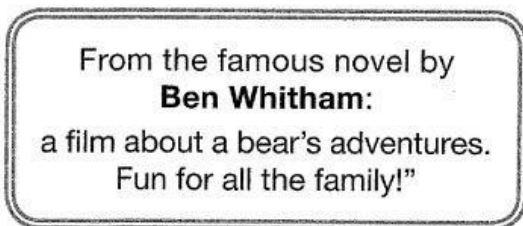
For each question, choose the correct answer.

1



- A Anton has to check his sister knows about the arrangements for getting home.
- B Anton should remind his sister to switch her phone back on.
- C Anton needs to ask his sister if she's taking part in a sports event later.

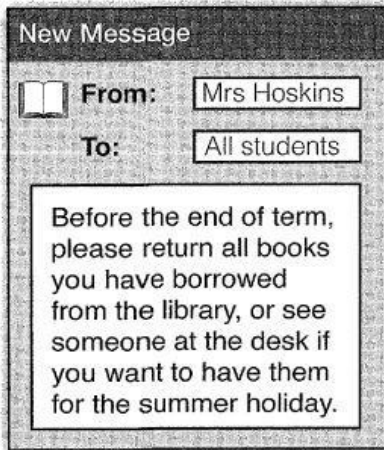
2



This film is

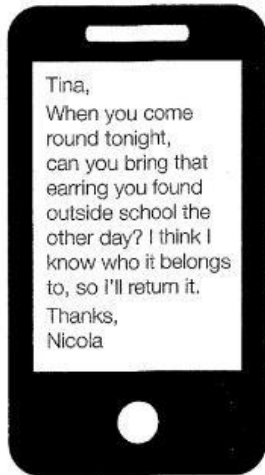
- A about a family of wild animals.
- B not suitable for people under a certain age.
- C based on a popular fiction book.

3



- A You must take back all the library books you've got before the summer holiday.
- B If there are library books you want, borrow them before the end of term.
- C To keep any library books for holiday reading, ask staff at the desk.

4



- A Nicola is telling Tina to return something she was lent recently.
- B Nicola is hoping she can give a lost item back to its owner.
- C Nicola is asking for help to find a lost earring belonging to her.

5



- A Families may not find suitable bikes for everyone unless they've reserved them.
- B You can always find a range of bikes for hire here.
- C Bikes aren't available for customers' use in the evenings.

Exam Practice Test 2 Reading Part 1

TIP

Underline the key words in the text and look for similar expressions in A, B and C.

Questions 1–5


For each question, choose the correct answer.

1

**HEAVY SNOW EXPECTED OVERNIGHT
TRAIN AND BUS DELAYS POSSIBLE
CHECK WEBSITES REGULARLY –
SOME SCHOOLS AND OFFICES MAY
BE CLOSED TOMORROW**

- A The bad weather will make a lot of public transport late tomorrow.
- B Snow that is falling will cause a number of problems tomorrow.
- C Students should watch for announcements in case they are unable to attend classes tomorrow.

2



Have you got books you've already read? Bring them to our Book Exchange on Friday – other students might enjoy them!
Mrs Jones

- What is Mrs Jones asking students to do?**
- A share books they no longer want with their schoolmates
 - B find out from other students which books they've enjoyed
 - C bring in a good book to talk about on Friday

3



- A Sophie wants Billy to contact Joanna and warn her about traffic problems in town.
- B Sophie needs to let Joanna know that she's probably going to be late.
- C Sophie's not sure when she's supposed to meet Joanna to see a film.

4

New Message

 **From:** Coach

To: Rugby club

Just wanted to thank players in Saturday's match, and people who supported them. Remember, the other side were league winners, so all wasn't bad – but next time let's beat them!

What is the coach doing?

- A congratulating the team on their most recent win
- B letting the team's fans know the positive effect of their support
- C encouraging the team to play even better in a future match

5



- A We have more food available, apart from what's written on the menu.
- B To decide what to eat, you must go and look at the board inside.
- C Speak to someone at the counter when you want to order your food.

TIP

When you have chosen A, B or C, compare it with the text and check that it really says the same thing.