

## GETTING AROUND MY CITY

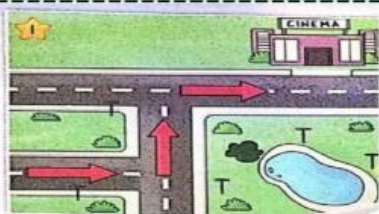
Look at the map and complete the sentences with prepositions from the box. You may need to use each preposition more than once.



Next to      Between      Across from

1. The school is \_\_\_\_\_ the police station and the bank.
2. The cinema is \_\_\_\_\_ the library.
3. The pet shop is \_\_\_\_\_ the coffee shop.
4. The Hospital is \_\_\_\_\_ from the cinema.
5. The coffee shop is \_\_\_\_\_ the grocery and the pet shop.
6. The bank is \_\_\_\_\_ the school
7. The police station is \_\_\_\_\_ the school and the hospital.

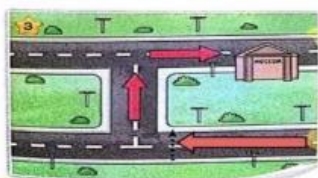
Find the correct direction to get to different locations.  
Use the expressions 'Turn left', 'Turn Right' and 'Go Straight'.



Where is the cinema?

1. Go \_\_\_\_\_.
2. Turn \_\_\_\_\_.
3. Then, turn \_\_\_\_\_.

You got to the cinema!



Where is the museum?

1. Go \_\_\_\_\_.
2. Turn \_\_\_\_\_.
3. Then, turn \_\_\_\_\_.

You got to the museum!



Where is the library?

1. Go \_\_\_\_\_.
2. Turn \_\_\_\_\_.
3. Then, go \_\_\_\_\_.

You got to the library!