

## LET'S TALK ABOUT TEETH!

The tooth consists of two anatomical parts: the **CROWN** and the **ROOT**.

The \_\_\_\_\_ of a tooth is the part **inside\* the gum\***; it is normally **not visible**.

The \_\_\_\_\_ is the part of a tooth that is normally **visible** in the mouth.

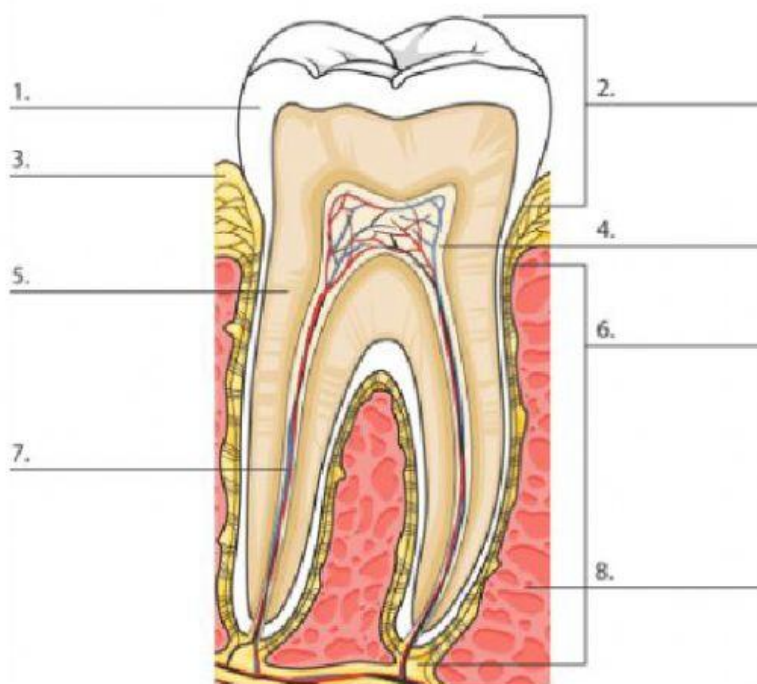
### STRUCTURE OF A TOOTH

Match nouns and definitions using colours.

ENAMEL	It is the layer <b>below* the enamel</b> .
PULP*	It is the part of a tooth normally <b>visible</b> in the mouth.
CROWN	It is the <b>whitish* covering*</b> of the crown. It is the <b>hardest</b> substance in the body.
DENTIN*	It is the <b>soft</b> portion <b>inside the dentin</b> . It consists of blood vessels* and nerves.
ROOT	It is the part <b>inside the gum</b> .

Label the picture using the words from the box.

dentin - pulp - root - gums - crown - blood vessels and nerves - enamel - jawbone\*



\* inside = dentro  
pulp = polpa  
dentin = dentina

gum = gengiva

enamel = smalto

below = al di sotto

whitish = biancastra

covering = copertura

vessels = vasi sanguigni

jawbone = mandibola