



Graphing Sine and Cosine Functions

sine	cosine
$\sin 90^\circ =$ <input type="text"/>	$\cos 90^\circ =$ <input type="text"/>
$\sin 180^\circ =$ <input type="text"/>	$\cos 180^\circ =$ <input type="text"/>
$\sin 270^\circ =$ <input type="text"/>	$\cos 270^\circ =$ <input type="text"/>

1. $y = \cos x$

Graph

amplitude

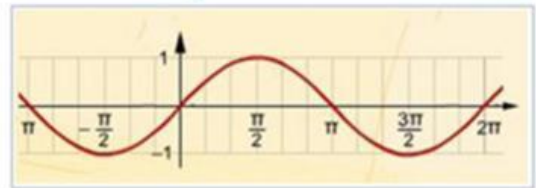
period

2

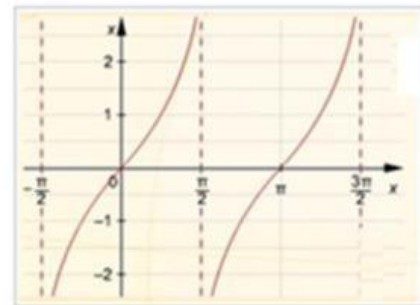
1

 2π π

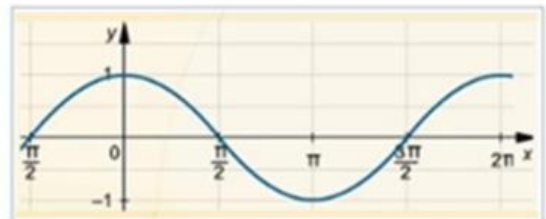
a.



b.



c.





Lesson 9-4 Graphing Sine and Cosine Functions

2. $y = \sin x$

Graph

amplitude

period

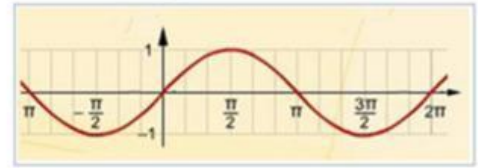
2

1

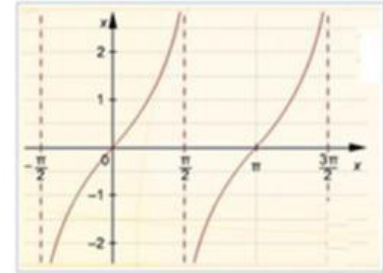
2π

π

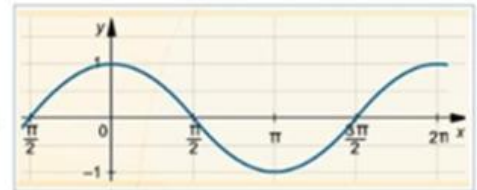
a.



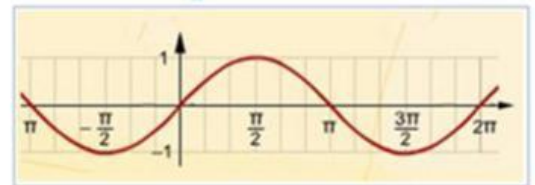
b.



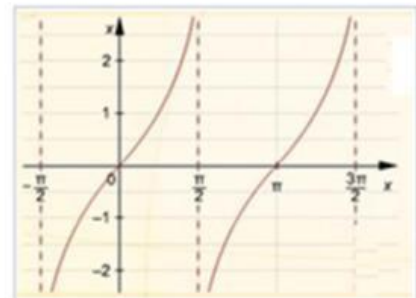
c.



a.



b.



c.

