



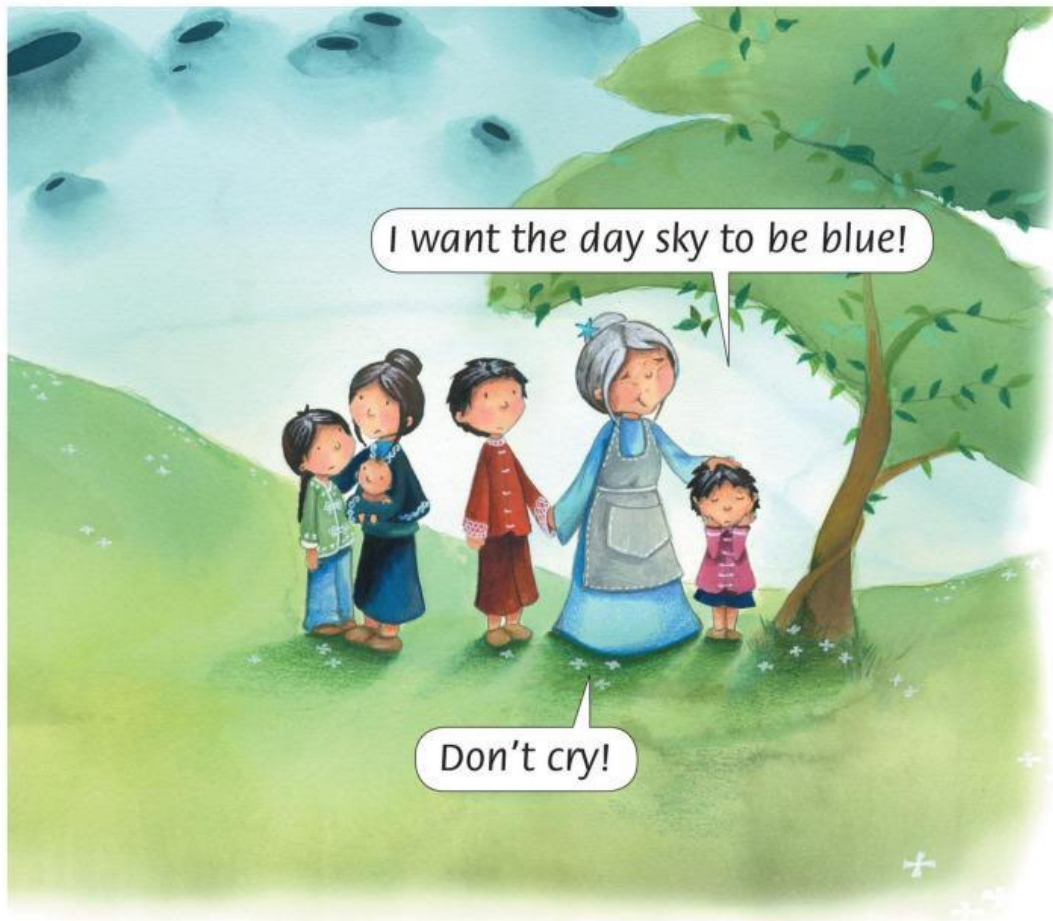
'But we only have ten pieces,' say the children. 'One, two, three, four, five, six, seven, eight, nine, ten!'

We can have these leaves.



'We can have these leaves,' says Lownu. 'Look! Here are ten!'

'No!' says the little boy. 'They're green. The sky is blue!'



The little boy cries.

'I want the day sky to be blue! Blue.
All blue again!'

'Don't cry!' says Lownu. 'Give me
the pieces of blue. Go and play!
I want to think.'



Night comes.
Lownu puts her
blue dress on
the table. And
her silver apron.

She cuts pieces.
Pieces from
the blue dress.
Pieces from the
silver apron.



She puts them
together.

Name: _____ Course: _____

Lownu mends the sky

Activity 3

1. Choose the correct answer (Reading Comprehension)

Lee las preguntas y selecciona la opción correcta.

1. What is the number of blue sky pieces?

- a) Five
- b) Ten
- c) Seven

2. Why is the little boy crying?

- a) Because he is hungry.
- b) Because he wants the sky to be blue again.
- c) Because he lost his cat.

3. What color are the leaves Lownu finds?

- a) Blue
- b) Silver
- c) Green

4. What does Lownu use to mend the sky?

- a) Paper and glue.
- b) Her blue dress and silver apron.
- c) Green leaves and flowers.

2. Order the Story (Sequencing)

Escribe los números del 1 al 4 para ordenar los sucesos de esta parte de la historia.

- () Lownu puts her blue dress and silver apron on the table.
- () The children count ten pieces of blue sky.
- () Lownu says, "Don't cry! Give me the pieces of blue."
- () The little boy says the leaves are green, but the sky is blue.

3. Vocabulary Match (Word-Image Association)

Une la palabra con su descripción o color según el texto.

- | | |
|-----------|-----------|
| 1. Sky | a) Silver |
| 2. Leaves | b) Blue |
| 3. Dress | c) Green |
| 4. Apron | d) Blue |

4. True or False? (Critical Thinking)

Escribe T (True) si es verdadero o F (False) si es falso.

- 1. Lownu wants the children to go and play while she thinks. ()
- 2. The children have twenty pieces of blue sky. ()
- 3. Lownu cuts pieces from her blue dress. ()
- 4. Night comes and Lownu goes to sleep immediately()