

Test 1

PAPER 1 READING AND WRITING TEST (1 hour 30 minutes)

READING

Part 1

Questions 1–5

Look at the text in each question.

What does it say?

Mark the correct letter **A**, **B** or **C** on your answer sheet.

Example:

0



A Buy three films for the price of two.

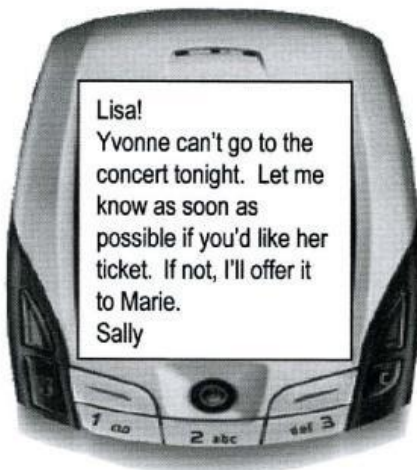
B Get a free film with every one you buy.

C Films bought here are printed free.

Answer:

0	<input checked="" type="checkbox"/> A	<input type="checkbox"/> B	<input type="checkbox"/> C
---	---------------------------------------	----------------------------	----------------------------

1



Who should Lisa contact if she wants to go to the concert?

A Yvonne

B Marie

C Sally

2

Parking Form

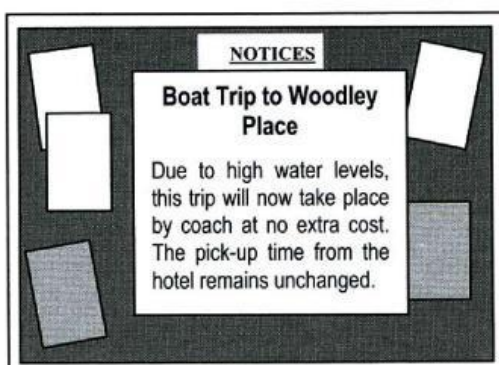
Complete and place in lower left-hand corner of windscreen

Car registration

Date

- A Register your car here by filling in this form.
- B Put this form in your car windscreen after filling it in.
- C Place the completed form at the top of your car windscreen.

3



What has changed about the trip to Woodley Place?

- A the transport
- B the price
- C the departure time

4

Mum,
 Could you pick up my skirt from the dry cleaner's when you collect your jacket? I'll pay you back this evening.
 Thanks.

Sonja

What will Sonja's mother do?

- A receive money for the dry cleaning from Sonja tonight
- B fetch Sonja's jacket from the dry cleaner's for her
- C deliver her own clothes to the dry cleaner's

5

Allow at least two hours for your visit to the castle



- A Each tour of the castle lasts less than two hours.
- B Two hours is the minimum time recommended for a visit to the castle.
- C Visitors are only allowed to spend two hours inside the castle.

Part 2

Questions 6–10

The people below live in London and are all interested in keeping fit.

On the opposite page there are descriptions of eight websites for people wanting to keep fit.

Decide which website would be the most suitable for the following people.

For questions 6–10, mark the correct letter (A–H) on your answer sheet.

6



Klara has recently moved to London and enjoys serious running. She is looking for a club where she can take part in competitions.

7



Sami wants to find some ideas for keeping fit at home and communicate online with other people doing the same thing. He doesn't want to have to pay for using the website.

8



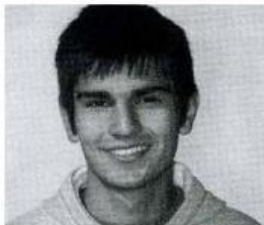
Kumiko is a member of a local gym where she goes at least twice a week. She does not get much time to shop, so wants to buy gym clothes and shoes online.

9



Peter loves the outdoors and cycles to different places each weekend to keep fit. He wants a website which will give him suggestions for a range of suitable destinations.

10



Stefano is a student and is looking for a gym where he can keep fit. He wants to pay each time he visits the gym rather than paying a fee to become a member.

FIND THE PERFECT WAY TO KEEP FIT WITH THESE WEBSITES

- A www.activelife.co.uk** This site is perfect for those who like to combine living a healthy lifestyle with enjoying the countryside. Type in the name of the town and you get a list of locations that offer routes for cycling or exploring the area on foot. There is also information on cycling competitions in Britain.
- B www.fitinfo.com** This online shop offers books, magazines, DVDs and software connected to keeping fit. You simply type in the aspect of keeping fit that you are interested in, such as 'keeping fit outdoors', and a super selection is displayed.
- C www.fitnet.co.uk** Steve Amos started this site for busy people wanting to keep fit. Fill in a questionnaire and Steve will create a fitness programme for you. Although Steve's fee is high, you can email him for advice whenever you want. In addition, Steve has designed a range of fitness clothes and footwear, which anyone can order (48-hour delivery).
- D www.NAG.co.uk** The National Athletics Group is a site for people interested in athletics. It allows you to find out where your nearest athletics club is and provides information about races and other athletics events around the country. There is a popular chatroom where athletes exchange suggestions and ideas.
- E www.swavedon.com** Swavedon is a national park with a lake, which offers many different ways of keeping fit in the great outdoors. There are three cycle routes, a jogging track around the lake and several woodland walks.
- F www.fitnessonline.co.uk** This is a free government website that encourages people to keep fit. It gives diet advice, and allows you to work through a fitness programme without leaving your house. It also offers advice on gym equipment to buy and has a chatroom, where you can compare experiences with others.
- G www.fitnessclub.co.uk** This website tells you all you need to know about this chain of gyms, including where your nearest Fitnessclub gym is, how you can become a member and how much the yearly fee is. Advice is given on everything from using a running machine to buying the right equipment. Each gym has a swimming pool and a shop selling gymwear.
- H www.sportsarena.co.uk** This website tells you how you can keep fit at this group of London sports centres. You don't have to be a member - these centres operate a pay-as-you-go system. They all have a pool, squash courts, gym and outdoor tennis courts. The website includes details of locations, opening times and prices.

Part 5

Questions 26–35

Read the text below and choose the correct word for each space.

For each question, mark the correct letter **A**, **B**, **C** or **D** on your answer sheet.

Example:

0 **A** most **B** more **C** best **D** better

Answer:

0	A	B	C	D
	<input checked="" type="checkbox"/>	<input type="checkbox"/>	<input type="checkbox"/>	<input type="checkbox"/>

Tom Cruise

Tom Cruise is one of the (0) successful actors in cinema history. However, life hasn't always been that easy for him. As a young boy, Tom was shy and had (26) in finding friends, although he really enjoyed (27) part in school plays.



(28) he had finished High School, Tom went to New York to look for work. He found employment as a porter, and at the same time he (29) drama classes. In 1980, the film director Franco Zeffirelli (30) Tom his first part in a film. Ten years later, he had become (31) successful that he was one of the highest-paid actors in Hollywood, (32) millions of dollars for (33) film.

Today, Tom (34) appears in films and is as (35) as ever with his thousands of fans from all around the world.

- | | | | | |
|----|-------------|-------------|-------------|--------------|
| 26 | A worry | B problem | C fear | D difficulty |
| 27 | A making | B holding | C taking | D finding |
| 28 | A While | B During | C After | D Until |
| 29 | A prepared | B waited | C attended | D happened |
| 30 | A suggested | B offered | C tried | D advised |
| 31 | A so | B such | C too | D very |
| 32 | A paying | B earning | C winning | D reaching |
| 33 | A another | B all | C each | D some |
| 34 | A yet | B ever | C already | D still |
| 35 | A popular | B favourite | C preferred | D approved |

Test 2

PAPER 1 READING AND WRITING TEST (1 hour 30 minutes)

READING

Part 1

Questions 1–5

Look at the text in each question.

What does it say?

Mark the correct letter **A**, **B** or **C** on your answer sheet.

Example:

0



- A Do not leave your bicycle touching the window.
- B Broken glass may damage your bicycle tyres.
- C Your bicycle may not be safe here.

Answer:

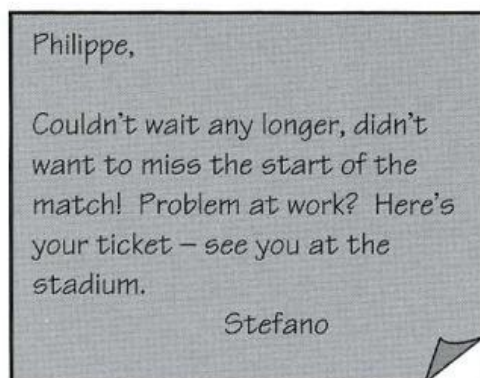
0	A	B	C
	<input checked="" type="checkbox"/>	<input type="checkbox"/>	<input type="checkbox"/>

1



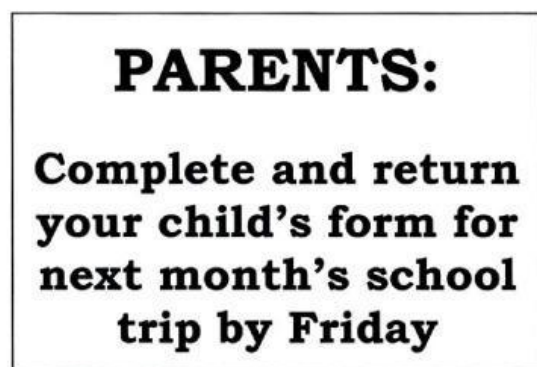
- A This shop will sell customers' watches within twelve months.
- B This shop will keep customers' watches for up to twelve months.
- C This shop will look after customers' watches for more than twelve months.

2



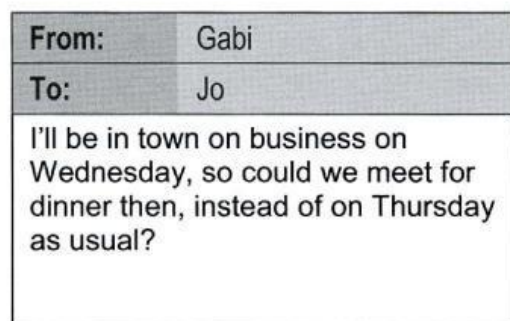
- A Philippe and Stefano missed each other at the stadium.
- B Stefano had to leave without Philippe to get to work.
- C Stefano has given up waiting for Philippe to arrive.

3



- A Parents must return forms this week if their child is going on Friday's trip.
- B Parents cannot go on next month's trip unless they return their forms by Friday.
- C The last day for returning completed forms for the trip is Friday.

4



Gabi wants Jo to

- A change an arrangement.
- B cancel a regular event.
- C come to a business meeting.

5



- A It is not possible to use the lift above the ground floor today.
- B The lift will not be going to the basement today.
- C The stairs between the basement and the ground floor are closed today.

Part 2

Questions 6–10

The people below all want to visit a park.

On the opposite page there are descriptions of eight parks.

Decide which park would be the most suitable for the following people.

For questions 6–10, mark the correct letter (A–H) on your answer sheet.

6



Isabel works in the city centre and likes painting and drawing in her free time. She wants to practise her hobby in a small, quiet park near her office.

7



Mr Martin wants to take his eight-year-old pupils to a park anywhere within the city, with lots of organised activities which allow the children to read about local wildlife they may see.

8



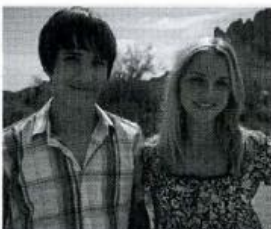
Kumiko and Atsuko would like to visit a park which they can get to by boat. They want to buy lunch there and then enjoy a short walk accompanied by an expert leader.

9



Hans and Birgit Kaufmann and their family want to visit a park which is historically important. Their teenage children would like to try a water sport.

10



Melanie and Stefan are students who need to visit a busy park for a college project. They want to draw people taking part in team sports and watching entertainment.

PARKS IN AND AROUND THE CITY

A Hadley Park

This park is in the peaceful village of Cranford, 20 km outside the city. The park has large green spaces for football and there is also an area of woodland, a boating lake, fish ponds and a variety of local wildlife. The public car park is free.

C Brock Park

A beautiful park on the edge of the city, Brock Park attracts huge crowds. The open-air theatre has a programme of plays suitable for school groups. There is a well-used basketball court and baseball field, a children's playground and a café. Climb Harry's Hill to admire the beautiful fields and forests beyond the city.

E Boscawen Park

This small and peaceful park offers guided tours, given by the knowledgeable Environment Officers, and evening visitors to the park may be lucky enough to see rare frogs and bats. It is situated on the River Elton and can be reached in about 30 minutes from the city centre by river taxi. There is a snack bar and gift shop.

G Victoria Park

This quiet park, on the edge of the city and easy to visit by public transport, has boats for hire on the lake, a skateboard park, basketball and tennis courts and a picnic area. Often seen in postcard views of the city, Victoria Park contains one of the oldest windmills in the country - the museum should not be missed.

B Highdown Park

The largest and most popular open space in the city, Highdown has many paths for keen walkers, as well as horse-riding and golf. The much-visited 19th-century glasshouses contain an interesting exhibition about birds from around the world.

D Lilac Park and House

This busy city-centre park has a long history dating back to the 1700s, when it belonged to the writer Thomas Crane. The house is open to the public and a guided visit can also include a walk around the famous rose gardens, finishing at the popular Butterfly Café.

F East Bank Park

This is a tiny, little-known park in the heart of the city, with gardens filled with sculptures, trees and flowers. It makes a perfect resting place, popular with local artists, and is within minutes of the theatre and entertainment district.

H Elmwood Park

At Elmwood Park, there are walks on well-made paths and cycle rides for all abilities. Elmwood is just inside the city limit and has an area of quiet woodland, which is home to deer and other animals. The visitor centre, numerous display boards and a fun quiz make this a positive learning experience for all ages.

Part 3

Questions 11–20

Look at the sentences below about the Iditarod Trail in Alaska.

Read the text on the opposite page to decide if each sentence is correct or incorrect.

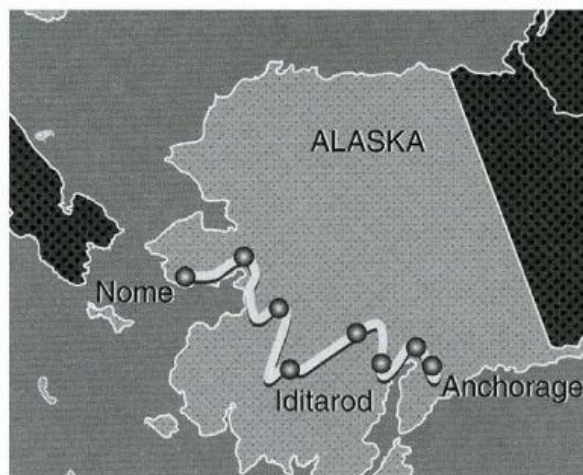
If it is correct, mark **A** on your answer sheet.

If it is not correct, mark **B** on your answer sheet.

- 11 The population of Alaska remained the same throughout the 1880s.
- 12 For a short time, more people lived in Iditarod than in any other city in Alaska.
- 13 After 1910, it became possible to deliver letters in winter as well as summer.
- 14 When travelling on the Iditarod Trail, drivers had to take food for the dogs with them.
- 15 In the 1920s, aeroplanes were used more often than boats and dogs.
- 16 Doctors in Nome had a good supply of medicine to cure diphtheria.
- 17 The pilot Carl Eielson refused to fly his plane because of the cold weather.
- 18 Leonhard Seppala's dog was able to lead him safely to his destination.
- 19 Balto fell into some icy water but managed to save himself.
- 20 The Iditarod race takes a different route every year.

THE HISTORY OF THE IDITAROD – THE LAST GREAT RACE ON EARTH

In the 1880s, gold was discovered in what is now the most northern state of the USA, Alaska. Many people came to the area hoping to get rich. New towns were built and grew quickly. One such town was called Iditarod, which means 'far, distant place'. This town grew so quickly during 1909 that it briefly became the largest city in Alaska. In the summer months, essential supplies could be delivered to these towns by boat, but in the winter the rivers and the ocean froze and there was no way to get to them. So, in 1910, a winter track was built which would be used by teams of dogs pulling sleds. They would take mail, food and clothes to the gold miners.



The track became known as the Iditarod Trail. It took a team of dogs about three weeks to travel across Alaska. They stopped at 'roadhouses' where the drivers could get a warm bed for the night and something to eat for both themselves and their dogs. The trail was used every winter until the 1920s when aeroplanes replaced steam boats and dog teams as the main form of transport.

However, the dogs had one last taste of fame in 1925, when a disease called diphtheria hit the city of Nome. The disease could be cured, but, unfortunately, the closest medicine that could be found was in Anchorage, right on the other side of Alaska. Aeroplanes were still quite new, so no-one knew if they could fly in such cold weather. Also, Carl Eielson, the only pilot considered skilled enough to manage the flight, was away on a trip at the time. It was therefore agreed that the medicine would be transported using teams of dogs instead.

The trip covered over 1,000 kilometres, most of it along the Iditarod Trail. It took twenty teams just six days to complete the journey. Leonhard Seppala, a Norwegian who had come to Alaska looking for gold, travelled the first 400 of those kilometres. He had to trust his dog Togo's ability to find his way in the blinding snow and Togo turned out to be a reliable guide. The last part of the journey was done by Gunnar Kaasen who had driven dog teams in Alaska for 21 years. His lead dog was Balto. At one point Balto refused to go any further, and saved the team from falling into icy water. The diphtheria was stopped and Balto became a hero.

Nowadays a dog sled race is held every year from Anchorage to Nome, following the route of that famous journey in 1925. It is called the Iditarod and has become known as 'The Last Great Race on Earth'.

Part 4

Question 21–25

Read the text and questions below.

For each question, mark the correct letter **A**, **B**, **C** or **D** on your answer sheet.

Craigie Aitchison

The painter Craigie Aitchison was born in Scotland. He came to London intending to study law, but went to art school instead. There he found the traditional drawing classes difficult, but still kept on painting.

In his late twenties he was given money by the Italian government to study art, and became interested in early Italian artists, which shows in some of his work. He loved the greens and browns of the Italian fields and the clear light there, and wanted to put this light into his paintings.

This led him to paint colours thinly one on top of another from light to dark, but he insists he's never sure what the results will be. He says, 'It's a secret – because I don't know myself. I don't start by painting yellow, knowing I'm going to put anything on top.' Like most talented people, Aitchison makes it sound easy. 'Anyone can do the colours – you can buy them. I simply notice what you put the colours next to.'

Unlike some artists, he never does drawings before he starts a painting, as he feels that if he did, he might get bored and not do the painting afterwards. Instead, Aitchison changes his paintings many times before they are finished. This explains why his favourite models are people who don't ask to see their pictures while he's painting them. 'If I feel they're worried and want to look at the painting, I can't do it.'

Since moving to London years ago, he has not felt part of the Scottish painting scene. He says he is not interested in following any tradition, but just paints the way he can. However, his work still influences young British painters.

- 21 What is the writer trying to do in the text?
- A describe particular works by Craigie Aitchison
 - B teach readers how to paint like Craigie Aitchison
 - C introduce readers to the artist Craigie Aitchison
 - D explain how Craigie Aitchison has made money from painting
- 22 What can the reader learn about Aitchison from the text?
- A He works in a different way from other artists.
 - B He often gets bored with his paintings.
 - C He improved his drawing by going to art school.
 - D He did some paintings for the Italian government.

- 23 What does Aitchison say about his use of colour?
- A He likes starting with the darkest colours first.
 - B He knows the colours he's aiming for when he begins.
 - C He prefers to paint with yellows, greens, and browns.
 - D He understands how different colours work together.
- 24 Aitchison prefers models who don't
- A keep talking to him while he's working.
 - B ask him about his strange method of working.
 - C worry about how long the work will take.
 - D feel anxious to see the work as it's developing.
- 25 What might a visitor at an exhibition say about Aitchison's work?

A

I love his recent paintings of Scotland, which are very similar to a number of other Scottish painters

B

You can still see the influence of his trip to Italy in some of these pictures.

C

You can tell he spent a lot of time drawing the picture before he started painting.

D

I wonder if his law training helps him at all, especially in selling his work.

Part 5

Questions 26–35

Read the text below and choose the correct word for each space.

For each question, mark the correct letter **A**, **B**, **C** or **D** on your answer sheet.

Example:

0 **A** keep **B** stay **C** hold **D** rest

Answer:

0	A	B	C	D
	█	□	□	□

ZOOS

People began to (0) animals in zoos (26) 3,000 years ago, when the rulers of China opened an enormous zoo called the Gardens of Intelligence. In many of the early zoos, animals (27) taught to perform for the visitors. This no longer (28) and it is accepted that the purpose of zoos is for people to see animals behaving naturally.

Today, most cities have a zoo or wildlife park. However, not (29) approves of zoos. People who think that zoos are a good idea say they (30) us with the opportunity to (31) about the natural world and be close to wild animals. Both of (32) would not be possible (33) zoos. On the other hand, some people disapprove of zoos because they (34) it is wrong to put animals in cages, and argue that in zoos which are not (35) properly, animals live in dirty conditions and eat unsuitable food.

- | | | | |
|----------------------|--------------------|-------------------|------------------|
| 26 A above | B over | C more | D beyond |
| 27 A are | B have | C were | D had |
| 28 A appears | B becomes | C develops | D happens |
| 29 A somebody | B everybody | C nobody | D anybody |
| 30 A produce | B bring | C provide | D make |
| 31 A discover | B learn | C find | D realise |
| 32 A that | B what | C whose | D these |
| 33 A without | B instead | C except | D unless |
| 34 A hope | B expect | C imagine | D believe |
| 35 A ordered | B managed | C decided | D aimed |

WRITING

Part 1

Questions 1–5

Here are some sentences about a swimming pool.

For each question, complete the second sentence so that it means the same as the first.

Use no more than three words.

Write only the missing words on your answer sheet.

You may use this page for any rough work.

Example:

0 There is a new swimming pool in our town.

Our town a new swimming pool.

Answer:

0	has got
---	---------

1 It's six months since I last went swimming.

I been swimming for six months.

2 The new pool is near to my home.

It's not the new pool to my home.

3 If you can't swim, you're not allowed in the deep end.

You're not allowed in the deep end you can swim.

4 My friend Sam wanted me to go swimming with him.

'Why come swimming with me?' suggested Sam.

5 I didn't go swimming with Sam because I was very busy.

I was busy to go swimming with Sam.