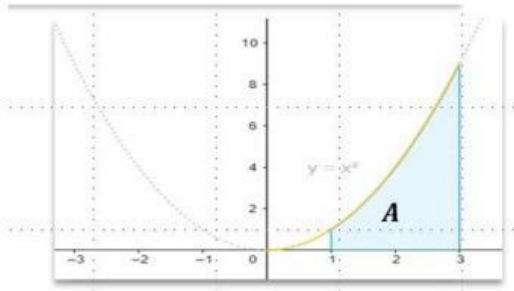


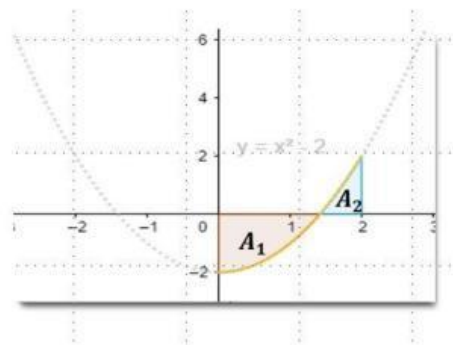
Choose the correct option to describe the shaded area.

Q1 Given graph of $f(x) = x^2$



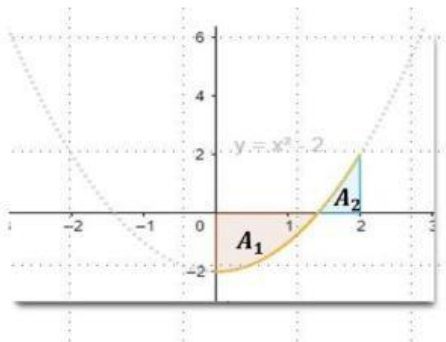
- A) $\int_1^3 x^2 dx$ B) $\int_0^3 x^2 dx$ C) $-\int_1^3 x^2 dx$

Q2 Given graph of $y = x^2 - 2$



- A) $A_1 + A_2$ B) $A_1 - A_2$ C) $-A_1 + A_2$

Q3) Given graph of $f(x) = x^2 - 2$



- A) $\int_{-2}^2 (x^2 - 2) dx$ B) $-\int_0^{\sqrt{2}} (x^2 - 2) dx + \int_{\sqrt{2}}^2 (x^2 - 2) dx$
 C) $-\int_0^2 (x^2 - 2) dx$ D) $\int_0^2 (x^2 - 2) dx$