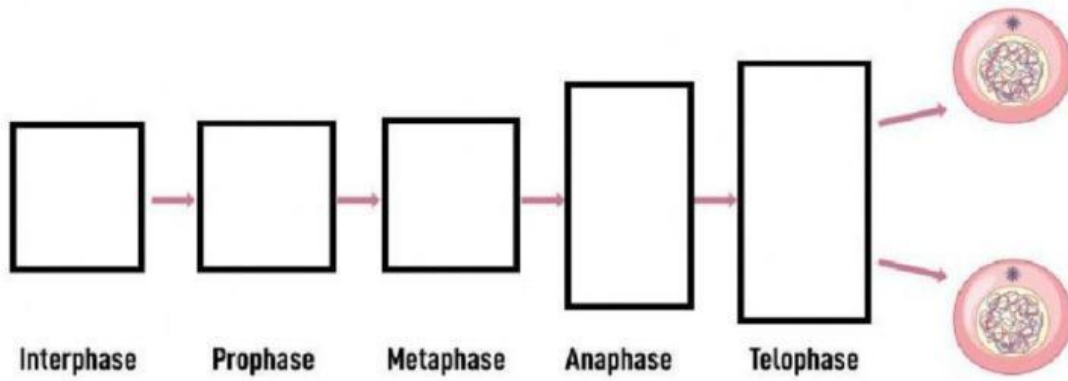
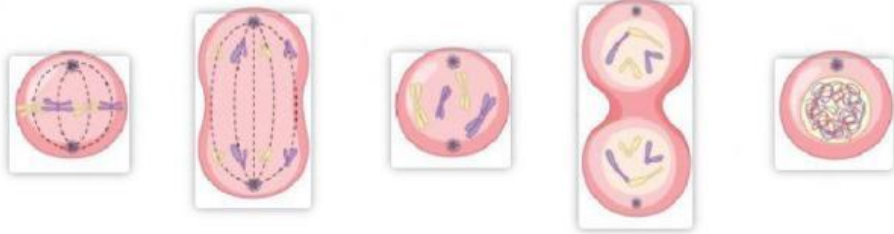


6. Drag these pictures to the correct location in the following diagram:



**Matching:** Match the term to the description.

A. Interphase      B. Prophase      C. Metaphase      D. Anaphase      E. Telophase

- \_\_\_\_ 1. The sister chromatids are moving apart.
- \_\_\_\_ 2. The nucleus begins to fade from view.
- \_\_\_\_ 3. A new nuclear membrane is forming
- \_\_\_\_ 4. The cell membrane begins to pinch in.
- \_\_\_\_ 5. The chromosomes decondense.
- \_\_\_\_ 6. The chromosomes are located at the equator.
- \_\_\_\_ 7. The nuclear membrane begins to fade from view.
- \_\_\_\_ 8. The chromosomes move towards the poles of the cell.
- \_\_\_\_ 9. Sister chromatids line up along the equator.
- \_\_\_\_ 10. The division of cell membrane appears
- \_\_\_\_ 11. The spindle is formed.
- \_\_\_\_ 12. Chromosomes are not visible.
- \_\_\_\_ 13. Chromosomes are replicated.
- \_\_\_\_ 14. The reverse of prophase.