



**REACH INTERNATIONAL SCHOOL**  
**PRIMARY SCHOOL DEPARTMENT**  
 S.Y. 2025 - 2026  
**FOURTH QUARTER**  
**SCIENCE**

<hr/> <p><b>score</b></p>
---------------------------

Name: \_\_\_\_\_

Date: \_\_\_\_\_ Level: \_\_\_\_\_

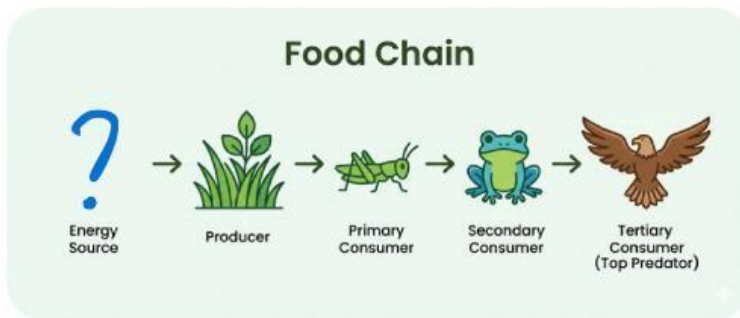
**PART I: Foundational Understanding**

**A. Directions:** Circle the correct answer.

Prompt:



1. Where does the energy in a food chain mainly come from?

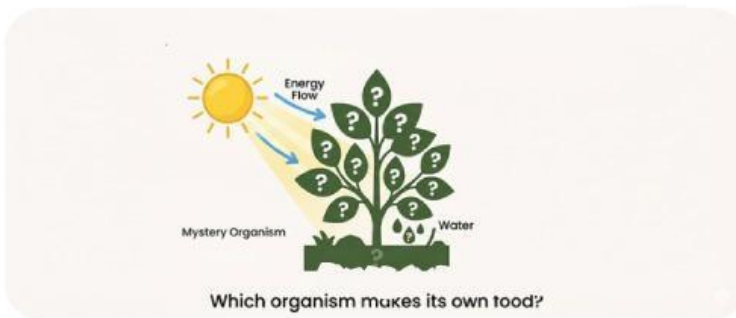


- a. Water
- b. Soil
- c. The Sun

Prompt:



2. Which organism makes its own food?

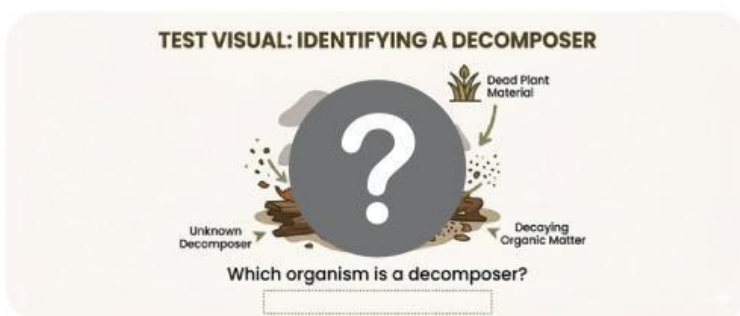


- a. Producer
- b. Consumer
- c. Predator

Prompt:



3. Which of the following is a decomposer?



- a. Bird
- b. Fungus (Mushroom)
- c. Fish

**B. Directions:** Answer in complete sentences.

Prompt:



4. What do carnivores eat?

---

---

---

---

---

Prompt:



5. Give one example of a producer.

---

---

---

---

---

**PART II: Classification**

**C. Directions:** Classify each organism. Write Producer, Herbivore, Carnivore, or Decomposer on the line.

Prompt:



6. Algae

---

---

---

---

---

Prompt:



7. Small fish

---

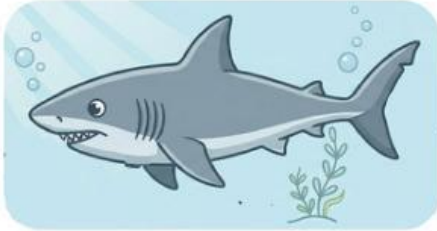
---

---

---

---

Prompt:



8.Shark

Prompt:



9.Mushroom

D. Directions: Answer the question.

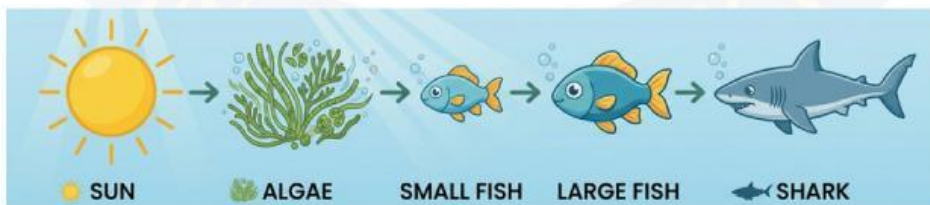
Prompt:

10. Why are decomposers important in an ecosystem?

Handwriting lines for the answer to question 10.

PART III: Food Chain Analysis

E. Directions: Study the marine food chain below and answer the questions.



Prompt:

11. What is the **producer** in this food chain?

Handwriting lines for the answer to question 11.

Prompt:



12. What is the **primary consumer** (the first animal to eat)?

---

---

---

Prompt:



13. What is the **top predator**?

---

---

---

**F. Directions:** Read the cause and write the effect.

Prompt:



14. If the small fish decrease, what happens to the large fish?

---

---

---

---

---

Prompt:



15. If the algae increase, what happens to the small fish?

---

---

---

---

---

#### **PART IV:** Food Web & Ecosystems

**G. Directions:** Circle the correct answer.

Prompt:



16. A food web shows:

- a. Only plants
- b. Only one food chain
- c. Many connected food chains

Prompt:



17. Interdependence in an ecosystem means:
- a. Living things depend on each other to survive
  - b. Animals live alone and do not need others
  - c. Plants do not need animals

H. Directions: Read the scenario and answer the questions (Higher-Order Thinking).

Prompt:



18. If sharks disappear from the ocean, what will MOST likely happen to the large fish?

---

---

---

---

---

---

---

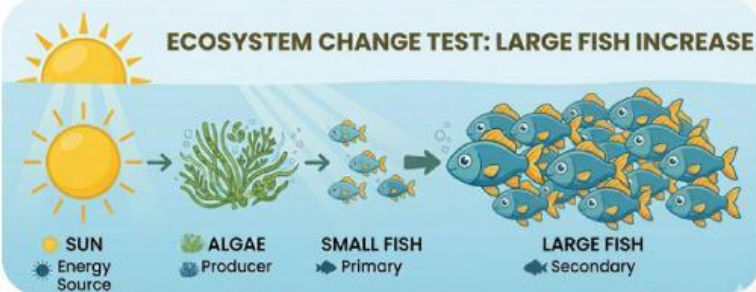
---



Prompt:



19. If the large fish increase too much, what happens to the small fish?




---

---

---

---

---

---

---

---

Prompt:



20. **Multi-Step Thinking:** If pollution kills all the algae, what will MOST likely happen to the whole food chain?

---

---

---

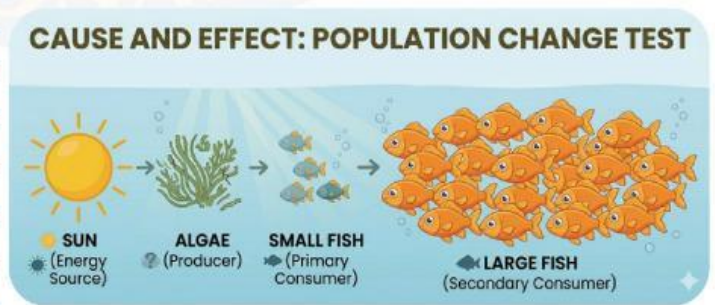
---

---

---

---

---

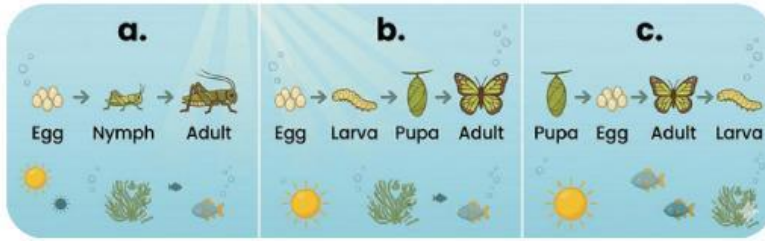


**PART V: Life Cycles**

**I. Directions:** Circle the correct answer.

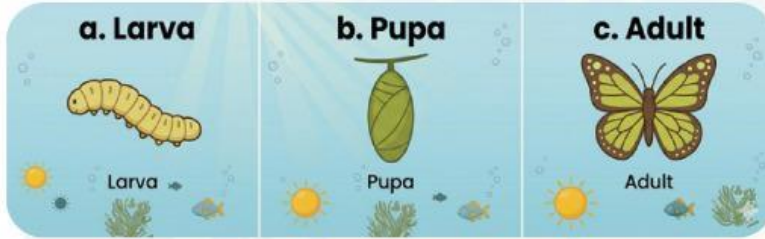
Prompt:

21. Which order shows **complete metamorphosis**?



Prompt:

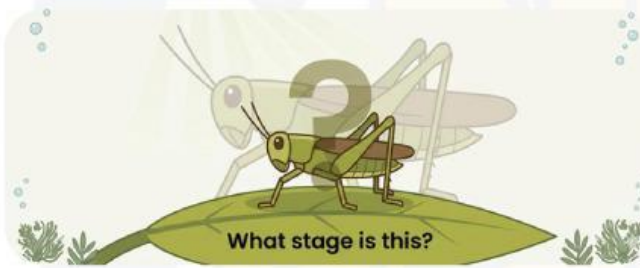
22. Which stage of complete metamorphosis is the "resting" stage (like a cocoon)?



**J. Directions:** Identify the vocabulary word.

Prompt:

23. A young insect that looks exactly like a small adult is called a:



---

---

---

---

---

**K. Directions:** Identify the vocabulary word.

Prompt:

24. Why do frogs live in the water first (as tadpoles) and then on land?

---

---

---

---

---

Prompt:

25. **Higher Thinking:** Why is it helpful for an ecosystem that baby insects (larvae) and adult insects eat different types of food?

---

---

---

---

---

**Job well done**