

# CIRCULATORY SYSTEM

1. Label the picture with the words above.

heart

artery

capillary

vein



2. Join the word with the correct sentence.

Platelets

carry oxygen from the lungs to all the body cells.

White blood cells

transports nutrients and waste products around the body.

Plasma

are fragments of old cells. They repair vessels and help to stop bleeding.

Red blood cells

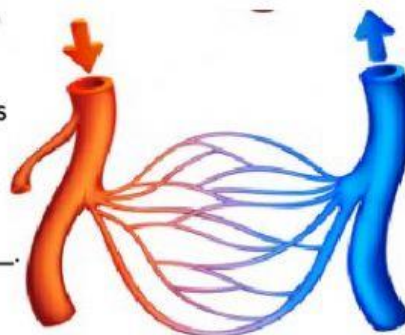
protect us from germs.

3. Fill in the gaps of the three next paragraphs.

\_\_\_\_\_ are blood vessels

that \_\_\_\_\_ blood away from the

\_\_\_\_\_ towards all body \_\_\_\_\_.



\_\_\_\_\_ are \_\_\_\_\_

That transport blood \_\_\_\_\_ to the

\_\_\_\_\_ from all body \_\_\_\_\_.

\_\_\_\_\_ are blood vessels with very \_\_\_\_\_ walls.

These walls allow \_\_\_\_\_ and \_\_\_\_\_ to pass into the \_\_\_\_\_.

They also allow \_\_\_\_\_ and other \_\_\_\_\_ products to leave the \_\_\_\_\_.