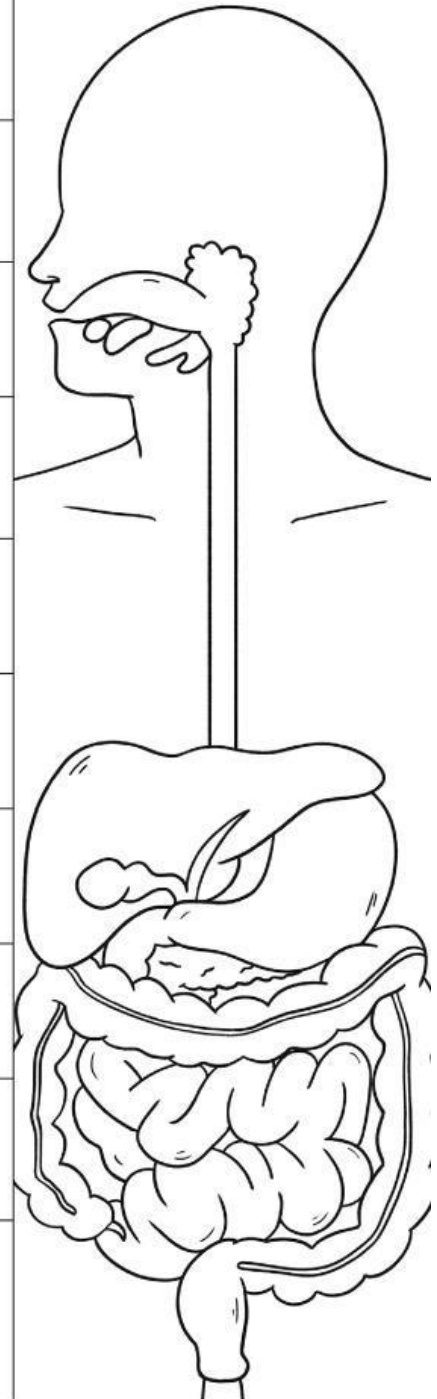


# Digestive System

**Directions:** Match each description to its answer by writing the corresponding letter on the line.

1. _____ small intestine	A. carries food and liquid from the mouth to the stomach
2. _____ gall bladder	B. the involuntary muscle contractions that move food through your gastrointestinal tract
3. _____ stomach	C. the opening at the far end of the digestive tract where stool leaves the body
4. _____ appendix	D. takes in food from the esophagus, breaks it down, and passes it on to the small intestine in small portions
5. _____ esophagus	E. receives waste from the colon and stores it until it is ready to pass out of the anus
6. _____ anus	F. absorbs water and vitamins and changes the waste from liquid into stool
7. _____ peristalsis	G. stores bile
8. _____ rectum	H. acts as a safe house for good gut bacteria
9. _____ pharynx	I. is made up of the duodenum, jejunum, and ileum and helps further digest the food coming from the stomach
10. _____ large intestine	J. the muscular tube that acts as a passageway for air to enter the larynx and lungs and food and liquid to enter the esophagus



visit [twinkl.com](https://www.twinkl.com)



[Click Here for Support With Using Digital Resources](#)

**LIVEWORKSHEETS**