

<b>TEST 1 – UNIT 1</b>	<b>AREA/SUB.:</b> Natural Science	<b>TEACHER:</b>	
		Lic. María Victoria Gualoto. Lic. Stefy Proaño	
<b>Name:</b>		<b>Level:</b> 4 <sup>th</sup> EGB	<b>Date:</b> October 15th, 2025

**1.- Look at the picture and write the parts of the plant and its functions**

2

Flower: Produces \_\_\_\_\_ and attracts \_\_\_\_\_.

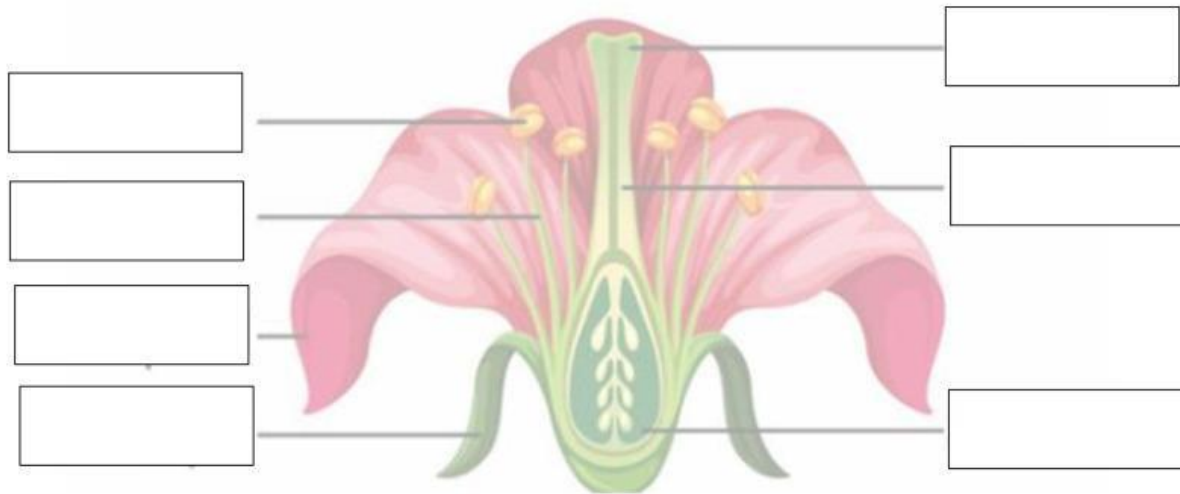
Leaves: Produce \_\_\_\_\_ for the plant through \_\_\_\_\_. Allows exchange of \_\_\_\_\_ and evaporation of \_\_\_\_\_.

Fruit: protects the \_\_\_\_\_. Feeds \_\_\_\_\_ and \_\_\_\_\_.

Stem: Holds the \_\_\_\_\_ and transport \_\_\_\_\_, \_\_\_\_\_ and \_\_\_\_\_ to all the parts of the plant.

Roots: absorbs \_\_\_\_\_, \_\_\_\_\_ and \_\_\_\_\_ from the \_\_\_\_\_.

2.- Look at the picture and write the parts of the flower \_\_\_\_\_ 2



3.- What are the FEMALE parts of the flower ? Write their names \_\_\_\_\_ 1

1. \_\_\_\_\_

2. \_\_\_\_\_

3. \_\_\_\_\_

4.- What are the MALE parts of the flower ? Write their names \_\_\_\_\_ 1

1. \_\_\_\_\_

2. \_\_\_\_\_

4.- What is pollination? Complete the definition below \_\_\_\_\_ 1

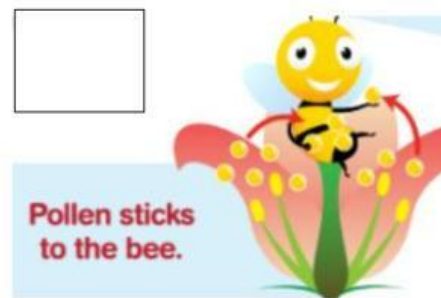
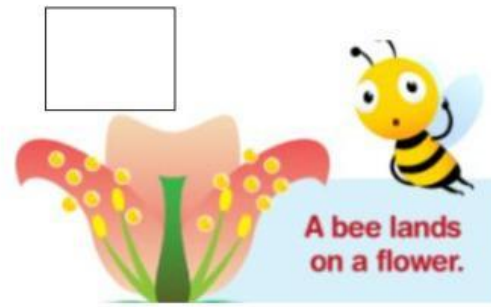
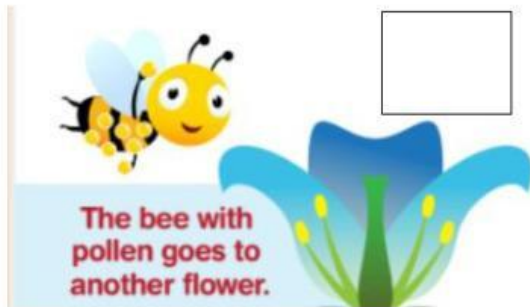
Pollination is the \_\_\_\_\_ of \_\_\_\_\_ from the \_\_\_\_\_  
to the \_\_\_\_\_. This process create new seeds.

5.- Why is pollination important? Complete the answer below \_\_\_\_\_ 1

It is important because it helps \_\_\_\_\_ to \_\_\_\_\_.

6.- Number in the correct order the process of pollination \_\_\_\_\_ 1

**Pollination process:**



7.- Write examples of common pollinators \_\_\_\_\_ 1

1. \_\_\_\_\_

2. \_\_\_\_\_

3. \_\_\_\_\_

4. \_\_\_\_\_

