

OXFORD SIMULATOR 1

Listening part 1: Choosing the best picture

Instructions. For each question, choose the correct answer.

1 What is the woman talking about?



A ☐



B ☐

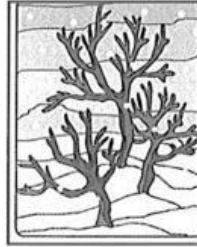


C ☐

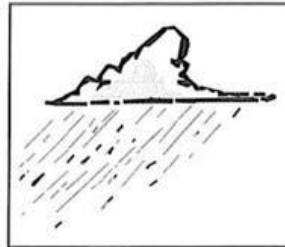
2 What is the current weather?



A ☐



B ☐



C ☐

3 Where are they?



A ☐



B ☐



C ☐

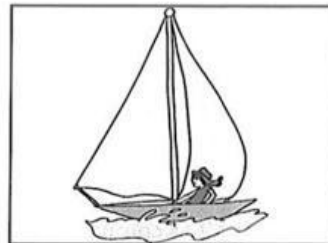
4 What is the woman going to do on Sunday?



A ☐



B ☐



C ☐

5 What are the people talking about?



A

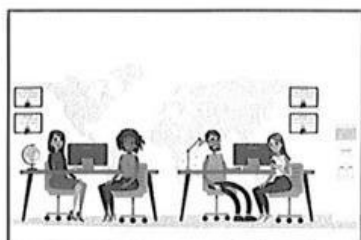


B

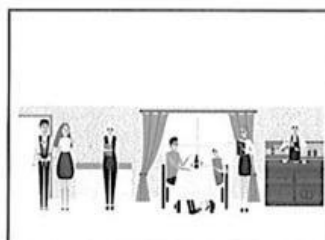


C

6 Where do the people work?



A



B



C

7 At which time is the plumber available?

3 o'clock

A

12 o'clock

B

5.30

C

Listening part 2: Listening for details and main ideas (visual lectures)

Instructions. Choose the best answer for multiple choice questions.

Talk one

1. What is the main purpose of this lecture?

- (A) The life of Louis Tiffany.
- (B) The work of Louis Tiffany.
- (C) The Art Nouveau movement.
- (D) *Favrile* glass art objects.

2. What characterized Tiffany's jewelry?

- (A) Iridescent glass.
- (B) Precious stones.
- (C) Traditional styles.
- (D) Floral designs.

3. How did Tiffany help aspiring artists?

- (A) He was a teacher.
- (B) He founded a school.
- (C) He provided scholarships.
- (D) He sold their work in his shop.

4. For which interior design was Tiffany NOT commissioned?

- (A) A glass curtain at the National Theater in Mexico.
- (B) The altar in the Cathedral of Saint John the Divine.
- (C) The reception rooms in the White House.
- (D) Exclusive stores on Fifth Avenue in Manhattan.

5. Select the example of a Tiffany *favrile* design. Choose the letter of the drawing that was described in the lecture.



Talk two

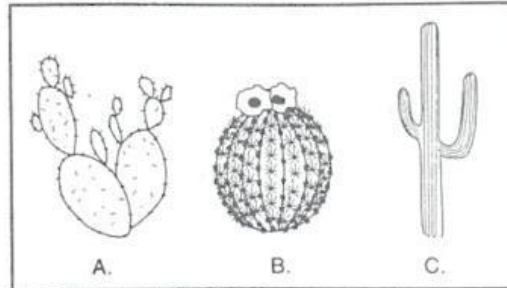
Instructions. For each question, choose the correct answer.

1. What is the lecture mainly about?
☐ A The structure of the cactus.
☐ B Extreme climates.
☐ C Water storage in cactus plants.
☐ D The nutritive functions of leaves.
2. What is assumed about cactus plants millions of years ago?
☐ A They were probably much larger.
☐ B They probably had leaves like other plants.
☐ C They probably grew underground.
☐ D They probably had fruit as well as flowers.
3. According to the lecturer, why have cacti developed spines and needles?
☐ A They grew closer to the surface.
☐ B They could absorb water more quickly.
☐ C They protected the plant from animals.
☐ D They supported beautiful blossoms.
4. Where is the nutritive function of the cactus carried out?
☐ A Leaves.
☐ B Blossoms.
☐ C Stems.
☐ D Roots.

5. Select the Saguaro cactus from among the choices pictured.

Choose the letter of the drawing that was described in the lecture.

- ☐ A
☐ B
☐ C



Listening part 3: Choosing the speaker

Instructions. In this part, you will hear five speakers. Each speaker talks about a related topic. Read the questions carefully before you listen. You can listen to the audio twice. Click on the 'See script' button to review your answers.

You'll hear five different people talking about computer games. For questions 1-5, choose from the list of their views on computer games. Use each option only once. There is one extra option which you do not need to use.

- ☐ Speaker 1 _____
- ☐ Speaker 2 _____
- ☐ Speaker 3 _____
- ☐ Speaker 4 _____
- ☐ Speaker 5 _____