



FIRST

Accumulative quizzes on Algebra

Quiz

1

on lesson 1 – unit 1

Total mark

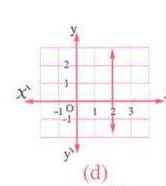
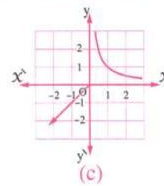
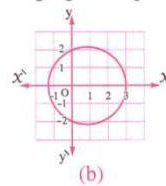
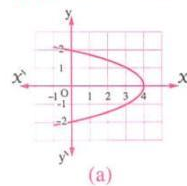
10

Answer the following questions :

First question 4 marks

1 mark for each item

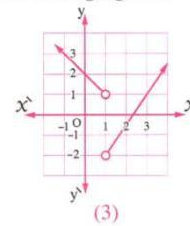
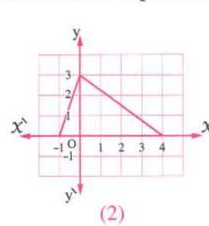
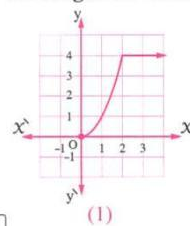
Choose the correct answer from those given :

(1) Which of the following figures represents a function in X ?(2) The opposite figure represents a function in X whose domain is(a) \mathbb{R} (b) $\mathbb{R} -]-2, 2[$ (c) $\mathbb{R} - [-2, 2]$ (d) $\mathbb{R} - \{0\}$ (3) The opposite figure represents a function in X whose range is(a) $\mathbb{R} - [0, 2]$ (b) $\mathbb{R} - \{0\}$ (c) $\mathbb{R} - [0, 2[$ (d) $\mathbb{R} -]0, 2]$ (4) If $f(X) = \sqrt{4 - X^2}$, then the domain of the function $f =$ (a) $[-2, 2]$ (b) $] -2, 2[$ (c) $[-2, 2[$ (d) $] -2, 2]$

Second question 6 marks

2 marks for each item

Investigate the monotony of the functions represented by the following figures :



6

Algebra

Quiz

2

till lesson 2 – unit 1

Total mark

10

Answer the following questions :

