

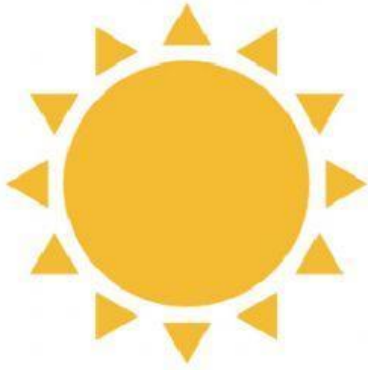
Welcome to

Jolly Phonics

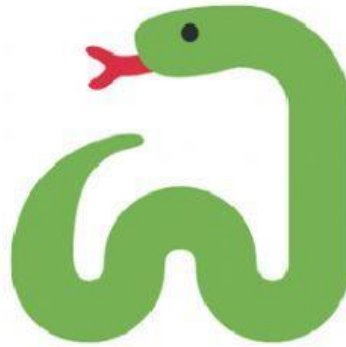


Jolly
Phonics

What's the initial letter?



7

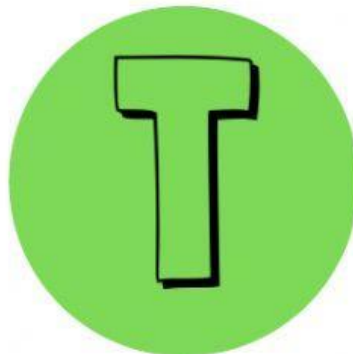
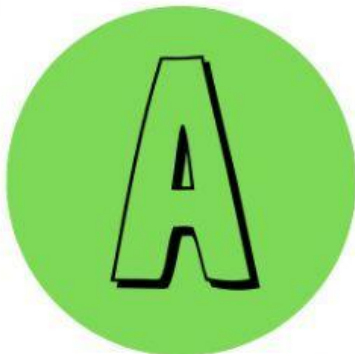
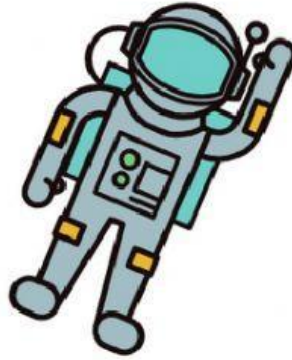
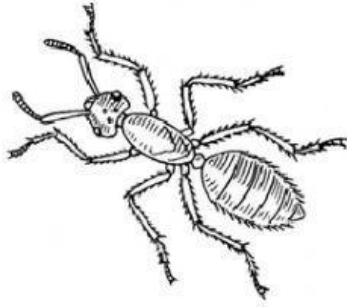


N

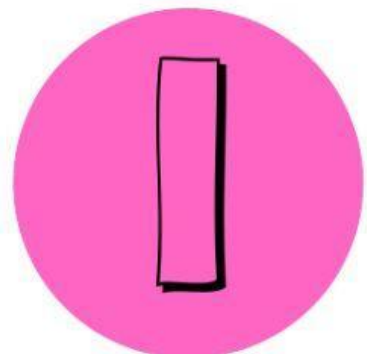
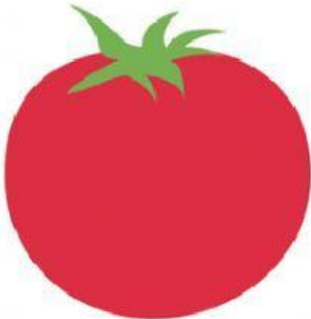
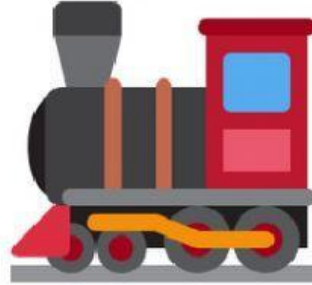
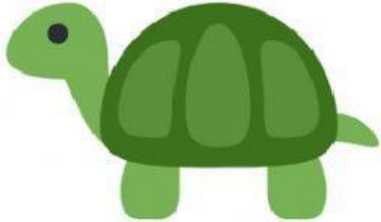
S

P

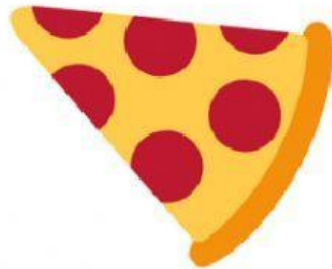
What's the initial letter?



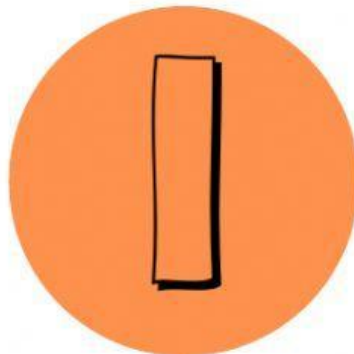
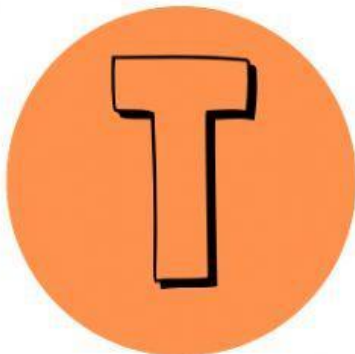
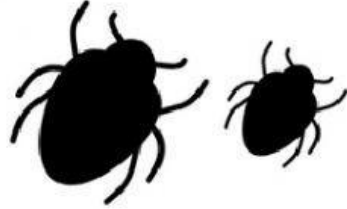
What's the initial letter?



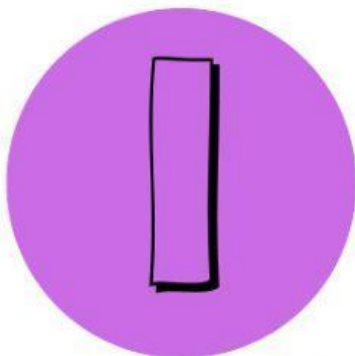
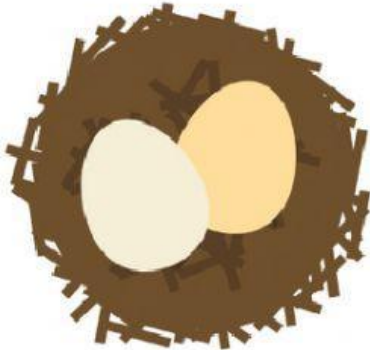
What's the initial letter?



What's the initial letter?

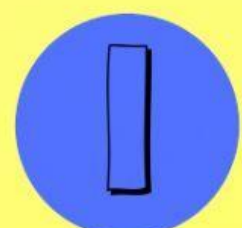
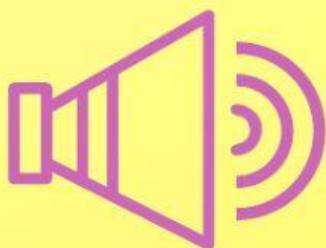
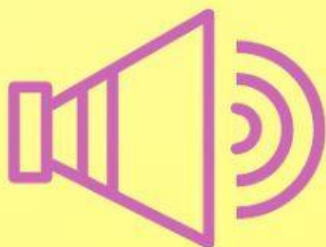
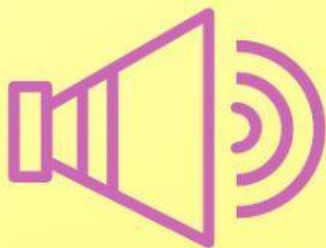
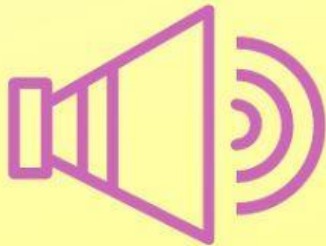
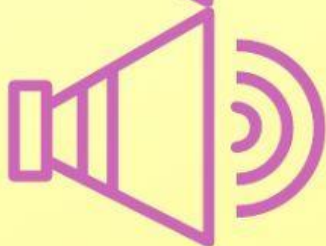
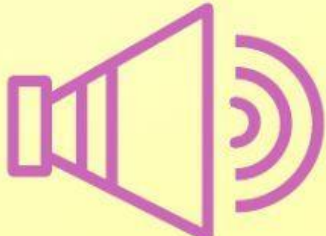


What's the initial letter?



LISTEN AND MATCH

ESCUCHA Y UNE LA LETRA CORRESPONDIENTE



WHAT'S THE INITIAL SOUND?

CLICA SOBRE LA LETRA CON LA QUE EMPIEZA LA PALABRA



P

A

T



T

I

S



S

N

P



P

S

N