

# FINAL TEST 1. Listening

## SECTION 1 Questions 1-10

### Questions 1-3

Complete the form below.

Write **NO MORE THAN TWO WORDS AND/OR A NUMBER** for each answer.

Cianfanelli Property Loss/Damage Report Form	
Example Name	Answer ....Cirilla Fionna....
Phone number	1. ....
Address	2. ...., Toussaint
Shipping company	EA Merchant Marine
Date of arrival	3. ....
Shipment code	GTX-1060

### Questions 4-10

Complete the table below.

Write **NO MORE THAN TWO WORDS AND/OR A NUMBER** for each answer.

Items	Problems	Estimated cost
4. ....	a lot of 5. .... are missing	\$40
Violin	a huge crack on the body the 6. .... is detached	no less than 7. ....
8. ....	broken 9. ....	\$30
Electric pressure cooker	the 10. .... needs replacing	unknown

## SECTION 2 Questions 11-20

### Questions 11-15

Complete the notes below.

Write **NO MORE THAN TWO WORDS** for each answer.

#### KINNEY HOTEL

Located in the town centre, near the **11**. .....

Rated 4-star by a **12**. .....

The most luxurious and expensive room in the hotel is the **13**. .....

Has a restaurant specialising in Norwegian **14**. .... on ground floor

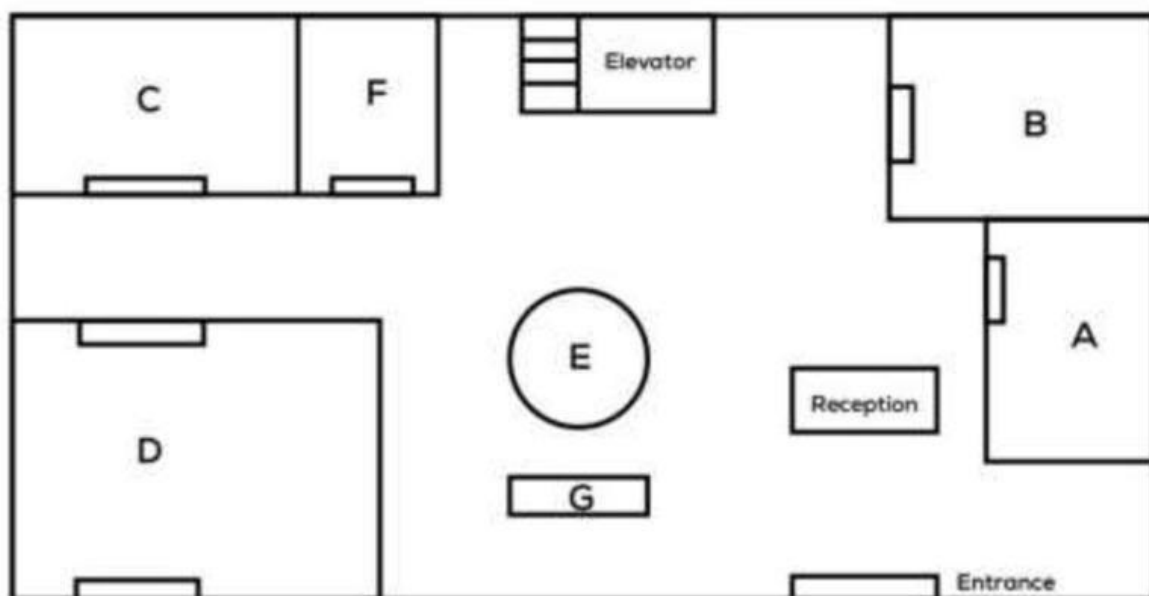
Has a special **15**. .... on the 15<sup>th</sup> floor

### Questions 16 - 20

Label the plan below.

Write the correct letter **A - G**, next to Questions 16 - 20.

#### GROUND FLOOR OF KINNEY HOTEL



16. Art gallery .....

17. Fountain .....

18. Restaurant .....

19. Bakery .....

20. Bar .....

## SECTION 3 Questions 21-30

### Questions 21-26

Complete the notes below.

Write **NO MORE THAN TWO WORDS AND/OR A NUMBER** for each answer.

### THE LIFE AND WORK OF LOUIS BRAILLE

#### Childhood

- Louis Braille (1809 – 1852) was born in a family which ran a successful leather making business.
- At the age of 3, Louis Braille accidentally poked his eye in his father's workbench and lost his vision due to **21**.

#### Early education

- Local teachers were very impressed by Louis' **22** and intelligence.
- In 1819, Braille attended the Royal Institute for Blind Youth.

#### Major limitations of Valentin Haüy's system

- The handcrafted books were **23** and
- The method itself did not help children learn how to write.

#### Charles Barbier's system

- Was expected to be used as a means for **24** to communicate silently at night without a light source.
- Used thirty-six **25** that represented sounds rather than individual alphabet letters.

#### Louis Braille's system

- Has 63 possible **26** of dots.
- Users write by punching dots into paper from right to left.



## Questions 27-30

Write the correct answer, **A-F**, next to Questions 27-30.

What was the most remarkable achievement that each of the following blind scientists had achieved?

- A. invented an automotive feature that improves drivers' safety
- B. developed his own reading method based on the Braille system
- C. had a system similar to Braille's under his name
- D. created a weapon that led to the success of many battles fought by his home country
- E. his invention had a huge impact on ocean exploration
- F. discovered production and shipping methods that served military purposes

27. Dr. James Gale .....

28. William Moon .....

29. Ralph Teetor .....

30. Mohannad Abudayyah .....

## SECTION 4 Questions 31-40

Complete the note below.

Write **ONE WORD ONLY** for each answer.

### 3 UNSOLVED MYSTERIES THAT CONFOUNDED THE ART WORLD

Artwork	Facts
The In-The-Garden painting	<ul style="list-style-type: none"><li>• The painting was concealed under another painting.</li><li>• The hidden painting was a portrait of a young lady who was reading and enjoying her afternoon <b>31</b> .....</li><li>• The artist was thought to be a <b>32</b> ..... before the Depression.</li><li>• It was speculated that making the second painting over the first one was how the artist managed to <b>33</b> ..... or store his paintings.</li></ul>
Christ of Patience statue	<ul style="list-style-type: none"><li>• The statue was found to have real human teeth.</li><li>• It was supposed that certain human parts had been donated according to a <b>34</b> ..... tradition.</li><li>• The human teeth from the statue were revealed by <b>35</b> .....</li><li>• More interestingly, the teeth are not <b>36</b> ..... until people look at the inside part on purpose.</li><li>• Researchers are on an attempt to identify the donor's age and <b>37</b> .....</li></ul>
Mona Lisa-the other ones	<ul style="list-style-type: none"><li>• The second Mona Lisa painting was made with a difference in <b>38</b> ..... compared to the original one.</li><li>• The third Mona Lisa (Isleworth Mona Lisa) had been painted around 100 years prior to the other two.</li><li>• With different material used for the painting, it is still a question regarding whether Da Vinci wanted to employ a new <b>39</b> ..... or it was the work of another creator.</li><li>• The two paintings have sparked ongoing <b>40</b> ..... among experts.</li></ul>