

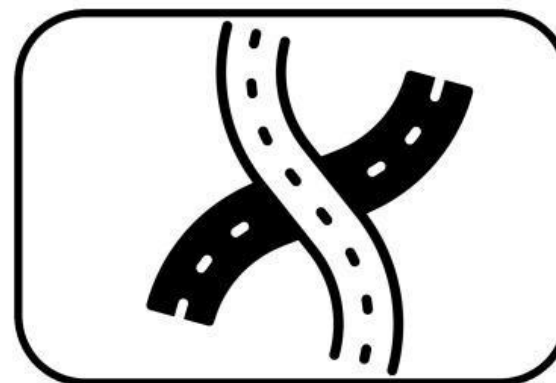
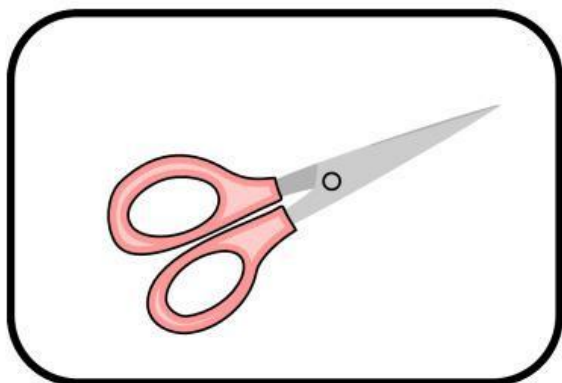
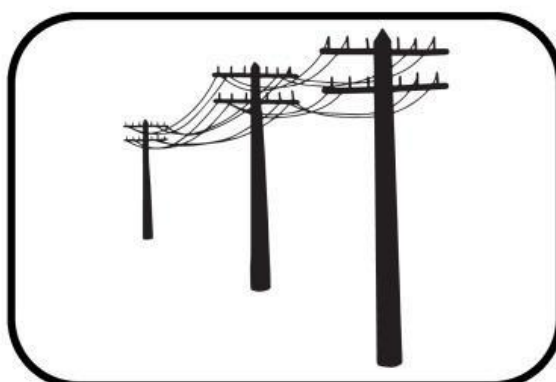
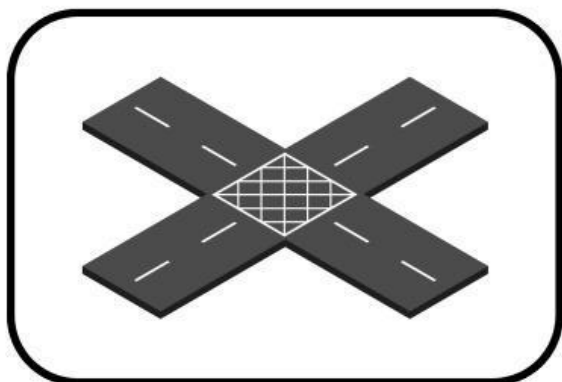
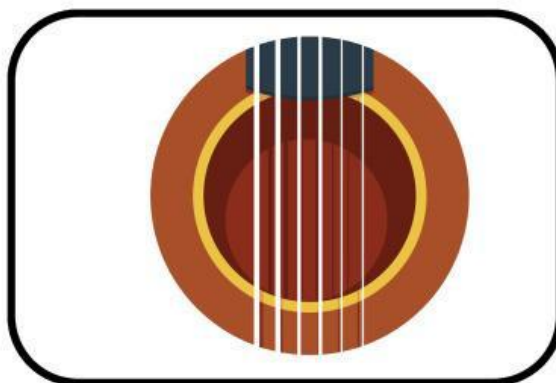
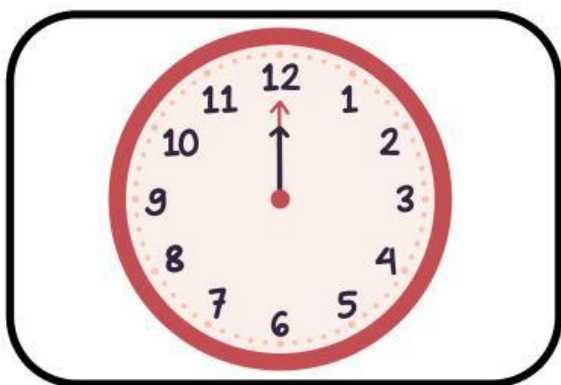
Nama Anggota Kelompok :

Kelas : \_\_\_\_\_

• \_\_\_\_\_ : \_\_\_\_\_ : \_\_\_\_\_  
• \_\_\_\_\_ : \_\_\_\_\_ : \_\_\_\_\_

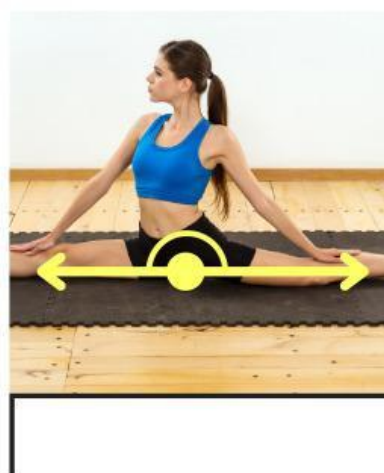
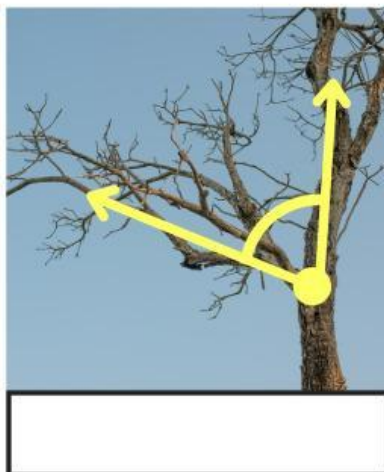
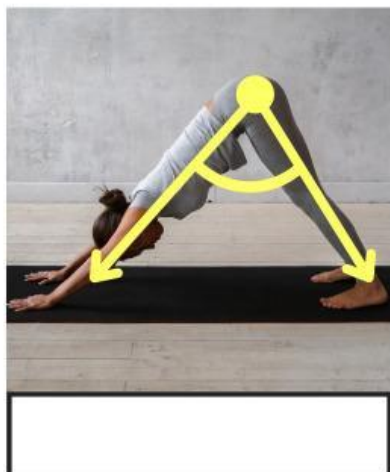
## JENIS-JENIS GARIS

Tuliskan gambar mana yang menunjukkan garis sejajar, garis yang berpotongan, garis tegak lurus dan garis yang berimpit

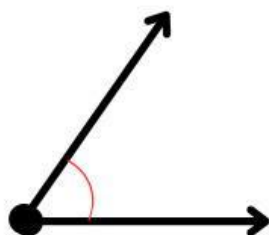


# Jenis Sudut

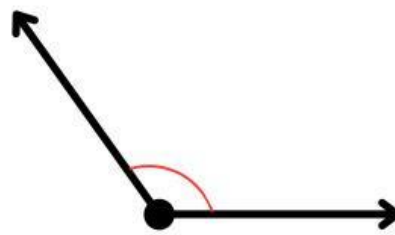
Tulis adapah gambar yang ditunjukan sudut lancip, sudut tumpul , sudut siku-siku atau sudut lurus



1.



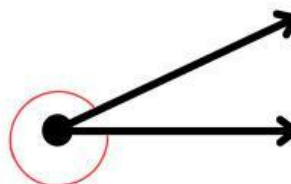
2.



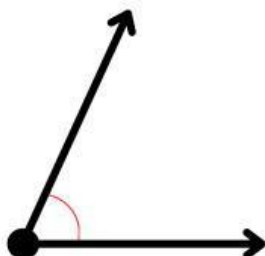
3.



4.



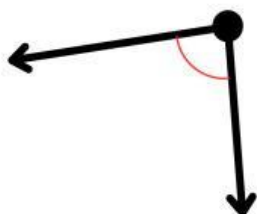
5.



6.



7.



8.

