



Kurikulum
Merdeka



LKPD

Lembar Kerja Peserta Didik

Topik : Analytical Exposition

Kelas :

Kelompok :

Anggota :





Learning Objective

Students are able to analyze the text structure and linguistic features of an Analytical Exposition text correctly

Instructions

- Students are divided into certain groups.
- students discuss with their group
- Read the text carefully
- Check (✓) if the structure and the characteristics are in the text, or mark (✗) if they are not.
- Fill in the description column with examples found in the text





The Adverse Impact of ChatGPT on Educational Growth

ChatGPT has undoubtedly transformed education, but its misuse can hinder students' intellectual and ethical development.

First, ChatGPT undermines critical thinking and creativity. When students rely on ChatGPT to generate answers, they bypass the cognitive processes involved in analyzing problems, forming arguments, and creating original solutions. For example, students might use ChatGPT to compose essays or generate project ideas instead of brainstorming and refining their own concepts. This reliance stunts their ability to think independently and creatively.

Second, ChatGPT facilitates academic dishonesty. With its capacity to generate comprehensive answers, essays, and solutions, it becomes tempting for students to use it for dishonest purposes. For instance, a student could submit a ChatGPT-generated essay as their own, which not only violates academic integrity but also diminishes their personal learning experience. Such practices may lead to a decline in the overall quality of education.

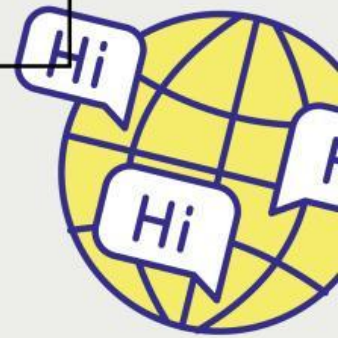
Third, overdependence on ChatGPT can result in a lack of adaptability. In real-world scenarios where ChatGPT is unavailable, students who heavily rely on the tool may find themselves unable to tackle challenges independently. This technological dependency raises concerns about their preparedness for academic and professional environments that require initiative and resilience.

In conclusion, while ChatGPT offers immense potential for improving education, its overuse and misuse can lead to significant drawbacks, such as reduced critical thinking, compromised academic honesty, and unhealthy dependency. To address these challenges, educators and students must approach ChatGPT as a supplementary resource, using it ethically and judiciously to ensure meaningful and authentic learning experiences.



Checklist for identifying generic structure of a text

No	Generic Structure	✓	✗	Paragraph
1	Thesis			
2,	Arguments			
3.	Conclusion			





Checklist for identifying language feature of a text

No	Language feature	✓	✗	Example
1	Simple Present Tense			
2,	Connectives and Conjunction			
3.	Emotive Word			

