

VIDEO GAMES

PRACTICE

PLAY

1 Vocabulary and Definitions (Matching)

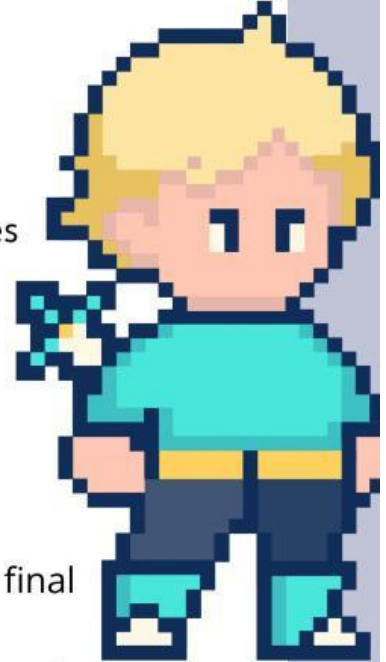
Instructions: Match the words on the left with their correct definitions on the right

- | | |
|-------------|--|
| 1. Respawn | A) non-playable character controlled by the game's artificial intelligence |
| 2. NPC | b) Rewards or items collected in the game |
| 3. Loot | c) The fictional world where the game takes places |
| 4. Cutscene | d) A scripted sequence in a game, often used to tell a story |

2 Fill in the Blanks:

Complete the sentences with the correct words from the box.

1. Players must develop a clear _____ to defeat the final boss.
2. After losing the match, the character had to _____ at the starting point.
3. In the _____ mode, gamers from around the world can join the same game.
4. The knight's _____ to rescue the princess is the central theme of the story.
5. I customized my _____ to look like a futuristic robot.



Quest

Strategy

Respawn

Multiplayer

Avatar



VIDEO GAMES

PRACTICE



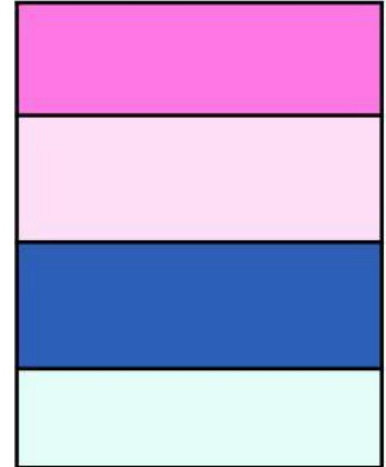
3 Drag the correct game to its corresponding genre.

☐ Role-Playing Game (RPG)

☐ First-Person Shooter

☐ Simulation 

☐ Multiplayer Online Battle Arena (MOBA)



The Witcher 3	Call of Duty	Stardew Valley	Overwatch
------------------	--------------	-------------------	-----------

4

Answer the questions , use the video to find the answer:

- Which game is considered one of the first digital computer games?
A) Pong
B) Spacewar!
C) Tetris
D) Super Mario Bros.
- Which console revitalized the video game industry in 1983?
A) Sega Genesis
B) PlayStation
C) Nintendo Entertainment System (NES)
D) Xbox
- Which game demonstrated the potential of virtual reality in 2020?
A) Minecraft
B) Angry Birds
C) Half-Life: Alyx
D) Halo

GAME
OVER