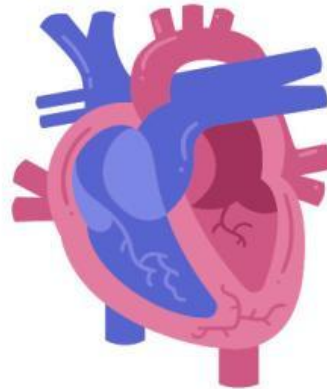
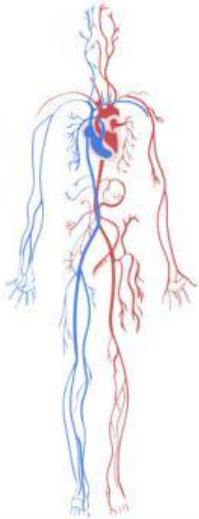


CIRCULATORY SYSTEM

LABEL THE PARTS



COMPLETE

The **circulatory system** transports _____ and _____ to our _____, _____, and _____.

The **heart** is the _____ of our body. It has got 2 parts called _____ part and _____ part.

It has got 2 _____. the upper **chambers** are called _____ and the lower chambers are called _____.

The **arteries** carries blood with _____ and _____.

the **veins** carries _____ blood with _____.

COOPERATIVE WORK

1. LISTEN TO THE PODCAST
2. TRY TO FOLLOW THE BLOOD'S JOURNEY IN THE PICTURE OF THE PAGE 15
3. THINK WITH YOUR TEAM THE ORDER OF THE EXERCISE 7
4. NOW WRITE IT IN ORDER IN SILENT
5. CHECK YOUR ANSWER
6. DRAW THE GRAPHIC